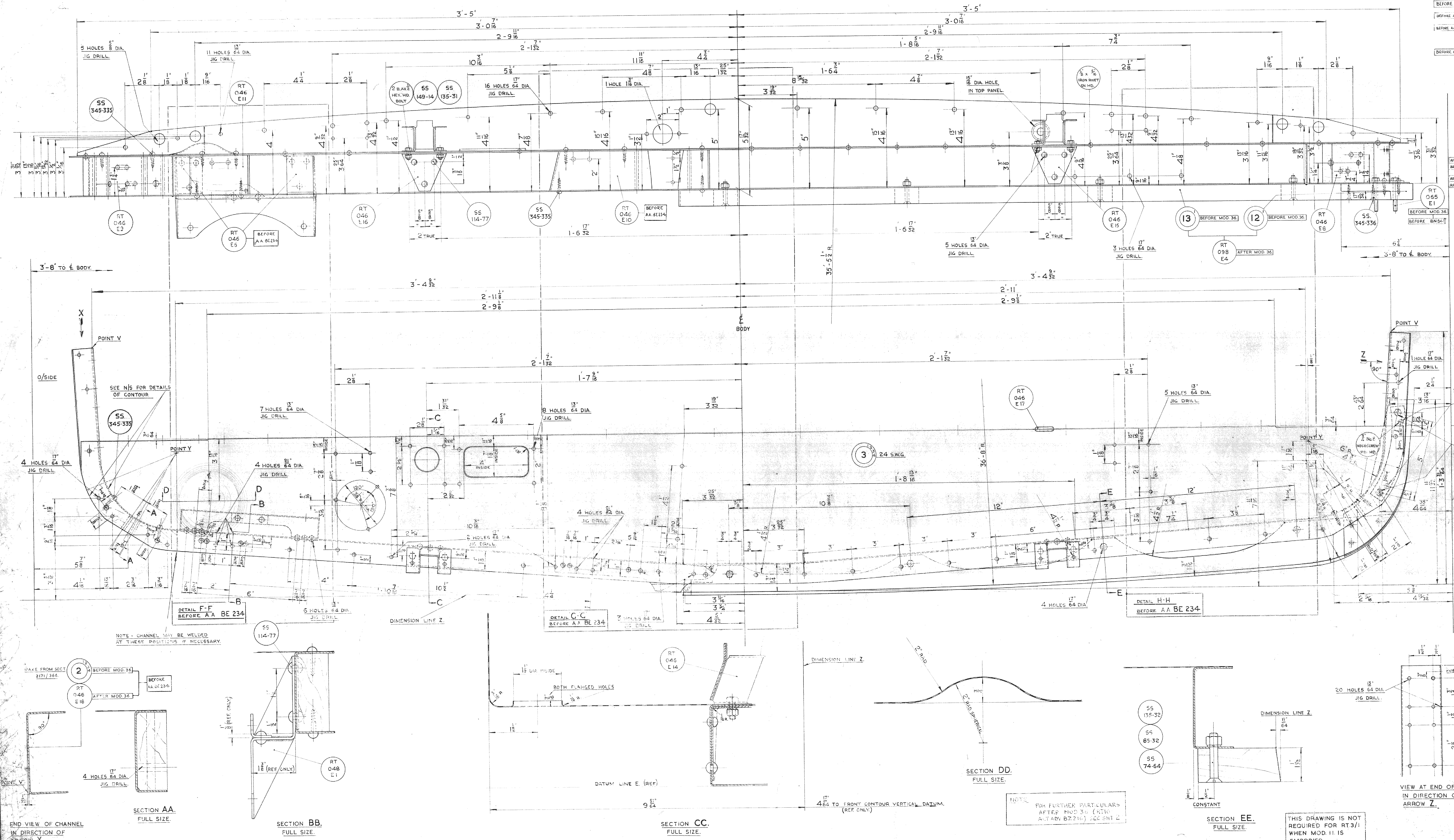




DRAWING NOT TO BE SCALED

[illegible]

* SEE SEPARATE DRAWING.

IN PLAN VIEW $\frac{1}{8}$ " DIA. PIVETS SHOWN THUS  DRILL $\frac{9}{64}$ " DIA.

$\frac{3}{16}$ " $\frac{13}{16}$ "

 DRILL $\frac{13}{64}$ " DIA.

11" DRILL $\frac{5}{16}$ " DIA. WHERE WOODSCREW ARE INDICATED.

NOTE
FOR DETAILS F-F, C-C & H-H
AFTER AA BE 234 SEE SHEET 3.

RT.3		RY.05 EL					
TYPE	ASS'D. ON	TYPE	ASS'D. ON	TYPE	ASS'D. ON	TYPE	ASS'D. ON
ISSUE NO.	10	H	12	G			
MOOD NO.	15	10	56216	BE 234			
DATE	2-3-53	10/10/54	10-10-50	10-10-50			
DRAWN	1	2	3	4	5	6	7
CHECKED	1	2	3	4	5	6	7
PROVED	1	2	3	4	5	6	7
BLUE NO.	1	2	3	4	5	6	7
MOOD NO.	1	2	3	4	5	6	7
DATE	1	2	3	4	5	6	7
DRAWN	1	2	3	4	5	6	7
CHECKED	1	2	3	4	5	6	7
PROVED	1	2	3	4	5	6	7

DEPARTMENT OF THE CHIEF MECHANICAL ENGINEER (ROAD SERVICES)
 1 CHISWICK WORKS, LONDON, W.4

THIS DRAWING IS NOT
REQUIRED FOR RT3/1
WHEN MOD. II IS
EMBODIED.

PROCESS SPECIFICATION	TITLE	PART No.
DETAIL METAL PARTS PT6A BEFORE ASSY.	U/S FRONT FRAME	PT 046-EI
TIMBER DETAILS PT.3 BEFORE ASSY.	BOTTOM METAL STRUCTURE	SHT OF 3 SHTS. <small>ALL PARTS MUST BEAR OUR PART NO. IDENTIFIER & RECORD TOOLS INC.</small>

[illegible]