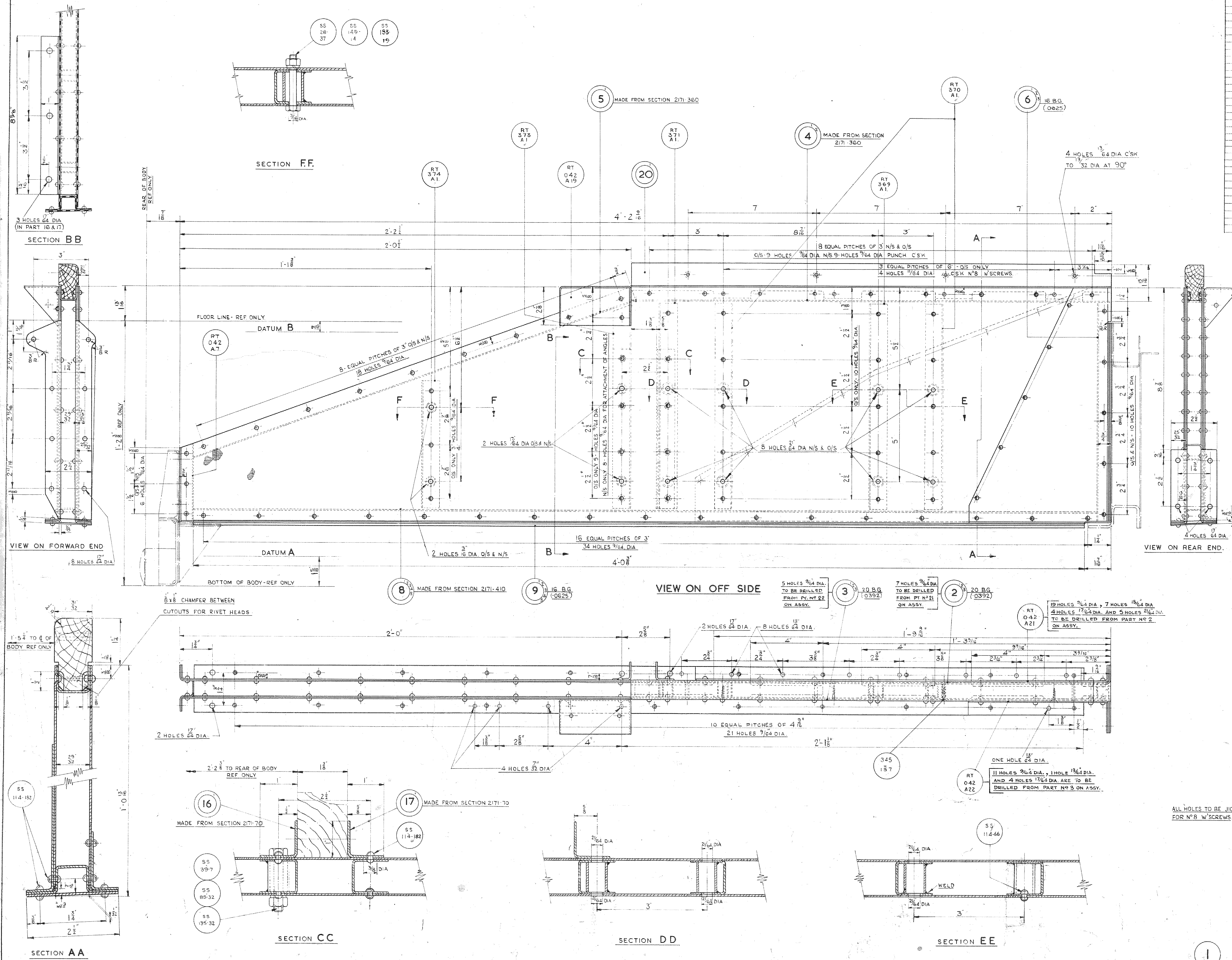


DRAWING NOT TO BE SCALED



MOD NO	7	MACHINED	ALL OVER	MACHINED	GROUND	LIMITS TO NEWALL STANDARDS	DIMENSIONS WITHOUT
AFTER	BEFORE	PART NO	DESCRIPTION	MTL	SPEC	NO PER	ASSY
RT 042 A1	LONGITUDINAL BATTERY RISER ASSY	MS	EN2	1			
RT 042 A2	PANEL N/S	MS	EN2	1			
RT 042 A3	PANEL O/S	MS	EN2	1			
RT 042 A4	CHANNEL - TOP FRONT	MS	EN2	1			
RT 042 A5	CHANNEL - TOP REAR	MS	EN2	1			
RT 042 A6	END MEMBER - FRONT	MS	EN2	1			
RT 042 A7	END MEMBER - REAR	MS	EN2	1			
RT 042 A8	BOTTOM RAIL	MS	EN2	1			
RT 042 A9	BOTTOM PLATE	MS	EN2	1			
RT 369 A1	CHANNEL ASSY - LONG FRONT	MS	EN2	1			
RT 370 A1	CHANNEL ASSY - LONG FRONT	MS	EN2	1			
RT 371 A1	CHANNEL ASSY - LONG REAR	MS	EN2	1			
RT 372 A1	CHANNEL ASSY - INTER	MS	EN2	1			
RT 373 A1	CHANNEL ASSY - SHORT	MS	EN2	1			
RT 042 A10	ANGLE BRACKET	MS	EN2	1			
RT 042 A11	ANGLE BRACKET	MS	EN2	1			
RT 042 A12	SUPPORT BRACKET BATTERY LID FRAME	MS	EN2	1			
RT 042 A13	TOP PACKING	ASH		1			
RT 042 A14	REINFORCING PLATE - N/S	MS		1			
RT 042 A15	REINFORCING PLATE - O/S	MS		1			
SS 28-37	2 BA HEX HD BOLT 1 1/2" LONG	MS		2			
SS 149-14	2 BA HEX NUT	MS		2			
SS 153-19	3/16 GROVER WASHER	SS		2			
SS 39-7	1/4 BSF HEX HD BOLT 1 1/2" LONG	MS		2			
SS 85-32	4 BSF HEX NUT	MS		2			
SS 135-32	4 GROVER WASHER	SS		2			
SS 114-66	1/8 DIA 1/4" LONG SNAP HD RIVET	IRON		AS REQD			
SS 114-182	3/8 DIA 1/4" LONG SNAP HD RIVET	IRON		AS REQD			
345-157	3/4 x 1/8 CSK HEAD WOODSCREW	IRON		AS REQD			

* SEE SEPARATE DRAWING.

NOTE:-
WHEN 2 THICKNESSES OF 16 BG & 1 THICKNESS OF 20 BG OR WHEN 1 THICKNESS OF 16 BG, 1 THICKNESS OF 18 BG & 1 THICKNESS OF 20 BG ARE RIVETED TOGETHER, RIVETS PT N° 55 114-182 ARE TO BE USED.
ALSO
WHEN 1 THICKNESS OF 16 BG & 1 THICKNESS OF 20 BG OR WHEN 1 THICKNESS OF 18 BG & 1 THICKNESS OF 20 BG ARE RIVETED TOGETHER, RIVETS PT N° 55 114-66 ARE TO BE USED.

ALL HOLES TO BE JIG DRILLED WITH THE EXCEPTION OF 4 HOLES FOR N° 8 W/SCREWS

RT 3	RT 404 A1	(AFTER 1/2 BA 394)	RT 3	RT 005 A1	(BEFORE 1/2 BA 394)
TYPE	ASSD ON	TYPE	ASSD ON	TYPE	ASSD ON
ISSUE NO	18	19	ISSUE NO	18	19
MOD NO	2	3	MOD NO	2	3
DATE	6/5/57	32/5/57	DATE	6/5/57	32/5/57
DRAWN	P.E.S.	P.E.S.	DRAWN	P.E.S.	P.E.S.
CHECKED	P.E.S.	P.E.S.	CHECKED	P.E.S.	P.E.S.
PASSED	P.E.S.	P.E.S.	PASSED	P.E.S.	P.E.S.
ISSUE NO	18	19	ISSUE NO	18	19
MOD NO	2	3	MOD NO	2	3
DATE	6/5/57	32/5/57	DATE	6/5/57	32/5/57
DRAWN	P.E.S.	P.E.S.	DRAWN	P.E.S.	P.E.S.
CHECKED	P.E.S.	P.E.S.	CHECKED	P.E.S.	P.E.S.
PASSED	P.E.S.	P.E.S.	PASSED	P.E.S.	P.E.S.

DEPARTMENT OF THE CHIEF MECHANICAL ENGINEER (ROAD SERVICES)
L.T. CHISWICK WORKS, LONDON, W. 4.

PROCESS SPECIFICATION	TITLE	PART N°
PROCESS SPEC. N° 64 TO BE APPLIED TO ALL DETAILS PRIOR TO ASSEMBLY	LONGITUDINAL BATTERY RISER ASSEMBLY.	RT. 042. A1

ALL PARTS MUST BEAR OUR PART NO DATE LETTER & WORKS TOWN MARK

ALTERATIONS
THE FOLLOWING
1. RT 042 A22 ADDED
2. RT 042 A22 REPLACES RT 042 A21
3. RT 042 A22 REPLACES RT 042 A20
4. RT 042 A22 REPLACES RT 042 A19
5. RT 042 A22 REPLACES RT 042 A18
6. RT 042 A22 REPLACES RT 042 A17
7. RT 042 A22 REPLACES RT 042 A16
8. RT 042 A22 REPLACES RT 042 A15
9. RT 042 A22 REPLACES RT 042 A14
10. RT 042 A22 REPLACES RT 042 A13
11. RT 042 A22 REPLACES RT 042 A12
12. RT 042 A22 REPLACES RT 042 A11
13. RT 042 A22 REPLACES RT 042 A10
14. RT 042 A22 REPLACES RT 042 A9
15. RT 042 A22 REPLACES RT 042 A8
16. RT 042 A22 REPLACES RT 042 A7
17. RT 042 A22 REPLACES RT 042 A6
18. RT 042 A22 REPLACES RT 042 A5
19. RT 042 A22 REPLACES RT 042 A4
20. RT 042 A22 REPLACES RT 042 A3
21. RT 042 A22 REPLACES RT 042 A2
22. RT 042 A22 REPLACES RT 042 A1
23. RT 042 A22 REPLACES RT 042 A0
24. RT 042 A22 REPLACES RT 042 A-1
25. RT 042 A22 REPLACES RT 042 A-2
26. RT 042 A22 REPLACES RT 042 A-3
27. RT 042 A22 REPLACES RT 042 A-4
28. RT 042 A22 REPLACES RT 042 A-5
29. RT 042 A22 REPLACES RT 042 A-6
30. RT 042 A22 REPLACES RT 042 A-7
31. RT 042 A22 REPLACES RT 042 A-8
32. RT 042 A22 REPLACES RT 042 A-9
33. RT 042 A22 REPLACES RT 042 A-10
34. RT 042 A22 REPLACES RT 042 A-11
35. RT 042 A22 REPLACES RT 042 A-12
36. RT 042 A22 REPLACES RT 042 A-13
37. RT 042 A22 REPLACES RT 042 A-14
38. RT 042 A22 REPLACES RT 042 A-15
39. RT 042 A22 REPLACES RT 042 A-16
40. RT 042 A22 REPLACES RT 042 A-17
41. RT 042 A22 REPLACES RT 042 A-18
42. RT 042 A22 REPLACES RT 042 A-19
43. RT 042 A22 REPLACES RT 042 A-20
44. RT 042 A22 REPLACES RT 042 A-21
45. RT 042 A22 REPLACES RT 042 A-22
46. RT 042 A22 REPLACES RT 042 A-23
47. RT 042 A22 REPLACES RT 042 A-24
48. RT 042 A22 REPLACES RT 042 A-25
49. RT 042 A22 REPLACES RT 042 A-26
50. RT 042 A22 REPLACES RT 042 A-27
51. RT 042 A22 REPLACES RT 042 A-28
52. RT 042 A22 REPLACES RT 042 A-29
53. RT 042 A22 REPLACES RT 042 A-30
54. RT 042 A22 REPLACES RT 042 A-31
55. RT 042 A22 REPLACES RT 042 A-32
56. RT 042 A22 REPLACES RT 042 A-33
57. RT 042 A22 REPLACES RT 042 A-34
58. RT 042 A22 REPLACES RT 042 A-35
59. RT 042 A22 REPLACES RT 042 A-36
60. RT 042 A22 REPLACES RT