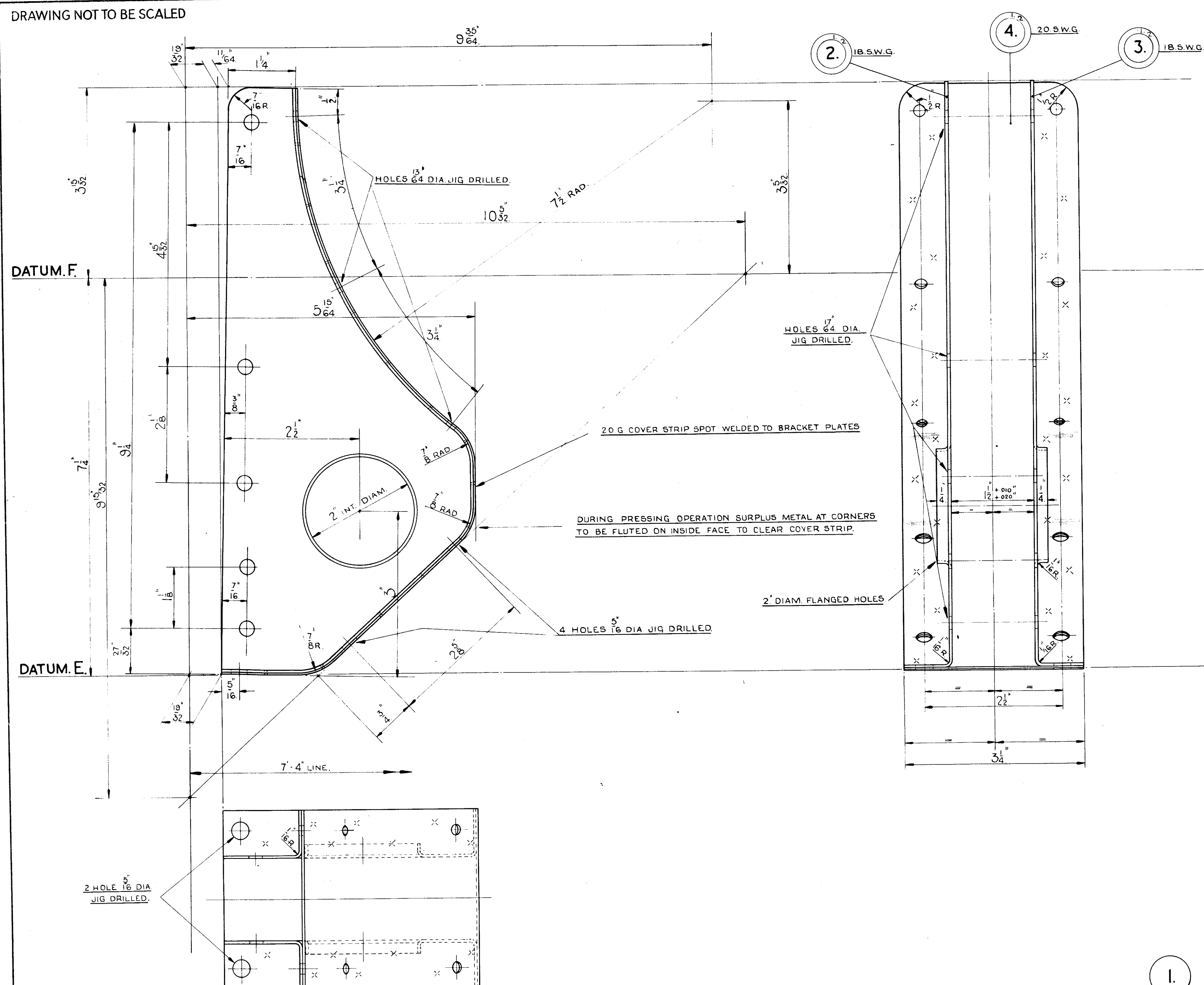



**DRAWING NOT TO BE SCALED**



LAYOUT AVAILABLE		 MACHINE ALL OVER MACHINE GROUND		LIMITS TO BE WALL STAINING P FOR HOLES P PUSH FIT X RUNNING FIT F FORCE FIT D DRIVING FIT Y				LIMITS TO BE IN ACCORDANCE WITH IPTB DATA SHEET D.S.1	
PART NO.		DESCRIPTION				MTL	SPEC	NO PER ASSY	
	RT 035 C1.	FOOT BKT. ASSEMBLY U/S.							
L	RT 035 C2.	FLANGED PLATE L.H.				M.S.	133		1.
L	RT 035 C3	FLANGED PLATE R.H.				M.S.	133		1.
L	RT 035 C4	INSIDE COVER STRIP				M.S.	133		1.
	RT 035 C5.	BLANK FOR FLANGED PLATES				M.S.	133		2

PARTS C2 & C3. TO BE MADE FROM RT035C5.

[illegible]

C 58/109/2(4) 900 + #6	
ALTERATIONS	<p>ISSUE 2</p> <p>HOLES IN SLOPING BOTTOM FLANGES INCREASED FROM 1/16" DIA TO 3/16" DIA PART NO. RT 035 C 2 RT 035, C 3 &amp; C 4 ISSUES 1 &amp; 2 FROM 1.1 TO 2</p> <p>ISSUE 3</p> <p>TRACED WITHOUT ALTERAN</p> <p>ISSUE 4</p> <p>PART NO RT 035 C 5</p> <p>ADDITIONAL HUNDRED POUND BLANKETS NOT REQUESTED BY P. AMERICA, B 2689</p>

## PROCESS SPECIFICATION

P.T. 6.A.

TITLE  
FOOT BRACKET  
ASSEMBLY.  
SIDE PILLARS. U.S.

PART NO  
R.T. O35.C.I.