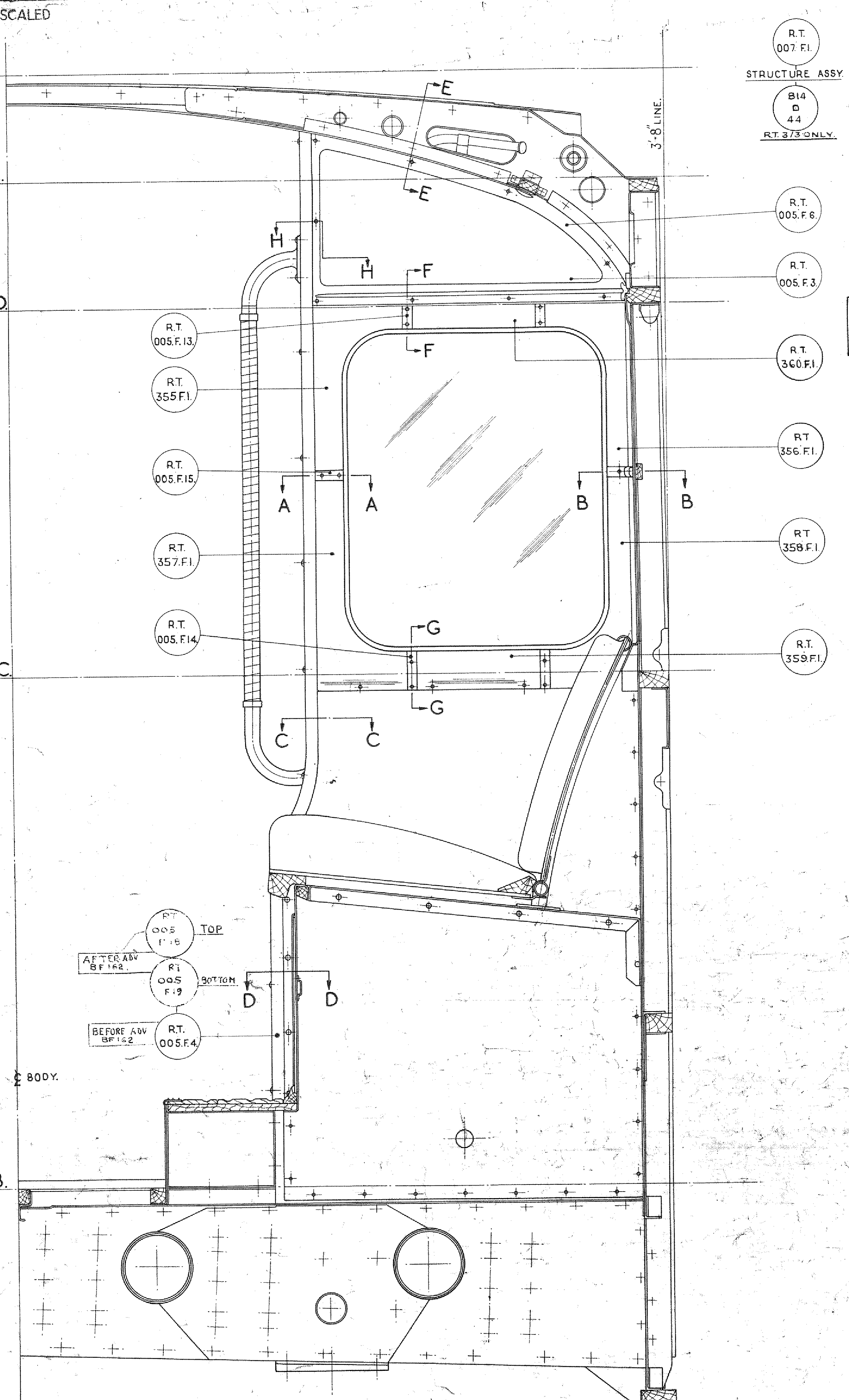
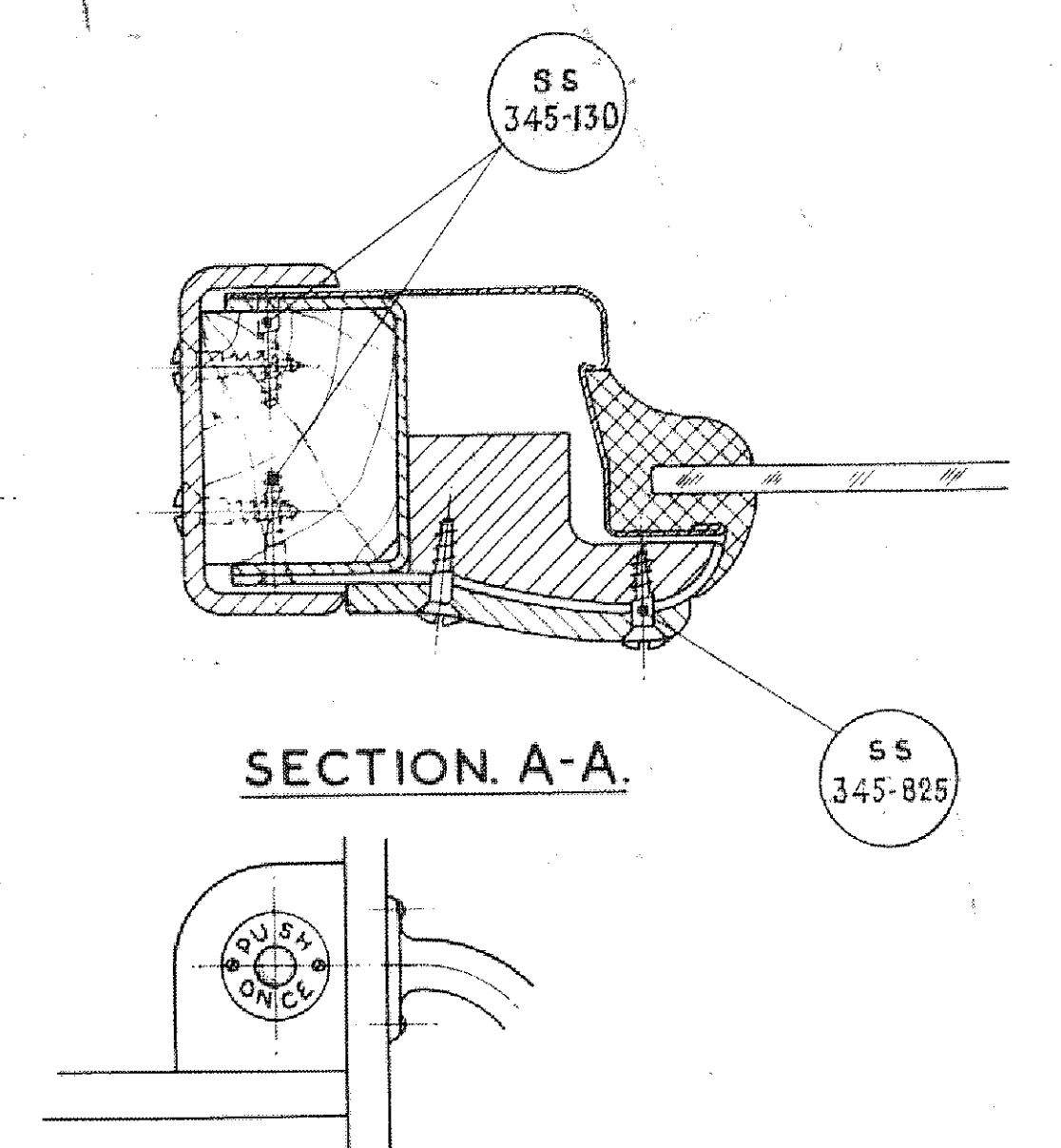
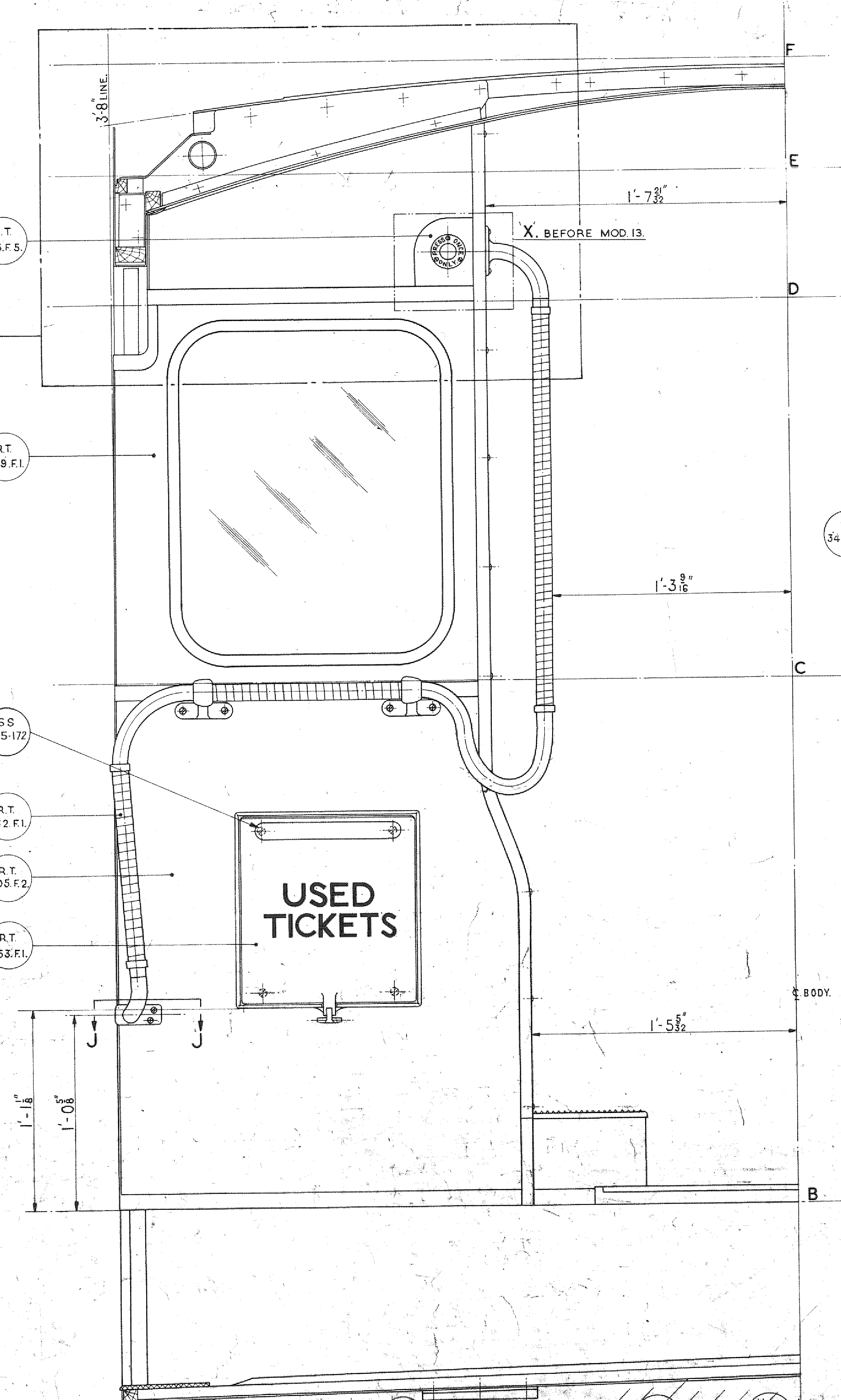


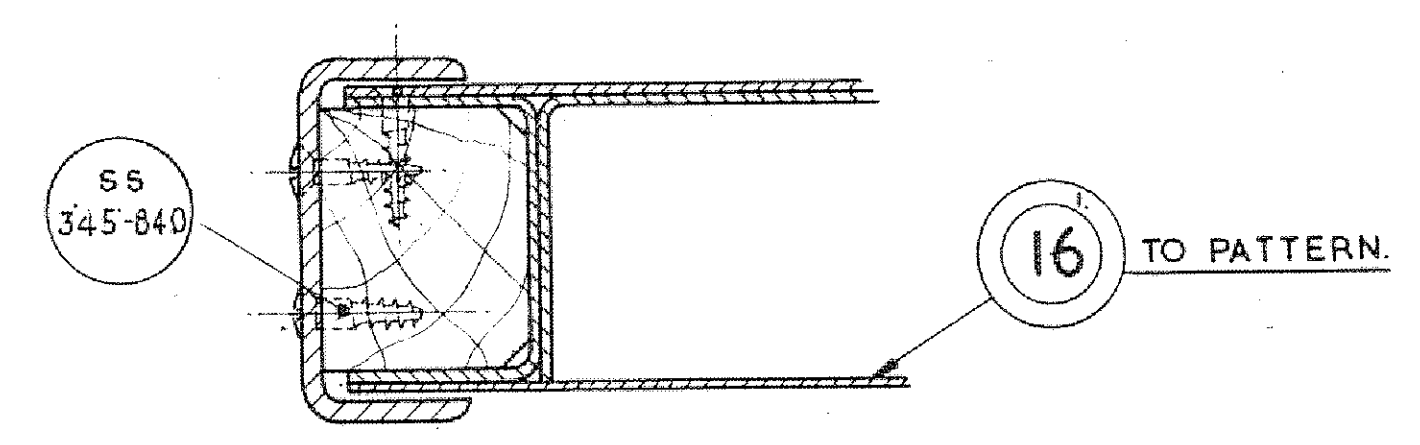
DATUM. B



R.T.
359.FI.



SCRAP VIEW 'X'
AFTER MOD.13.



SS
345-143

Technical drawing of a mechanical part showing a datum feature. A circular feature is labeled with the text "55 (345-441)". A leader line points from this feature to the datum label "DATUM, D-D". The datum is indicated by a horizontal line with arrows pointing to the feature. The part is shown in a cross-sectional view, with various internal features and dimensions labeled. A vertical line labeled "B" is also present on the left side of the drawing.

E ONLY

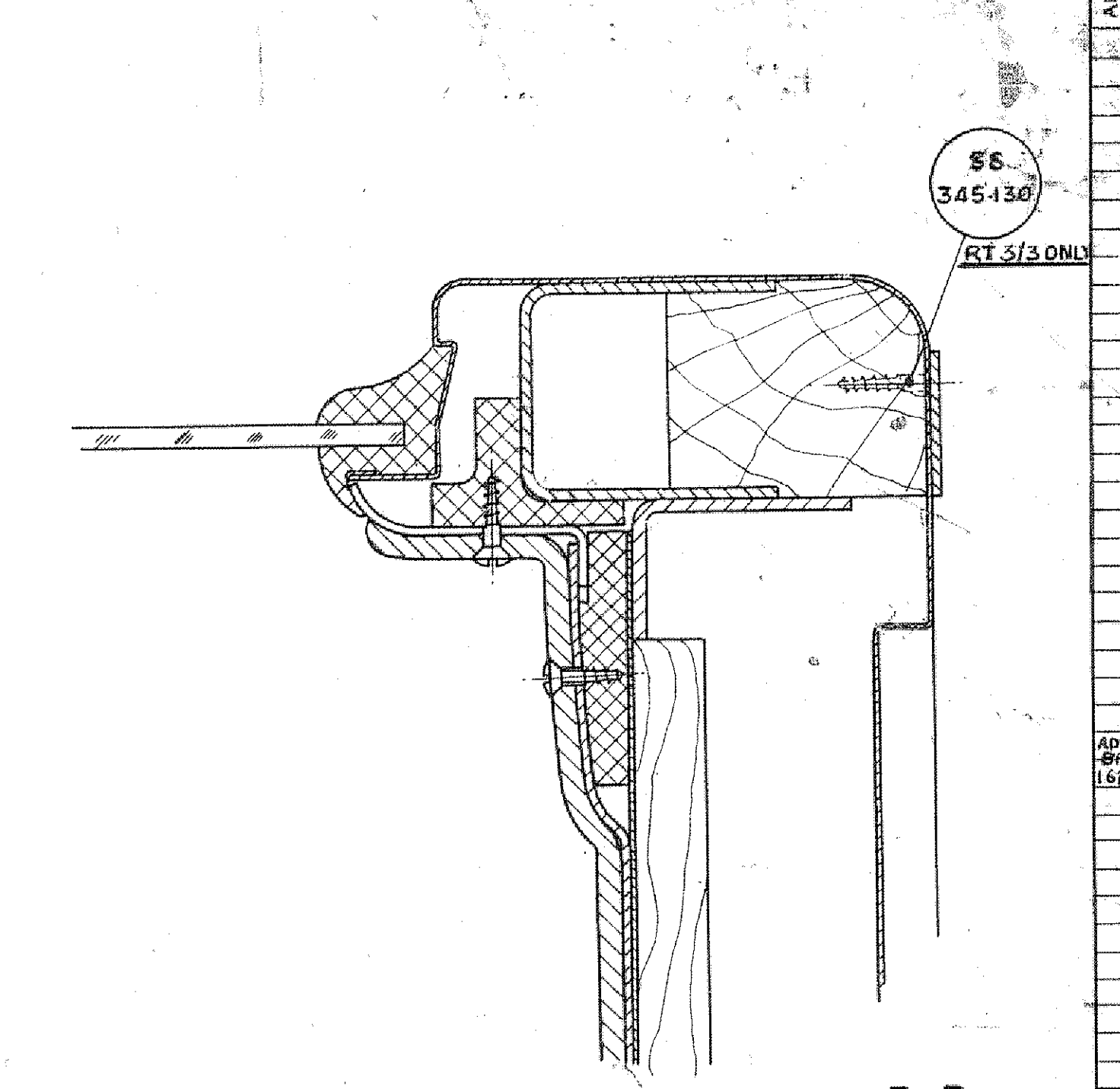
DATUM C-C.

S.S.
345-807

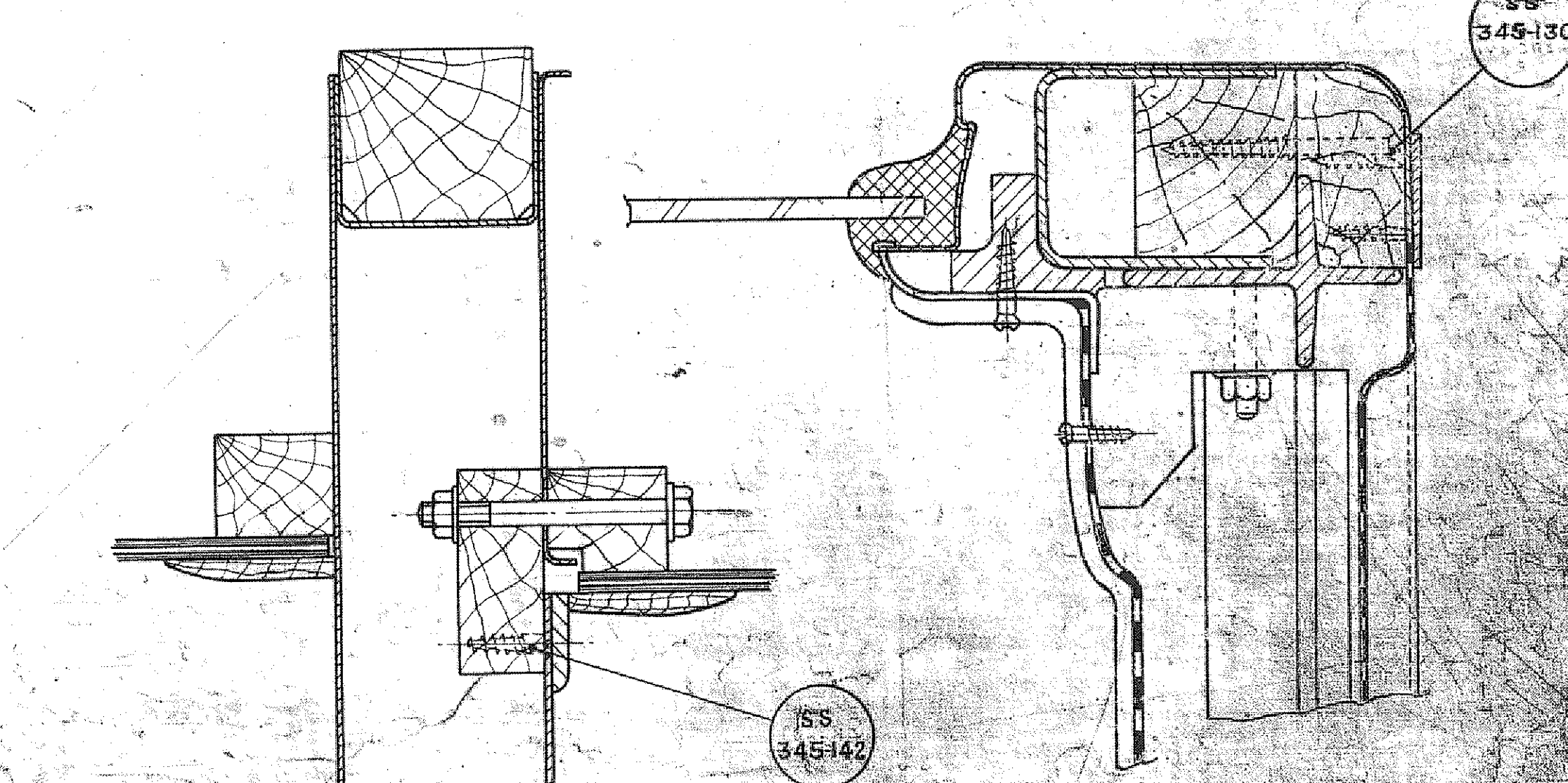
S.S.
345-806

SECTION G-G.

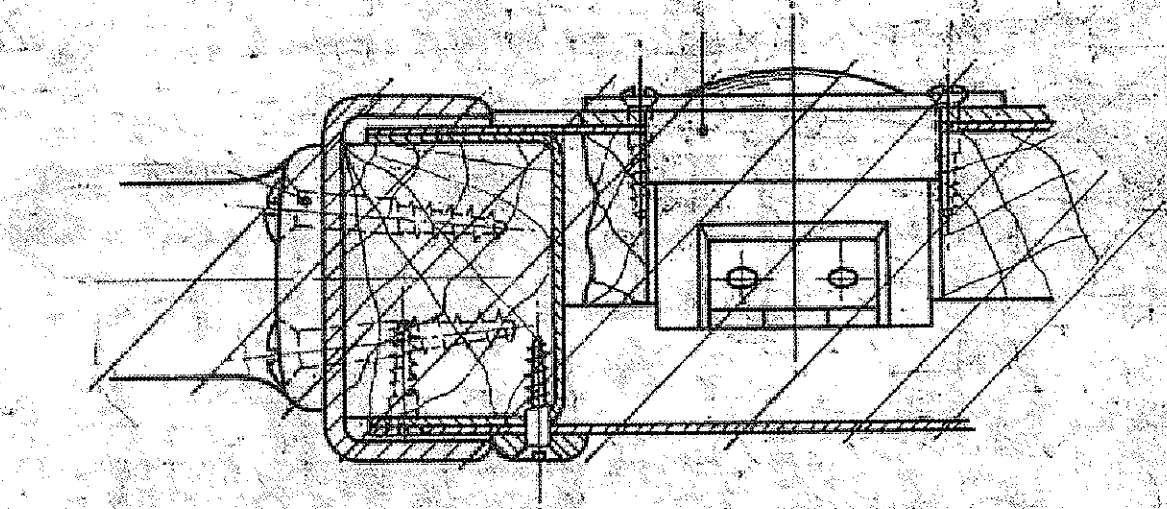
DATUM.C-C.



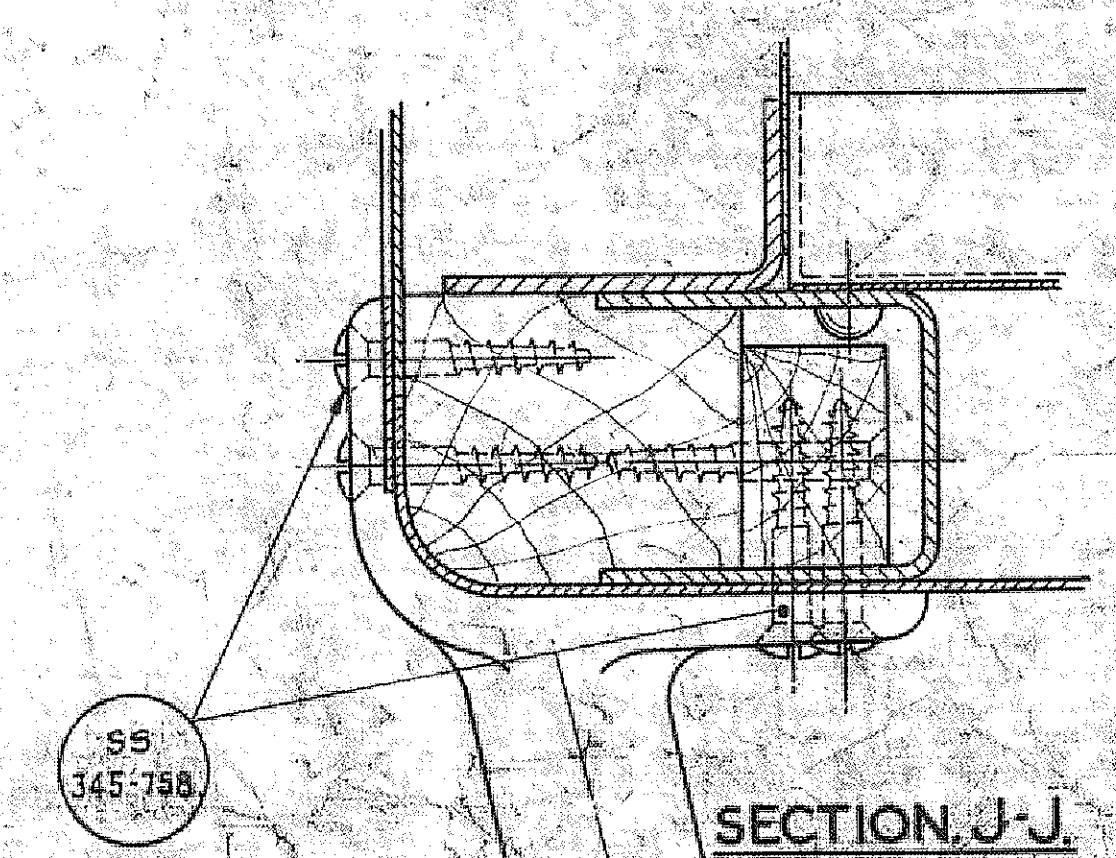
NO ORGS.
SEE SEPARATE PARTS
LIST.



SECTION B-B
FOR PT 3/3 ONLY



~~SECTION H-H~~



SECTION J-J.

[illegible][illegible]

PROCESS SPECIFICATION.

SEE DATA SHEET D.5.10
FOR PROCESS DURING ASS'Y

TITLE
N.S. PARTITION COMPLETE.

PART NO
RT 005 F1

1	INTERACTIONS	33	33
2	SSISE 8	34	34
3	UNRECORDED	35	35
4	INTERACTIONS	36	36
5	FOR FILED (10/25/21)	37	37
6	JACOBIA AND	38	38
7	ADDED	39	39
8	15510 U-180	40	40
9	7/10/2015	41	41
10	W650 500 - PT NO	42	42
11	15510 A-5600/1	43	43
12	FOR AMER MOD	44	44
13	15510 U-180	45	45
14	7/10/2015	46	46
15	W650 500 - PT NO	47	47
16	15510 A-5600/1	48	48
17	FOR AMER MOD	49	49
18	15510 U-180	50	50
19	7/10/2015	51	51
20	W650 500 - PT NO	52	52
21	15510 A-5600/1	53	53
22	FOR AMER MOD	54	54
23	15510 U-180	55	55
24	7/10/2015	56	56
25	W650 500 - PT NO	57	57
26	15510 A-5600/1	58	58
27	FOR AMER MOD	59	59
28	15510 U-180	60	60
29	7/10/2015	61	61
30	W650 500 - PT NO	62	62
31	15510 A-5600/1	63	63
32	FOR AMER MOD	64	64
33	15510 U-180	65	65
34	7/10/2015	66	66
35	W650 500 - PT NO	67	67
36	15510 A-5600/1	68	68
37	FOR AMER MOD	69	69
38	15510 U-180	70	70
39	7/10/2015	71	71
40	W650 500 - PT NO	72	72
41	15510 A-5600/1	73	73
42	FOR AMER MOD	74	74
43	15510 U-180	75	75
44	7/10/2015	76	76
45	W650 500 - PT NO	77	77
46	15510 A-5600/1	78	78
47	FOR AMER MOD	79	79
48	15510 U-180	80	80
49	7/10/2015	81	81
50	W650 500 - PT NO	82	82
51	15510 A-5600/1	83	83
52	FOR AMER MOD	84	84
53	15510 U-180	85	85
54	7/10/2015	86	86
55	W650 500 - PT NO	87	87
56	15510 A-5600/1	88	88
57	FOR AMER MOD	89	89
58	15510 U-180	90	90
59	7/10/2015	91	91
60	W650 500 - PT NO	92	92
61	15510 A-5600/1	93	93
62	FOR AMER MOD	94	94
63	15510 U-180	95	95
64	7/10/2015	96	96
65	W650 500 - PT NO	97	97
66	15510 A-5600/1	98	98
67	FOR AMER MOD	99	99
68	15510 U-180	100	100
69	7/10/2015		
70	W650 500 - PT NO		
71	15510 A-5600/1		
72	FOR AMER MOD		
73	15510 U-180		
74	7/10/2015		
75	W650 500 - PT NO		
76	15510 A-5600/1		
77	FOR AMER MOD		
78	15510 U-180		
79	7/10/2015		
80	W650 500 - PT NO		
81	15510 A-5600/1		
82	FOR AMER MOD		
83	15510 U-180		
84	7/10/2015		
85	W650 500 - PT NO		
86	15510 A-5600/1		
87	FOR AMER MOD		
88	15510 U-180		
89	7/10/2015		
90	W650 500 - PT NO		
91	15510 A-5600/1		
92	FOR AMER MOD		
9			