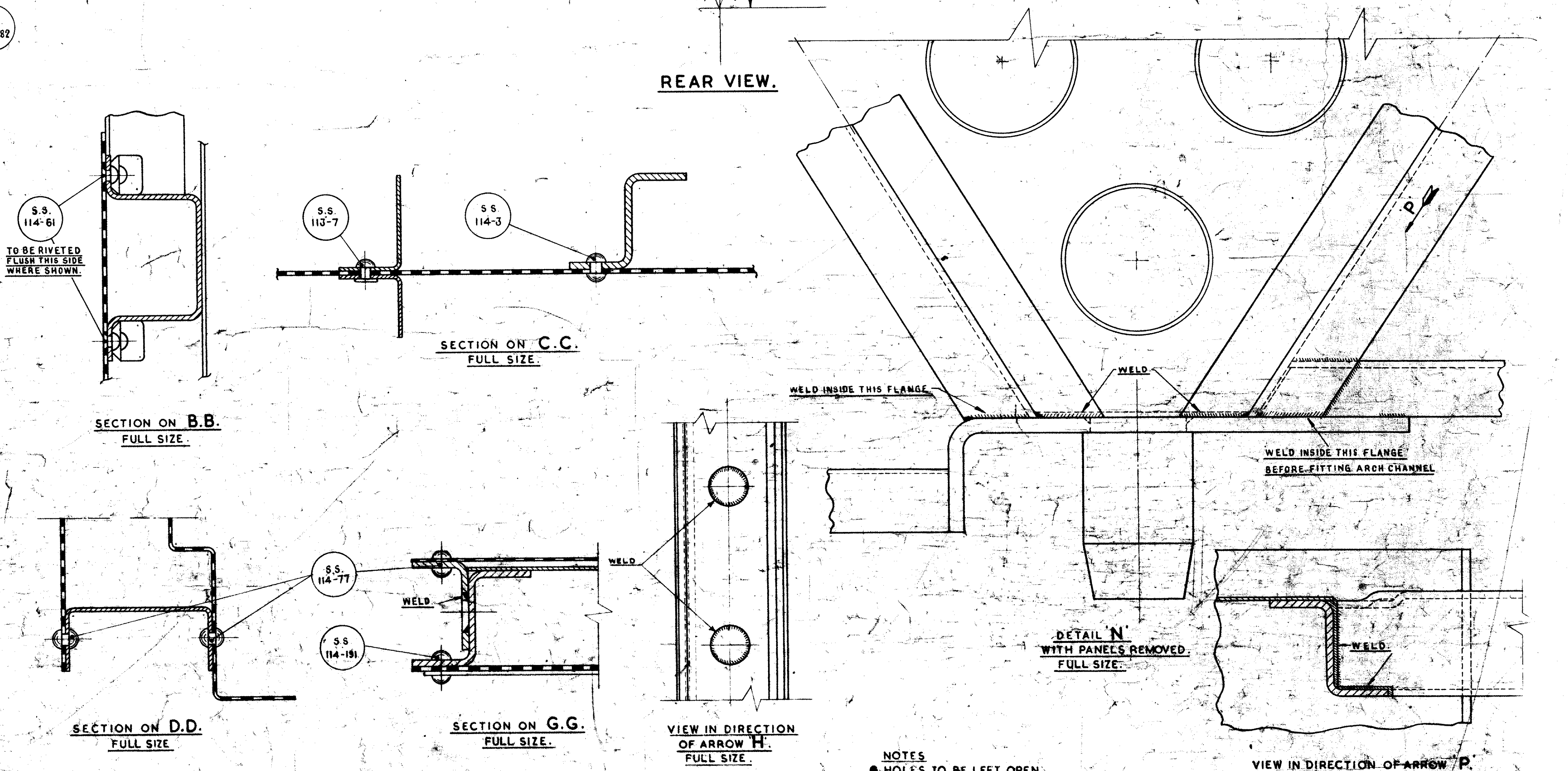
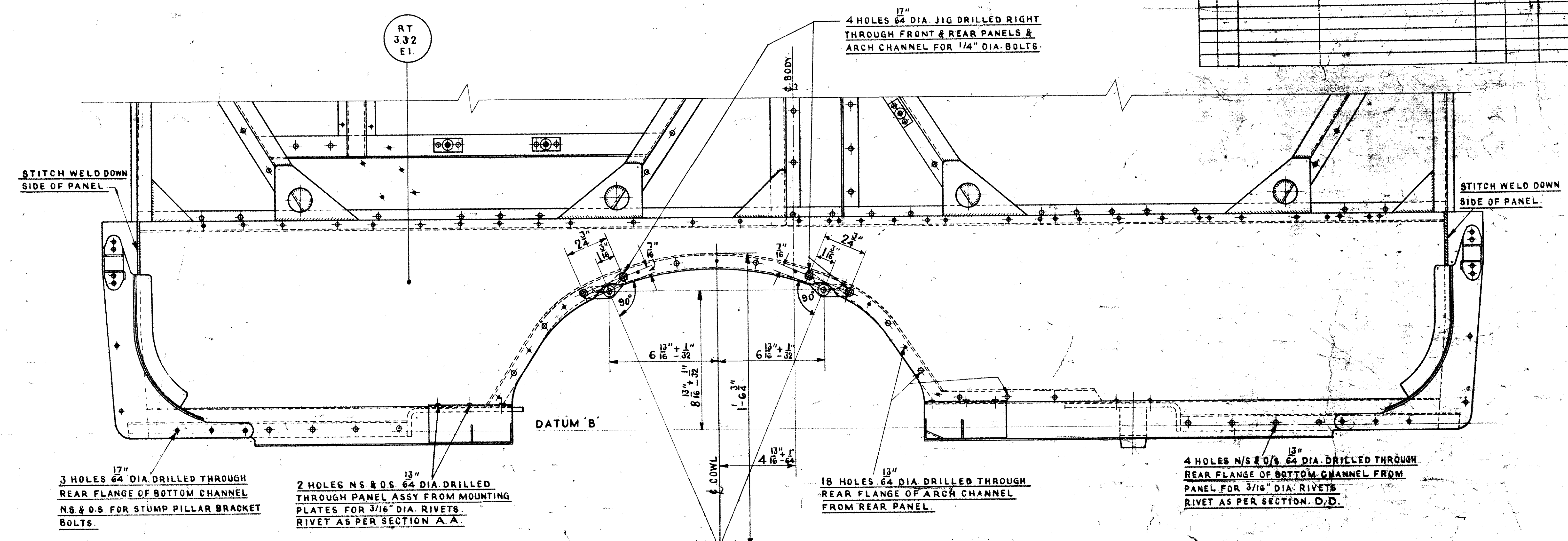
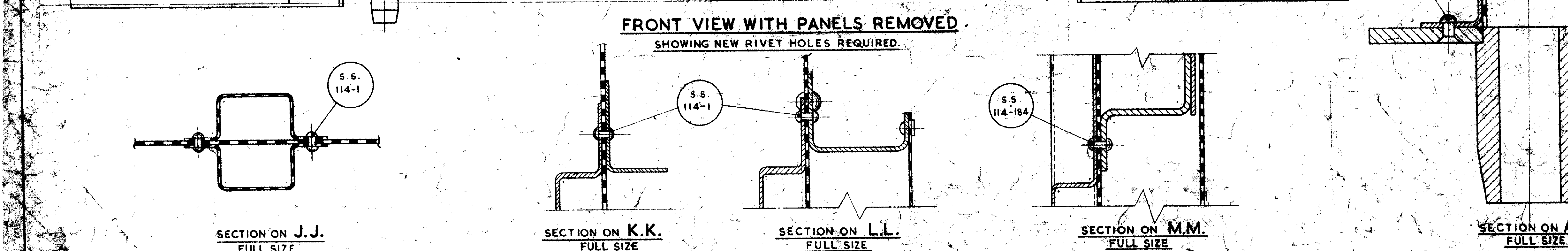
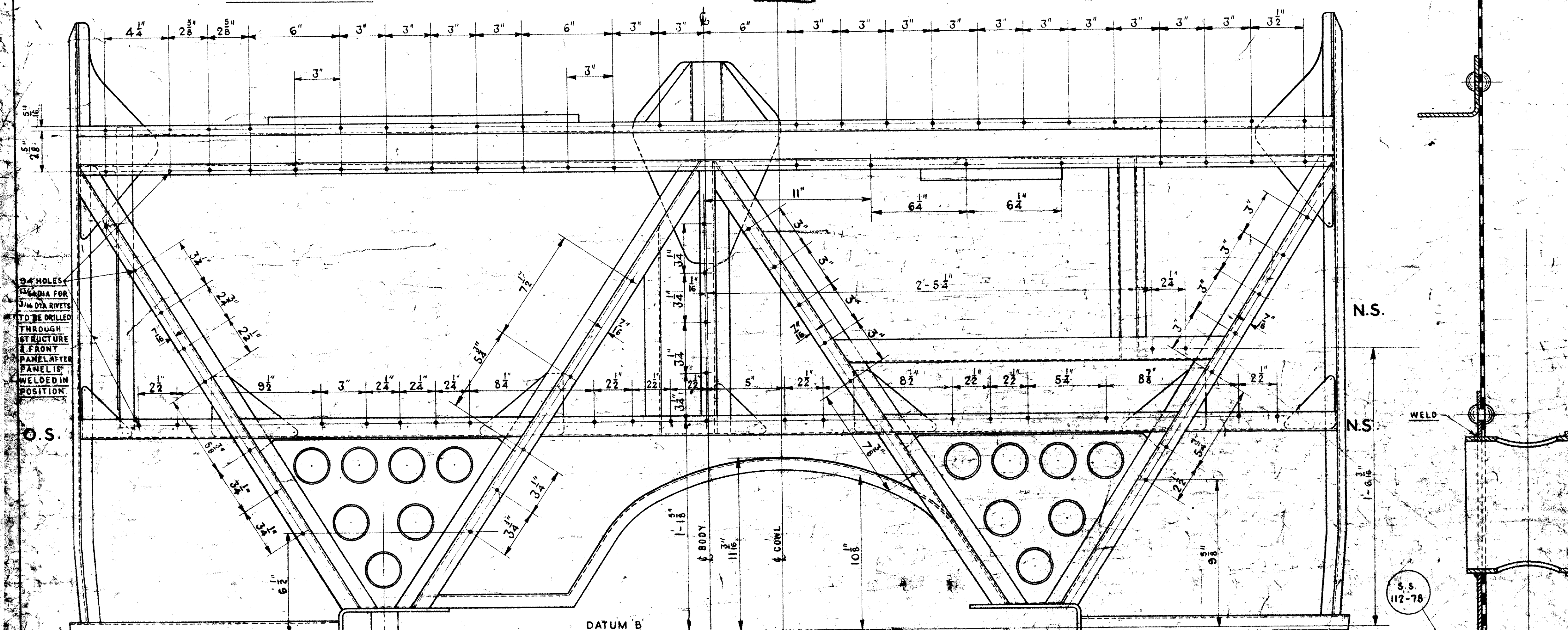
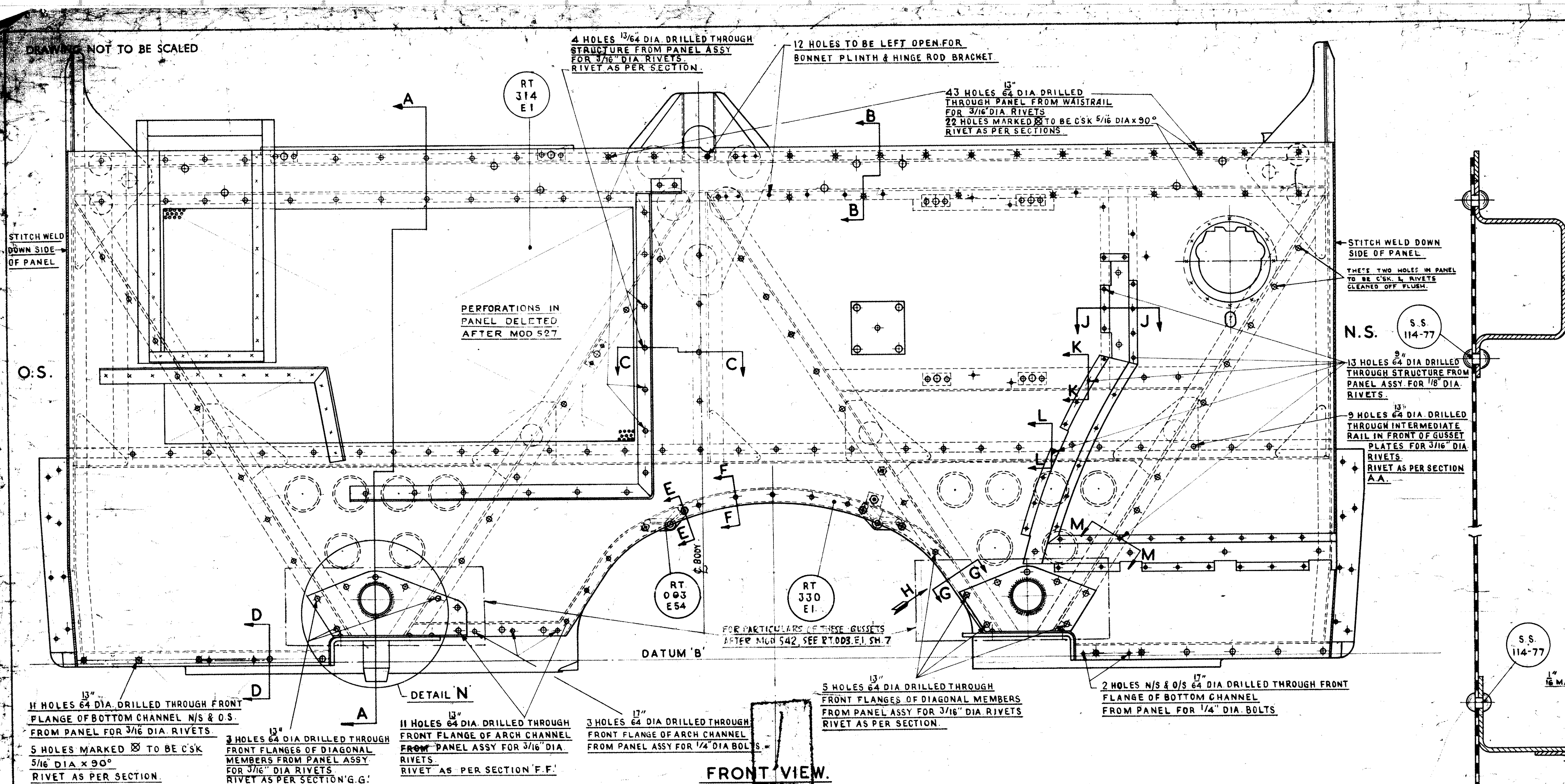


AFTER NO.	MODIFY BEFORE	C C C C	C C C C	APPROX TO NEAR STRUCTURE		APPROX TO NEAR STRUCTURE		APPROX TO NEAR STRUCTURE	
				W/OUT W/OUT W/OUT W/OUT	W/OUT W/OUT W/OUT W/OUT	W/OUT W/OUT W/OUT W/OUT	W/OUT W/OUT W/OUT W/OUT		
				RT 003 ELEVATION	FROM BULKHEAD STRUCTURE				



NOTES  
 ● HOLES TO BE LEFT OPEN.  
 ☒ RIVETS TO BE RIVETED FLUSH ON PANEL.  
FOR DIMENSIONS OF HOLES FOR FIXING  
DRIVERS SEAT, BONNET PLINTH & AUXILIARY  
FUEL TANK SEE SHEET I.

R.T.B/2		RT.002 EL									
TYPE	ASS'D. CN	TYPE		ASS'D. ON		TYPE	TYPE		TYPE		TYPE
ISSN NO	1	2	3	4	5	6	7		8		9
ISSN NO	258	258	258A	257	256	245					
DATE	28.12.52	1.1.53	2.1.53	30.12.52	29.12.52	28.12.52					
DRAWN	LM	RHS	WHS	LM	WHS	LM					
CHECKED	LM	RHS	WHS	LM	WHS	LM					
FILED	65	62	56	50	44	38					
MODIFY											
NOTE											
DRAWN											
CHECKED											

REPRODUCTION OF THIS MATERIAL THROUGH COM-  
MUNIST CHANNELS WORKS LONDON

THIS DRAWING IS  
REQUIRED FOR RT8  
WHEN MOD 298 IS EMBODIED

## PROCESS SPECIFICATION

10 TITLE

11 FRONT BULKHEAD STRUCTURE

[illegible]