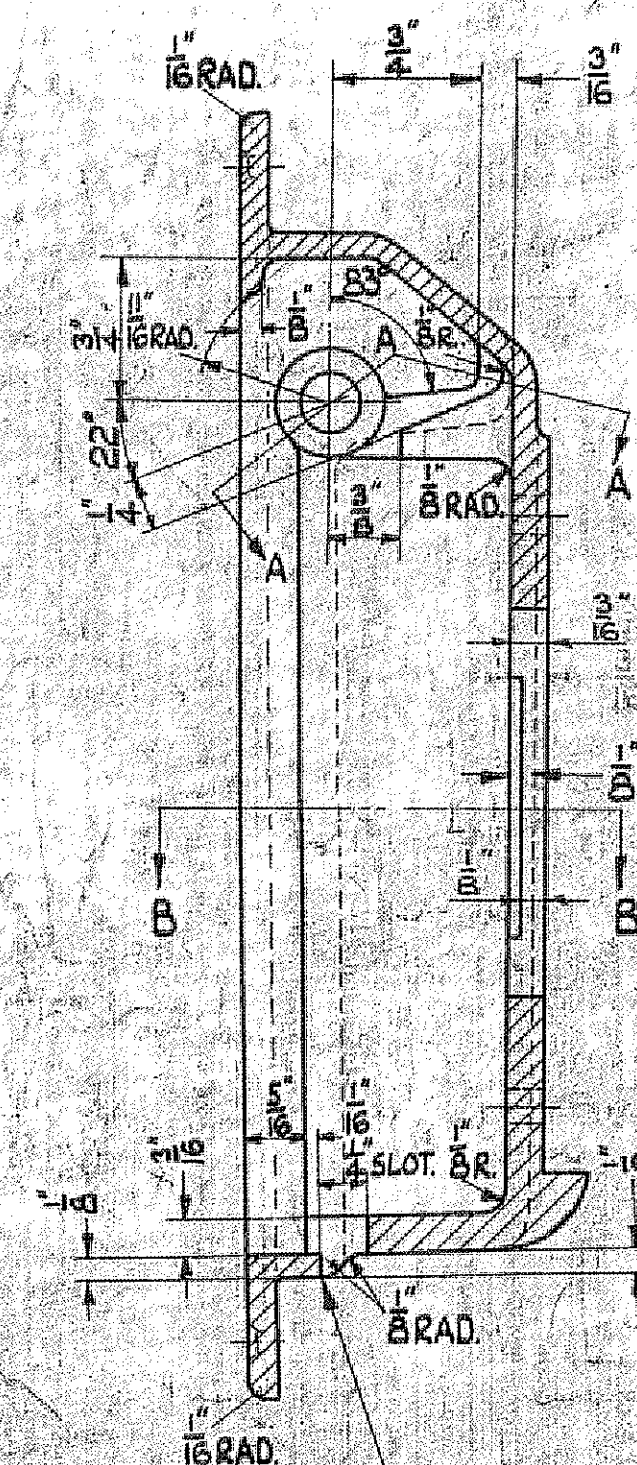
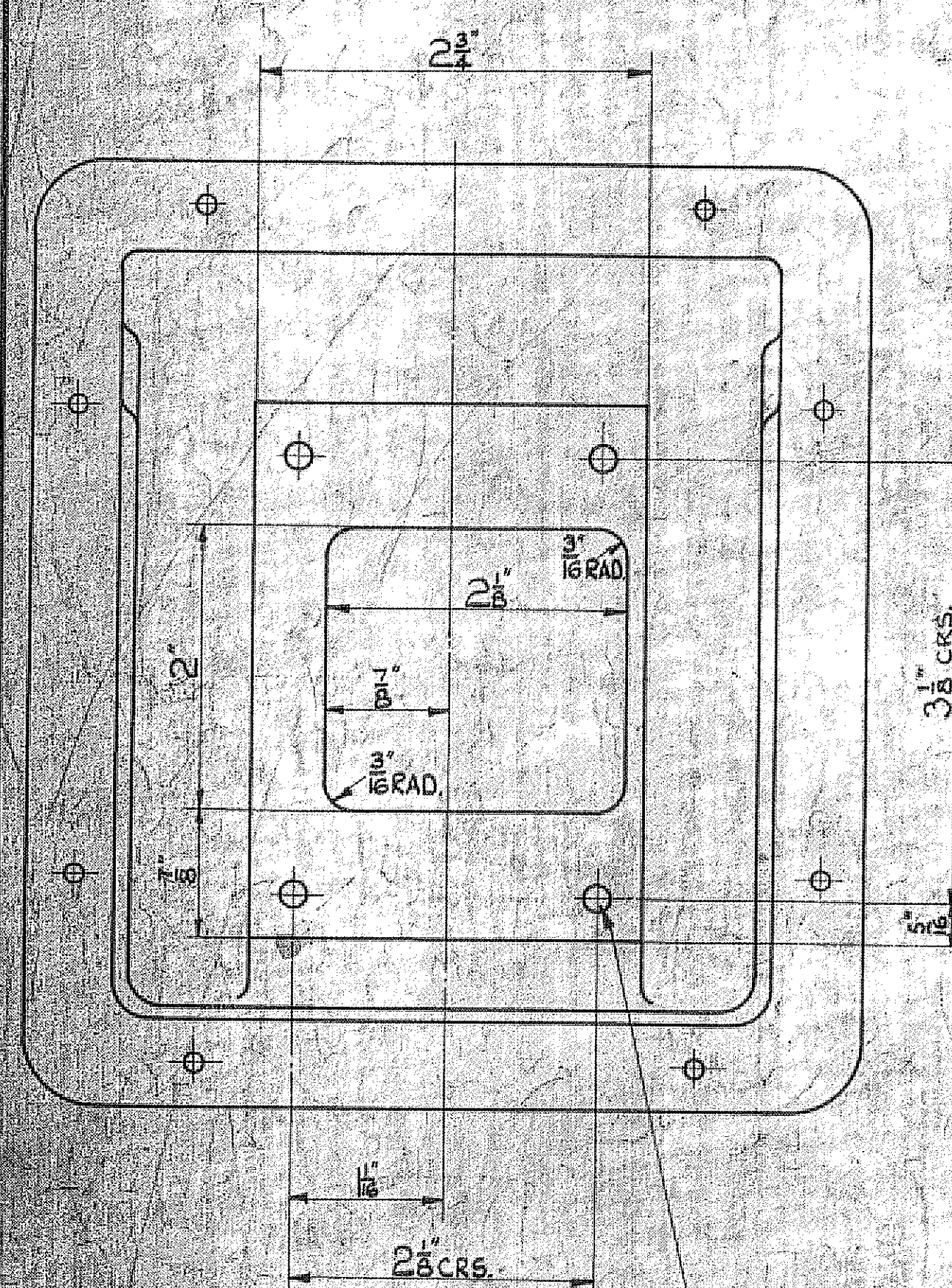
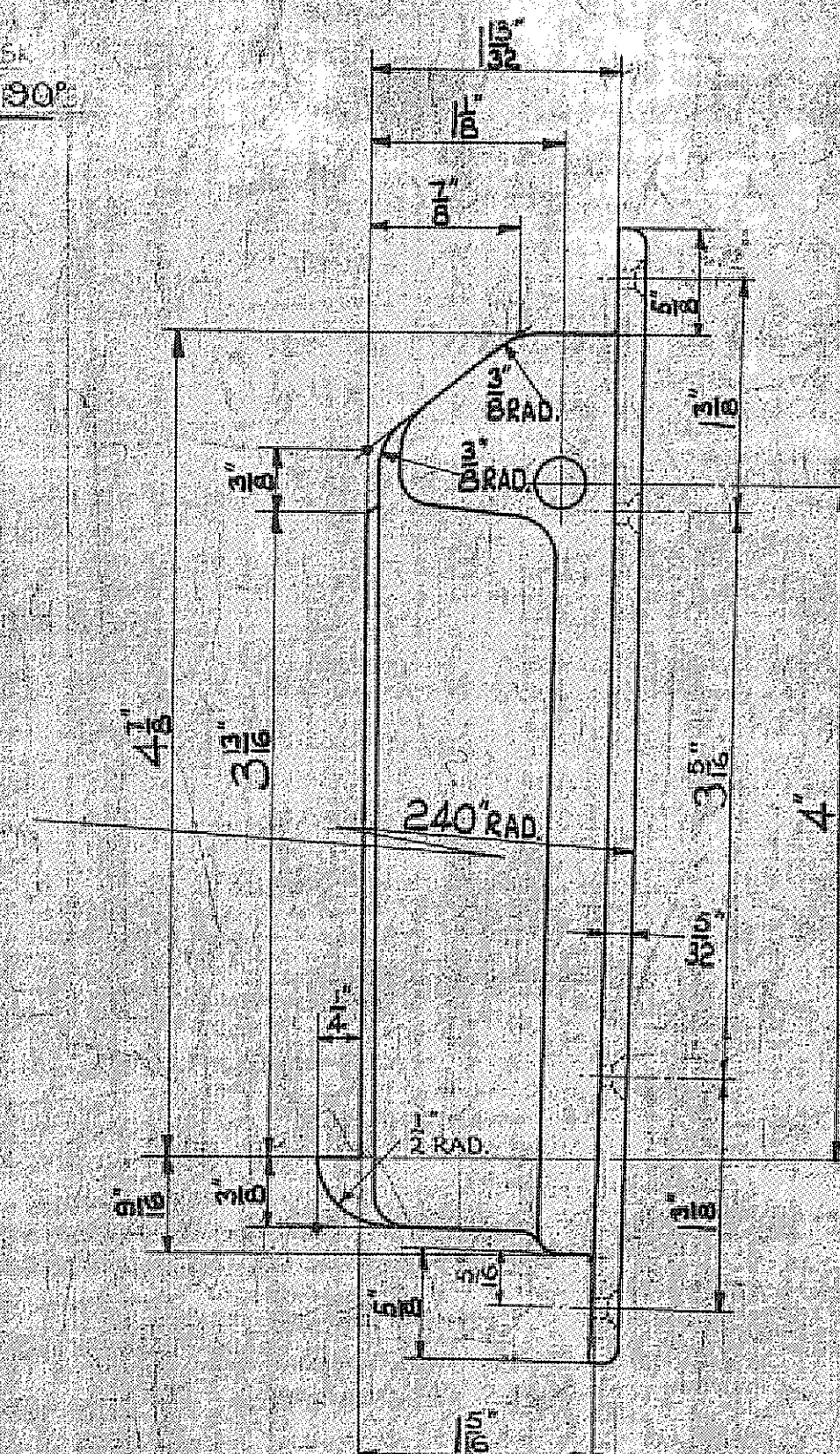
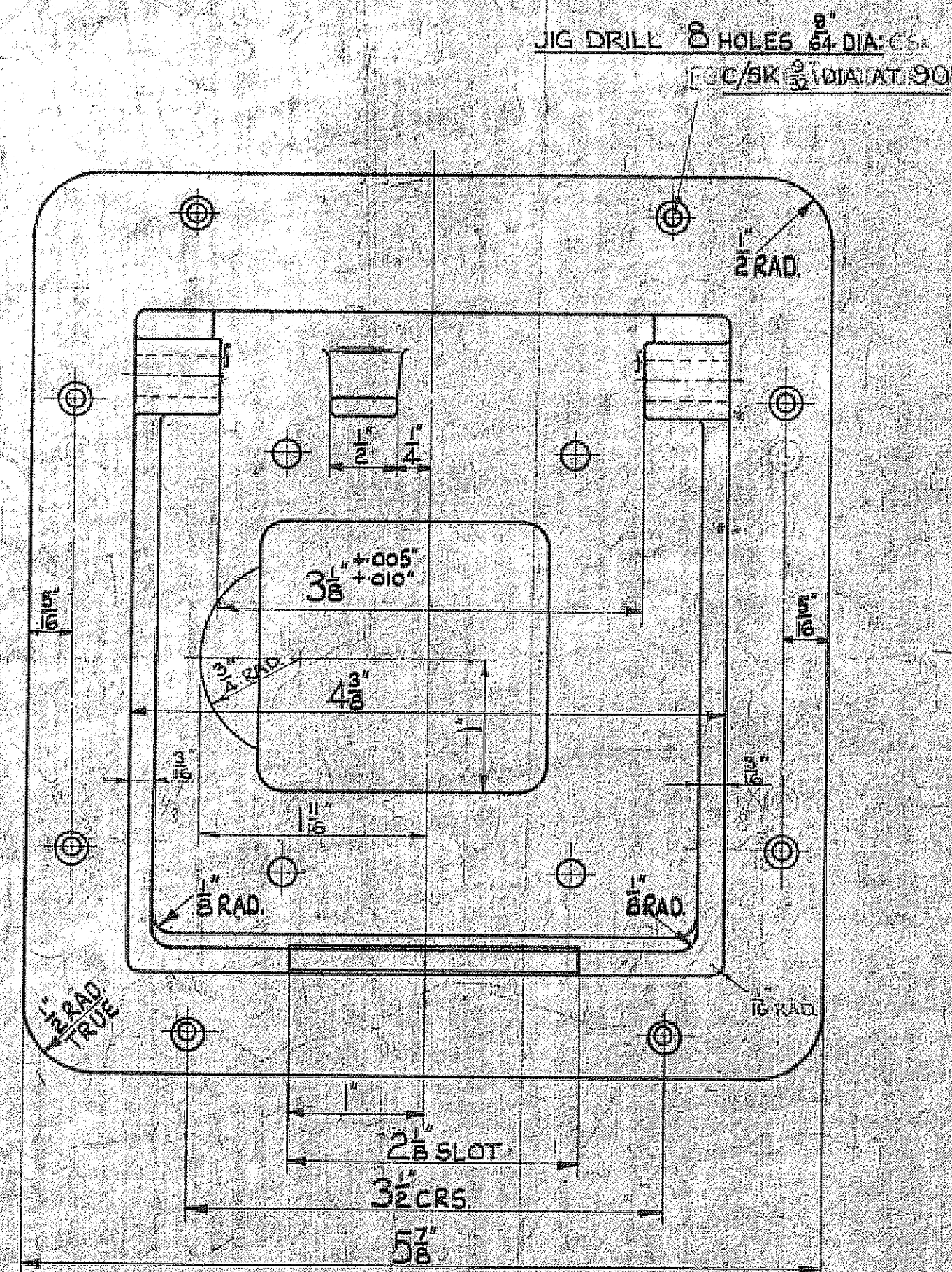


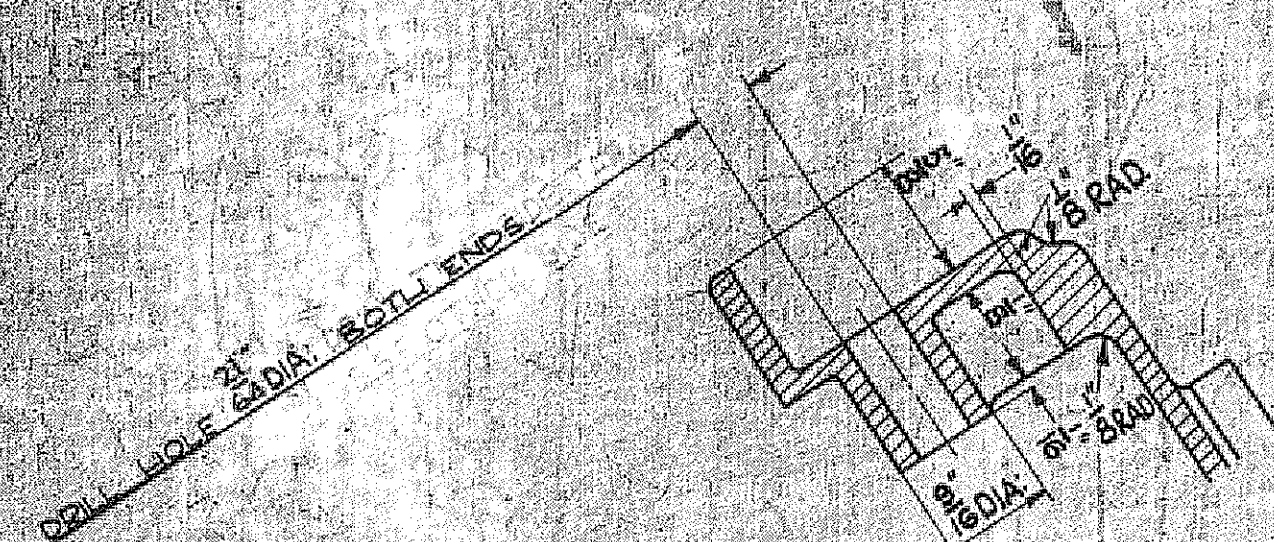
DRAWING NOT TO BE SCALED

[illegible]

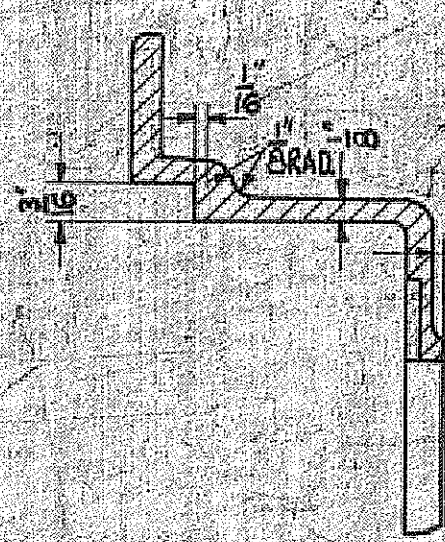
THIS SIDE OF SLOT TO BE  
FILED TO SUIT BUDGET LOCK.



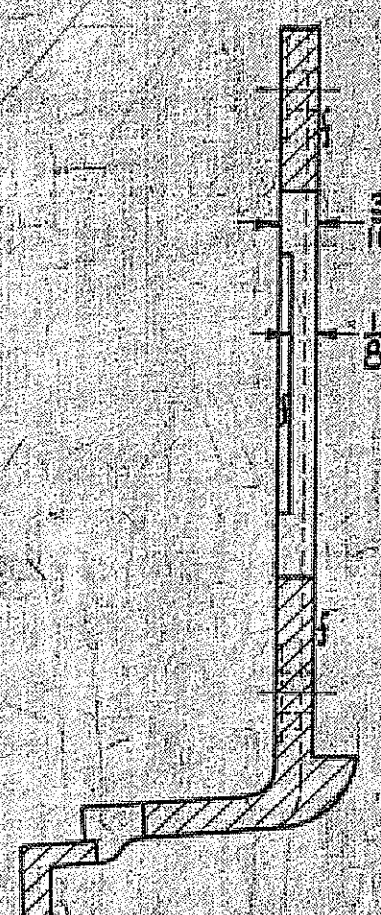
4 HOLES  $\frac{13}{64}$ " DIA:  
JIG DRILL



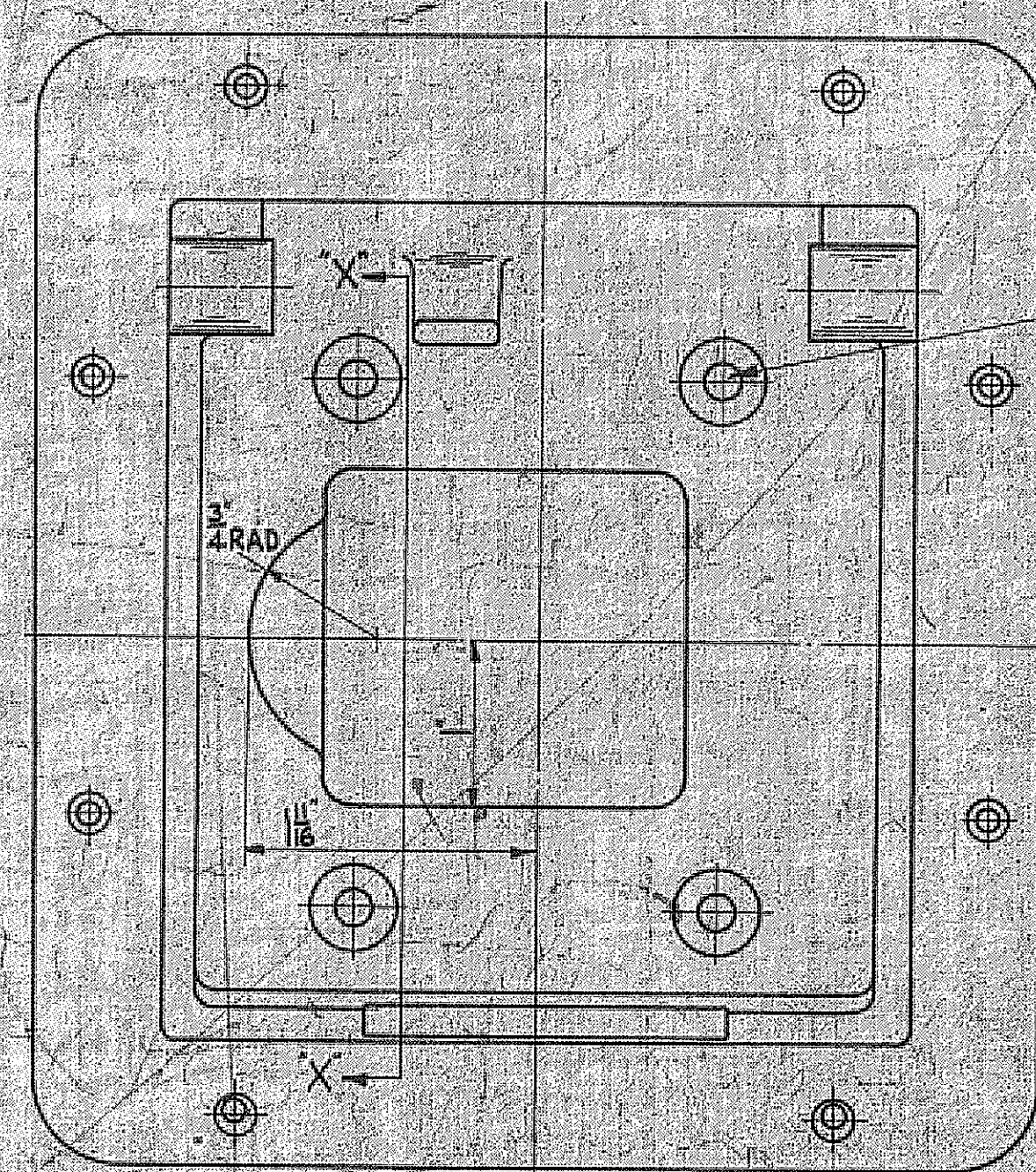
SECTION "AAA"



SECTION "BB"



SECTION XX



4 HOLES  $\frac{13}{16}$ " DIA SPOT FACED  
 $\frac{1}{2}$ " DIA TO CLEAN UP

MADE FROM SAND  
OR DIE CASTING

[illegible]

DEPARTMENT OF THE CHIEF ENGINEER (BUSES & COACHES)  
11, CHISWICK WORKS, LONDON W 4

TITLE  
AUXILIARY STARTER  
SOCKET BRACKET

PROCESS SPEC. NO.	PT. 6 C.
PART NO.	3049-171

VIEWS SHOWING MACHINING REQUIRED FOR SAND CASTING.

<p> <b>ISSUE #12</b>  <b>7/16 DIA. BAR IN</b>  <b>PTG.C. ADDED.</b> </p>	<p> <b>ISSUE #13</b>  <b>7/16 DIA. BAR IN</b>  <b>PTG.C. ADDED.</b> </p>	<p> <b>ISSUE #14</b>  <b>7/16 DIA. BAR IN</b>  <b>PTG.C. ADDED.</b> </p>	<p> <b>ISSUE #15</b>  <b>7/16 DIA. BAR IN</b>  <b>PTG.C. ADDED.</b> </p>
--	--	--	--