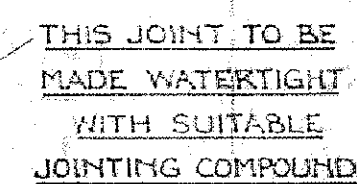
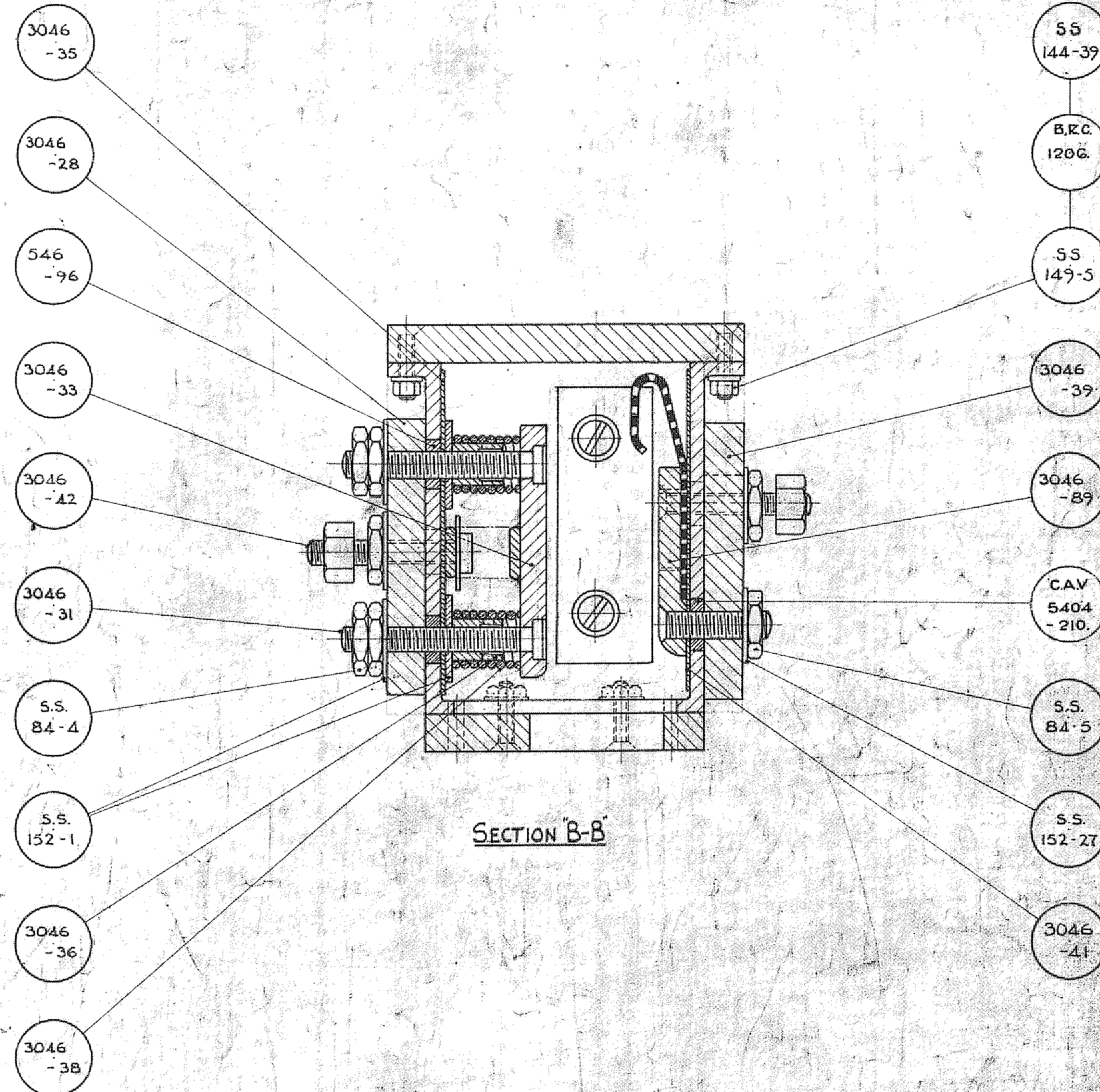
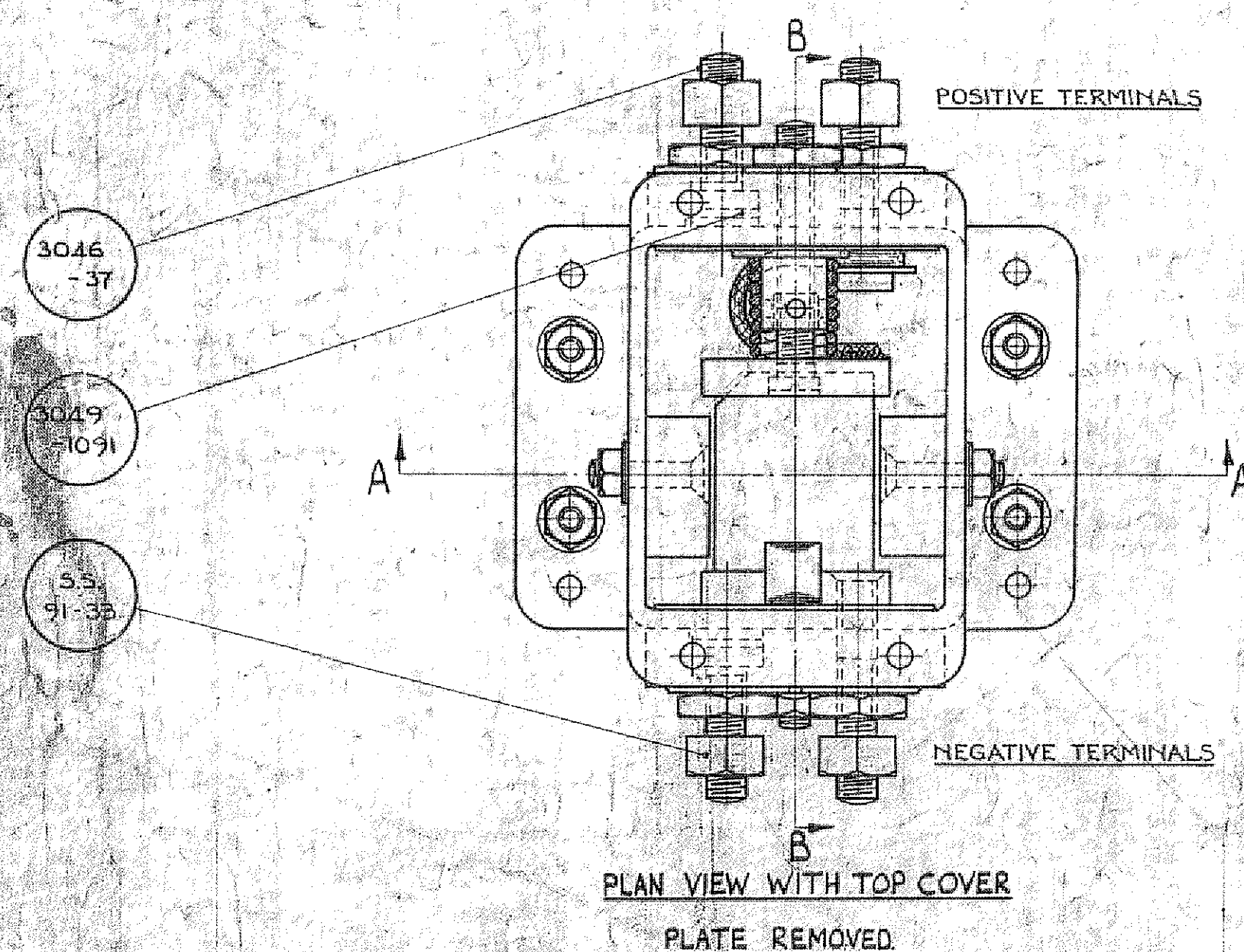
 MACHINED OVER GROUND	LIMITS TO NEWELL STANDARDS			LIMITS TO B.E. & A.			
	B FOR HOLES F FOR FITS	P PLUS OVER UNDER	F FIT TOLERANCE	X X X	MINIMUM FIT TOLERANCE	MAXIMUM FIT TOLERANCE	
PART NO.				DESCRIPTION	MTL	SPEC	NUMBER ASSY.
	3046-26	AUXILIARY STARTER SOCKET ASSEMBLY			*		1
	3046-29	FIXED CONTACT ASSEMBLY			*		1
	3046-33	MOVEABLE			*		1
	3046-27	BOTTOM COVER PLATE			*		1
	3046-28	INSULATING BLOCK			*		1
	3046-31	BOLT			*		2
	3046-32	CABING			*		1
	3046-34	GUIDE BLOCK			*		2
	3046-35	INSULATING STRIP			*		1
	3046-36	STOP			*		2
	3046-37	CONTACT SCREW			*		2
	3046-38	SPRING			*		2
	3046-39	INSULATING BLOCK			*		1
	3046-40	TOP COVER PLATE			*		1
	3046-41	INSULATING STRIP			*		1
	3046-42	CONTACT SET SCREW			*		1
	546-96	INSULATING BUSH			*		1
	CAV.8404-210	"			*		3
	3049-1071	DISC			*		2
	5.5.144-20	2 BA. x 3/4 CSK SCREW			BRASS		8
	5.5.149-3	2 BA. HEX. NUT			"		8
	BRC.1210	2 BA. SHAKEPROOF WASHER			STEEL		8
	5.5.84-4	1/4 B.S.F. HEX. LOCKNUT			BRASS		4
	5.5.152-1	1/4 DIA. PLAIN WASHER			"		4
	5.5.84-5	3/16 B.S.F. HEX. LOCKNUT			"		5
	5.5.152-27	3/16 DIA. PLAIN WASHER			"		6
	5.5.91-33	3/16 B.S.F. HEX. NUT			"		4
	5.5.144-39	4 BA. x 3/4 CSK SCREW			"		4
	5.5.149-5	4 BA. HEX. NUT			"		4
	BRC.1206	4 BA. SHAKEPROOF WASHER			STEEL		4



SECTION "A.A"



SECTION "B-B"



SEE SEPARATE DRAWING

RT.3		3049-1070		RT.3		3049-1070		RT.3		3049-1070	
TYPE	ASSD-ON	TYPE	ASSD-ON	TYPE	ASSD-ON	TYPE	ASSD-ON	TYPE	ASSD-ON	TYPE	ASSD-ON
ISSUE NO	1	2	3	4	5	6	7	8	9	10	11
ALTN NO	1	2	3	4	5	6	7	8	9	10	11
DATE	1/4/86	1/6/86	1/13/86	1/15/86	1/17/86	1/19/86	1/21/86	1/23/86	1/25/86	1/27/86	1/29/86
DRAWN	1	2	3	4	5	6	7	8	9	10	11
CHECKED	1	2	3	4	5	6	7	8	9	10	11
PASSED	1	2	3	4	5	6	7	8	9	10	11
ISSUE NO	1	2	3	4	5	6	7	8	9	10	11
ALTN NO	1	2	3	4	5	6	7	8	9	10	11
DATE	1/4/86	1/6/86	1/13/86	1/15/86	1/17/86	1/19/86	1/21/86	1/23/86	1/25/86	1/27/86	1/29/86
DRAWN	1	2	3	4	5	6	7	8	9	10	11
CHECKED	1	2	3	4	5	6	7	8	9	10	11
PASSED	1	2	3	4	5	6	7	8	9	10	11

DEPARTMENT OF THE CHIEF ENGINEER (BUSES & COACHES)
4 PETER CHISWICK WORKS, LONDON, W.1

TITLE	PROCESS SPEC. N°
AUXILIARY STARTER SOCKET ASSEMBLY	PART N° 3046-26

[illegible]