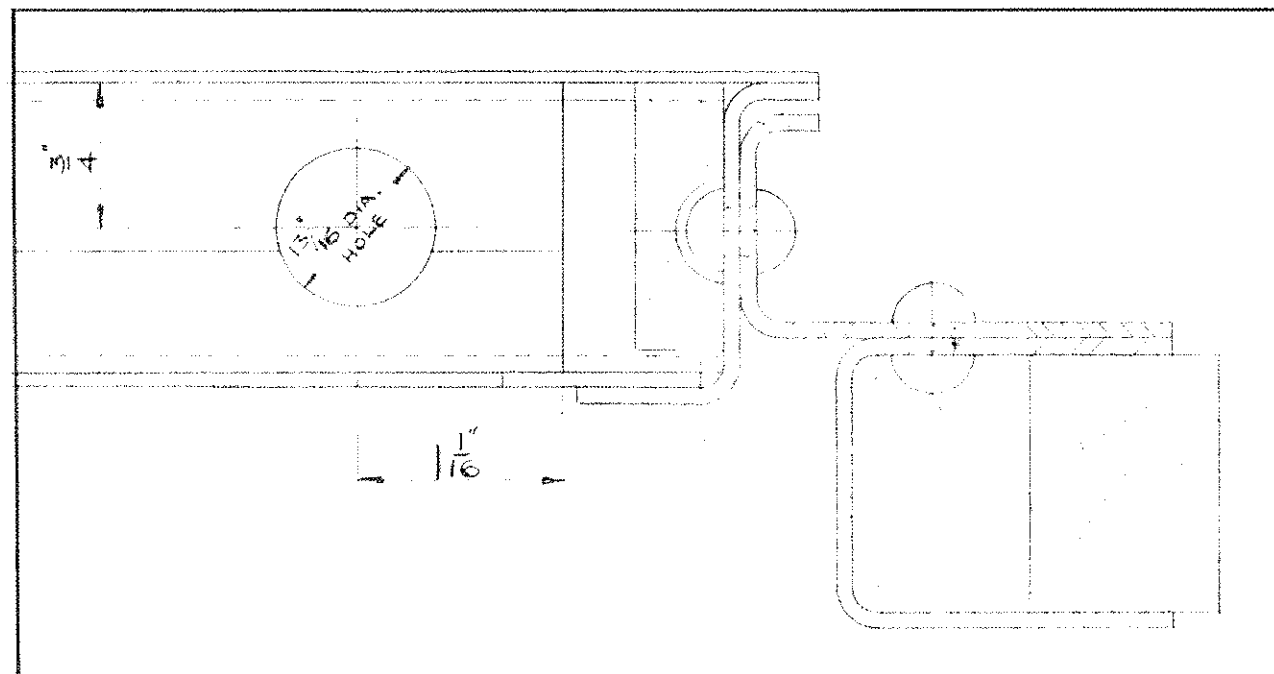


### A3 Drawings Index Sheet - Front Bulkhead

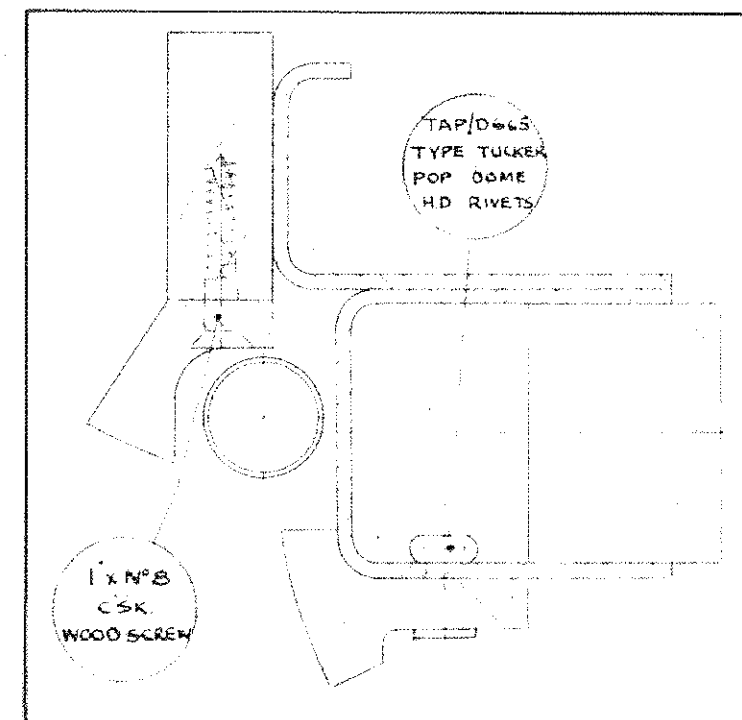
Page No.	Drawing Number	Drawing Title
2	RT.016.A5	Attachment bracket
3	RT.002.E1 sh.2	Bulkhead structure & timber packings
4	RT.002.E1 sh.3	Bulkhead structure & timber packings assembly
5	RT.002.E1 sh.4	Bulkhead structure & timber packings assembly
6	RT.002.E1 sh.5	Bulkhead structure & timber packings
7	RT.003.E1 sh.2	Front bulkhead structure
8	RT.003.E1 sh.3	Front bulkhead structure
9	RT.003.E3/E4	Outside pillar
10	RT.003.E8	Mounting plate N/S
11	RT.003.E9	Mounting plate O/S
12	RT.003.E24	Gusset plate
13	RT.003.E25	Gusset plate
14	RT.003.E26	Gusset plate
15	RT.003.E27	Gusset plate
16	RT.003.E28/29	Gusset bracket
17	RT.003.E30/31	Gusset bracket
18	RT.003.E32	Tube
19	RT.003.E35	Stiffener plate - bonnet prop
20	RT.003.E37	Dowel
21	RT.003.E38	O/S wheelarch support angle - front bulkhead
22	RT.003.E39	Support angle
23	RT.003.E40	Fixing plate
24	RT.003.E46/47	Connecting angle
25	RT.003.E50	Support angle - engine shield
26	RT.003.E55	Packing piece for bulkhead bottom reinforcing plate
27	RT.017.E1	Panel assembly
28	RT.017.E3	Gusset bracket
29	RT.028/029.E1	Bracket assembly
30	RT.028.E3	Plate - bracket assembly
31	RT.132.E1	Bracket assembly O/S
32	RT.324.E3	Support angle - engine shield & cab floor
33	RT.324.E4	Support angle - cab floor
34	RT.325.E1	Upper support angle - N/S wing structure
35	RT.326.E1	Lower support angle - N/S wing structure
36	RT.366.E5	Corner support for N/S wing structure
37	RT.433.E1	Patch plate assembly - N/S
38	RT.434.E1	Patch plate assembly - O/S



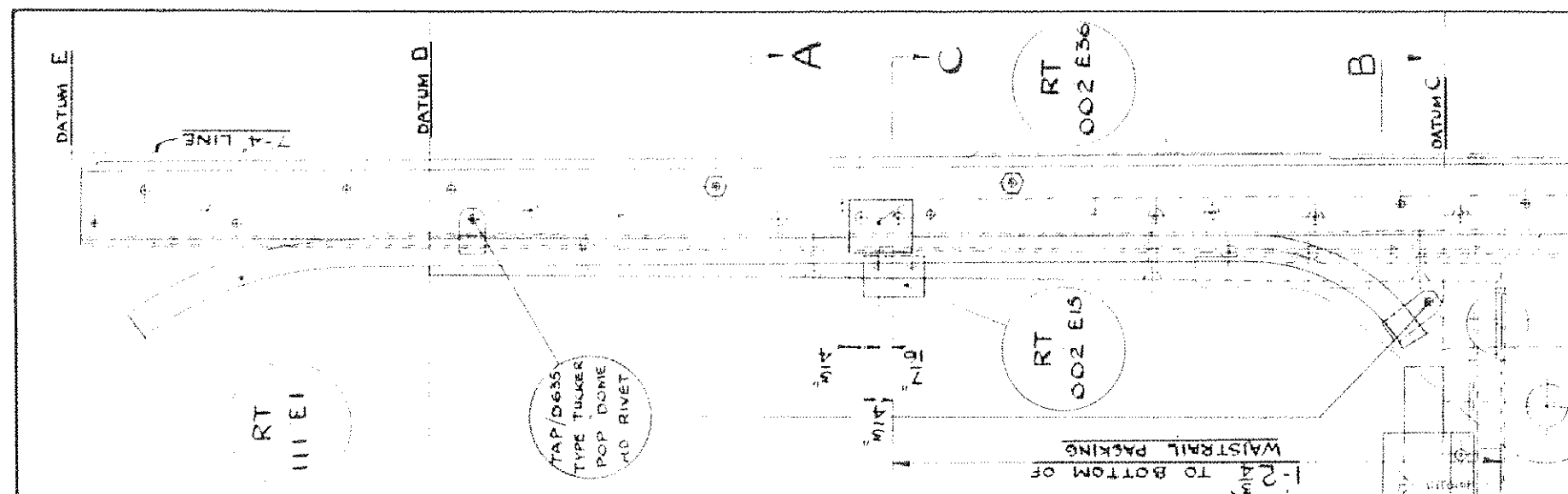
DRAWING NOT TO BE SCALED



SECTION B-B O.S.



SECTION C-C O.S.



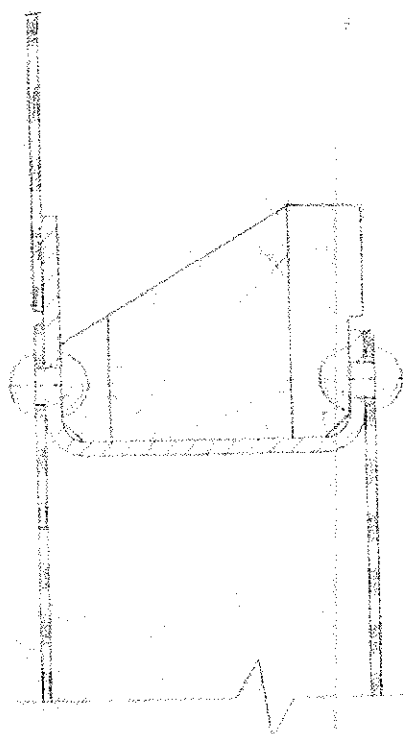
DETAIL W

ALTERATIONS

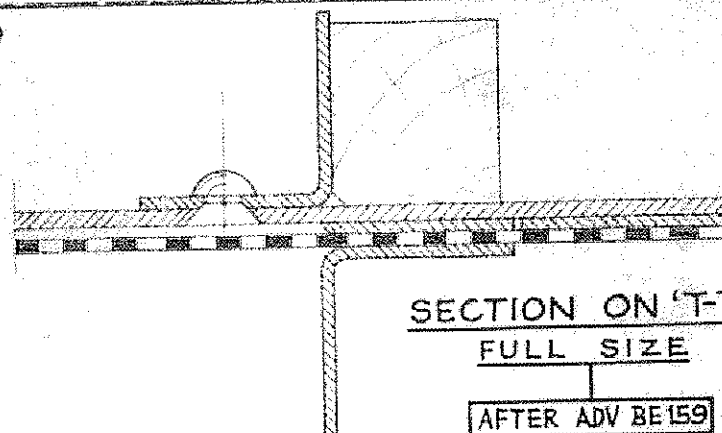
ISSUE 2.  
RT 3/1 & RT 152 E1  
IN ASS'D. ON COLY  
ADDED.

																				TITLE BULKHEAD STRUCTURE & TIMBER PACKINGS			
																				ISSUE NO			
																				MOD NO			
																				DATE			
																				DRAWN			
																				CHECKED			
																				PASSED			
																				ISSUE NO			
																				MOD NO			
																				DATE			
																				DRAWN			
																				CHECKED			
																				PASSED			
																				ISSUE NO			
																				MOD NO			
																				DATE			
																				DRAWN			
																				CHECKED			
																				PASSED			
																				ISSUE NO			
																				MOD NO			
																				DATE			
																				DRAWN			
																				CHECKED			
																				PASSED			
																				ISSUE NO			
																				MOD NO			
																				DATE			
																				DRAWN			
																				CHECKED			
																				PASSED			
																				ISSUE NO			
																				MOD NO			
																				DATE			
																				DRAWN			
																				CHECKED			
																				PASSED			
																				ISSUE NO			
																				MOD NO			
																				DATE			
																				DRAWN			
																				CHECKED			
																				PASSED			
																				ISSUE NO			
																				MOD NO			
																				DATE			
																				DRAWN			
																				CHECKED			
																				PASSED			
																				ISSUE NO			
																				MOD NO			
																				DATE			
																				DRAWN			
																				CHECKED			
																				PASSED			
																				ISSUE NO			
																				MOD NO			
																				DATE			
																				DRAWN			
																				CHECKED			
																				PASSED			
																				ISSUE NO			
																				MOD NO			
																				DATE			
																				DRAWN			
																				CHECKED			
																				PASSED			
																				ISSUE NO			
																				MOD NO			
																				DATE			
																				DRAWN			
																				CHECKED			
																				PASSED			
																				ISSUE NO			
																				MOD NO			
																				DATE			
																				DRAWN			
																				CHECKED			
																				PASSED			
																				ISSUE NO			
																				MOD NO			
																				DATE			
																				DRAWN			
																				CHECKED			
																				PASSED			
																				ISSUE NO			
																				MOD NO			
																				DATE			
																				DRAWN			
																				CHECKED			
																				PASSED			
																				ISSUE NO			
																				MOD NO			
																				DATE			
																				DRAWN			
																				CHECKED			
																				PASSED			
																				ISSUE NO			
																				MOD NO			
																				DATE			
																				DRAWN			
																				CHECKED			
																				PASSED			
																				ISSUE NO			
																				MOD NO			
																				DATE			
																				DRAWN			
																				CHECKED			
																				PASSED			
																				ISSUE NO			
																				MOD NO			
																				DATE			
																				DRAWN			
																				CHECKED			
																				PASSED			
																				ISSUE NO			
																				MOD NO			
																				DATE			
																				DRAWN			
																				CHECKED			
																				PASSED			
																				ISSUE NO			
																				MOD NO			
																				DATE			
																				DRAWN			
																				CHECKED			
																				PASSED			
																				ISSUE NO			
																				MOD NO			
																				DATE			
																				DRAWN			
																				CHECKED			
																				PASSED			
																				ISSUE NO			
																				MOD NO			
																				DATE			
																				DRAWN			
																				CHECKED			
																				PASSED			
																				ISSUE NO			
																				MOD NO			
																				DATE			
																				DRAWN			
																				CHECKED			
																				PASSED			
																				ISSUE NO			
																				MOD NO			
																				DATE			
																				DRAWN			
																				CHECKED			
																				PASSED			
																				ISSUE NO			
																				MOD NO			
																				DATE			
																				DRAWN			
																				CHECKED			
																				PASSED			
																				ISSUE NO			
																				MOD NO			
																				DATE			
																				DRAWN			
																				CHECKED			
																				PASSED			
																				ISSUE NO			
																				MOD NO			
																				DATE			
																				DRAWN			
																				CHECKED			
																				PASSED			
																				ISSUE NO			
																				MOD NO			
																				DATE			
																				DRAWN			
																				CHECKED			
																				PASSED			
																				ISSUE NO			
																				MOD NO			
																				DATE			
																				DRAWN			
																				CHECKED			
																				PASSED			
																				ISSUE NO			
																				MOD NO			
																				DATE			
																				DRAWN			
																				CHECKED			
																				PASSED			
																				ISSUE NO			
																				MOD NO			
																				DATE			
																				DRAWN			
																				CHECKED			
																				PASSED			
																				ISSUE NO			
																				MOD NO			
																				DATE			
																				DRAWN			
																				CHECKED			
																				PASSED			
																				ISSUE NO			
																				MOD NO			
																				DATE			
																				DRAWN			
																				CHECKED			
																				PASSED			
																				ISSUE NO			
																				MOD NO			
																				DATE			
																				DRAWN			
																				CHECKED			
																				PASSED			
																				ISSUE NO			
																				MOD NO			
																				DATE			
																				DRAWN			
																				CHECKED			
																				PASSED			
																				ISSUE NO			
																				MOD NO			
																				DATE			
																				DRAWN			
																				CHECKED			
																				PASSED			
																				ISSUE NO			
																				MOD NO			
																				DATE			
																				DRAWN			
																				CHECKED			
																				PASSED			
																				ISSUE NO			
																				MOD NO			
																				DATE			
																				DRAWN			
																				CHECKED			
																				PASSED			
																				ISSUE NO			
																				MOD NO			
																				DATE			
																				DRAWN			
																				CHECKED			
																				PASSED			
																				ISSUE NO			
																				MOD NO			
																				DATE			
																				DRAWN			
																				CHECKED			
																				PASSED			
																				ISSUE NO			
																				MOD NO			
																				DATE			
																				DRAWN			
																				CHECKED			

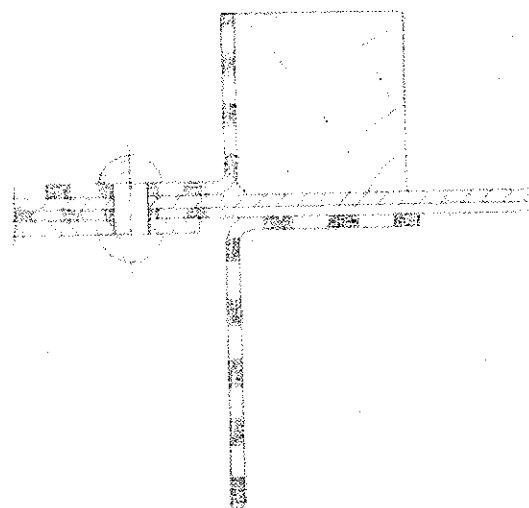
DRAWING NOT TO BE SCALED



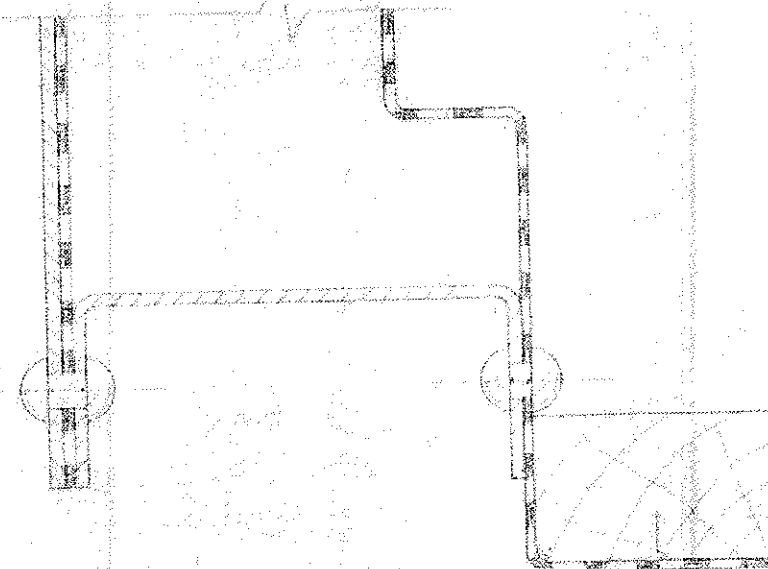
SECTION ON G-G  
FULL SIZE



SECTION ON 'T-T'  
FULL SIZE  
AFTER ADV BE 159



SECTION ON T-T  
FULL SIZE  
AFTER MOD 396



SECTION ON 'N-N'  
FULL SIZE

THIS DRAWING IS NOT  
REQUIRED FOR RT.8  
WHEN MOD. 298 IS EMBODIED.

THIS DRAWING IS  
REQUIRED FOR RT.8  
WHEN MOD. 396 IS EMBODIED.

ALTERATIONS

ISSUE 2  
NOTE RE. MOD. 298  
ADDED.

ISSUE 3:-  
SECTION T-T AFTER  
ADV BE 159 ADDED

TITLE BULKHEAD STRUCTURE & TIMBER PACKINGS ASSY

ISSUE N°	1	2	3
MOD. N°	396	298	BE 159
DATE	31.8.51	31.8.51	28.2.52
DRAWN	LP	LP	JCG
CHECKED	AB	AB	AVB
PASSED	EG	EG	
ISSUE N°			
MOD. N°			
DATE			
DRAWN			
CHECKED			
PASSED			

PROCESS SPEC. N° SEE SHEET 1

PART N°  
RT.002.EI  
SHEET 3.

ALL PARTS MUST BEAR OUR PART N°  
DATE LETTER AND MAKERS TRADE MARK

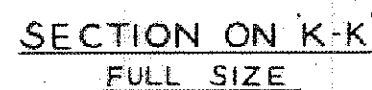
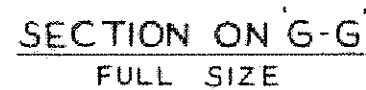
PART N°	DESCRIPTION	MATL	SPEC.	N° PER ASSY.	RT.8	RT.152.EI	TYPE	ASSD. ON	TYPE	ASSD. ON
RT.002.EI SHT. 3	BULKHEAD STRUCTURE & TIMBER PACKINGS ASSY									
⊕	MACHINED ALL OVER									
⊖	MACHINED GROUND									
	LIMITS TO NEWALL STANDARDS									
	B FOR HOLES P PUSH FIT X RUNNING FIT									
	F FORCE FIT D DRIVING FIT Y " "									
	DIMENSIONS WITHOUT LIMITS TO BE IN ACCORDANCE WITH L.T.E. DATA SHEET D.S.I.									



709/2(3)  
(2009-2010)

CAN BE INTRODUCED  
BEFORE THIS MOD.

## ALTERATIONS

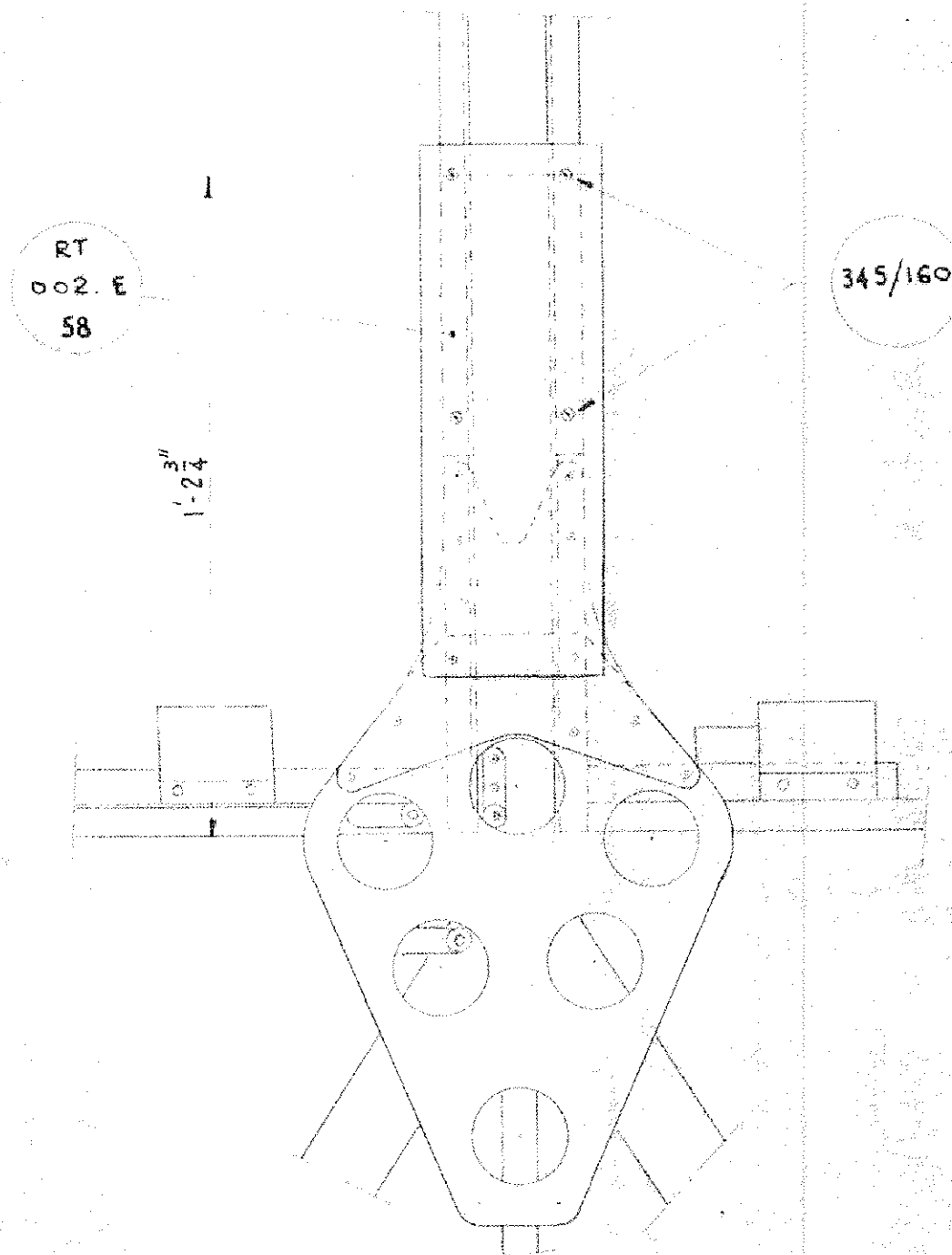


THIS DRAWING IS  
REQUIRED FOR RT.8  
WHEN MOD. 298 IS EMBODIED

RT.002.EI SHT. 4				BULKHEAD STRUCTURE & TIMBER PACKINGS ASSY				TITLE BULKHEAD STRUCTURE & TIMBER PACKINGS ASSY			
PART N <sup>o</sup>				DESCRIPTION				MATL. SPEC. N <sup>o</sup> PER ASSY.			
⊕ MACHINED ALL OVER ⊕ MACHINED GROUND				LIMITS TO NEWALL STANDARDS B FOR HOLES P PUSH FIT X RUNNING FIT F FORCE FIT D DRIVING FIT Y " "				DIMENSIONS WITHOUT LIMITS TO BE IN ACCORDANCE WITH L.T.E. DATA SHEET D.S.I.			
RT.8				RT.152.EI				TYPE ASS'D. ON TYPE ASS'D. ON			
DATE				DATE				DATE			
DRAWN				DRAWN				DRAWN			
CHECKED				CHECKED				CHECKED			
PASSED				PASSED				PASSED			
ISSUE N <sup>o</sup>				ISSUE N <sup>o</sup>				ISSUE N <sup>o</sup>			
MOD. N <sup>o</sup>				MOD. N <sup>o</sup>				MOD. N <sup>o</sup>			
PROCESS SPEC. N <sup>o</sup>				PROCESS SPEC. N <sup>o</sup>				PROCESS SPEC. N <sup>o</sup>			
PART N <sup>o</sup>				PART N <sup>o</sup>				PART N <sup>o</sup>			
RT.002.EI				RT.002.EI				RT.002.EI			
SHEET 4.				SHEET 4.				SHEET 4.			
ALL PARTS MUST BEAR OUR PART N <sup>o</sup>				ALL PARTS MUST BEAR OUR PART N <sup>o</sup>				ALL PARTS MUST BEAR OUR PART N <sup>o</sup>			
DATE LETTER AND MAKER'S TRADE MARK				DATE LETTER AND MAKER'S TRADE MARK				DATE LETTER AND MAKER'S TRADE MARK			

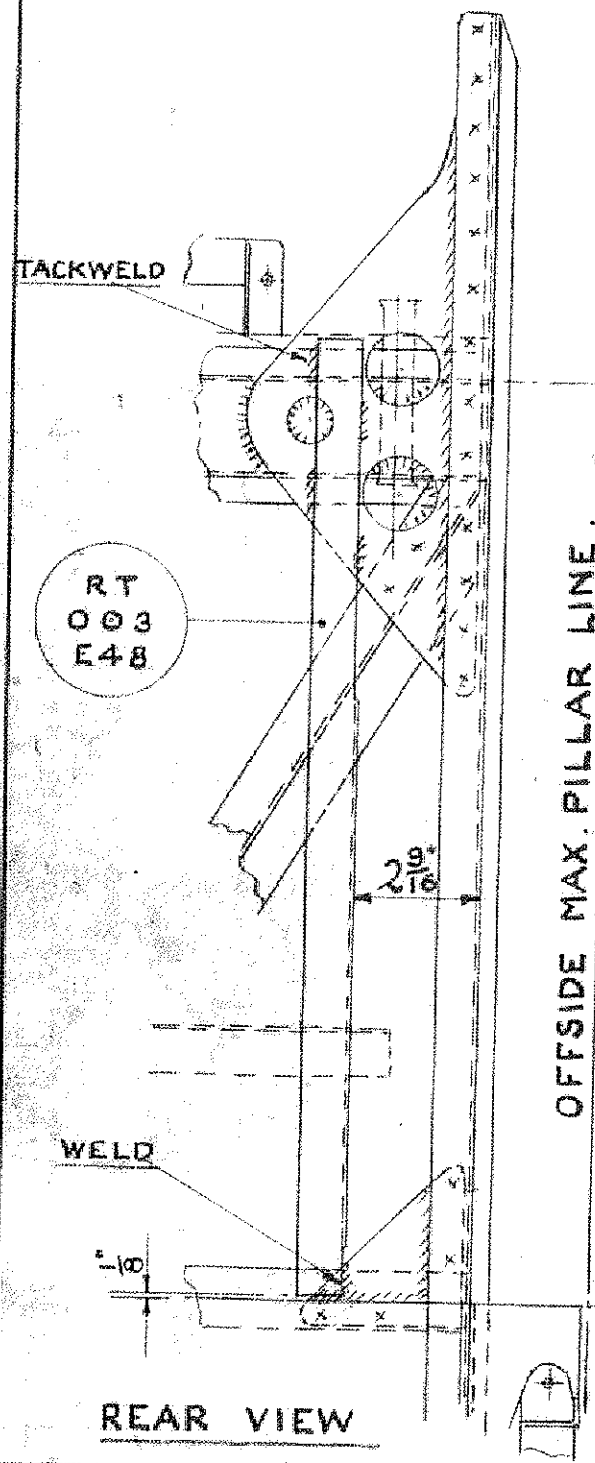
DRAWING NOT TO BE SCALED

ALTERATIONS  
ADVICE No BE.205



RT.002.E.1				BULKHEAD STRUCTURE				TITLE BULKHEAD & TIMBER STRUCTURE PACKINGS			
(SHEET 5)				PART NO				ISSUE NO			
DESCRIPTION				MATERIAL SPEC.				MOD. NO			
LIMITS TO NEWALL STANDARDS				DIMENSIONS WITHOUT LIMITS TO BE IN ACCORDANCE WITH L.T.E. DATA SHEET D.S.I.				DATE			
B FOR HOLES P PUSH FIT X RUNNING FIT F FORCE FIT D DRIVING FIT Y " "				RT 3 RT.001.E.1				DRAWN			
MACHINED ALL OVER MACHINED GROUND				TYPE ASSD.ON				CHECKED			
								PASSED			
								PROCESS SPEC NO			
								PART NO			
								RT.002.E.1			
								SHEET 5			
								ALL PARTS MUST BEAR OUR PART NO DATE, LETTER AND MAKERS TRADE MARK			

DRAWING NOT TO BE SCALED

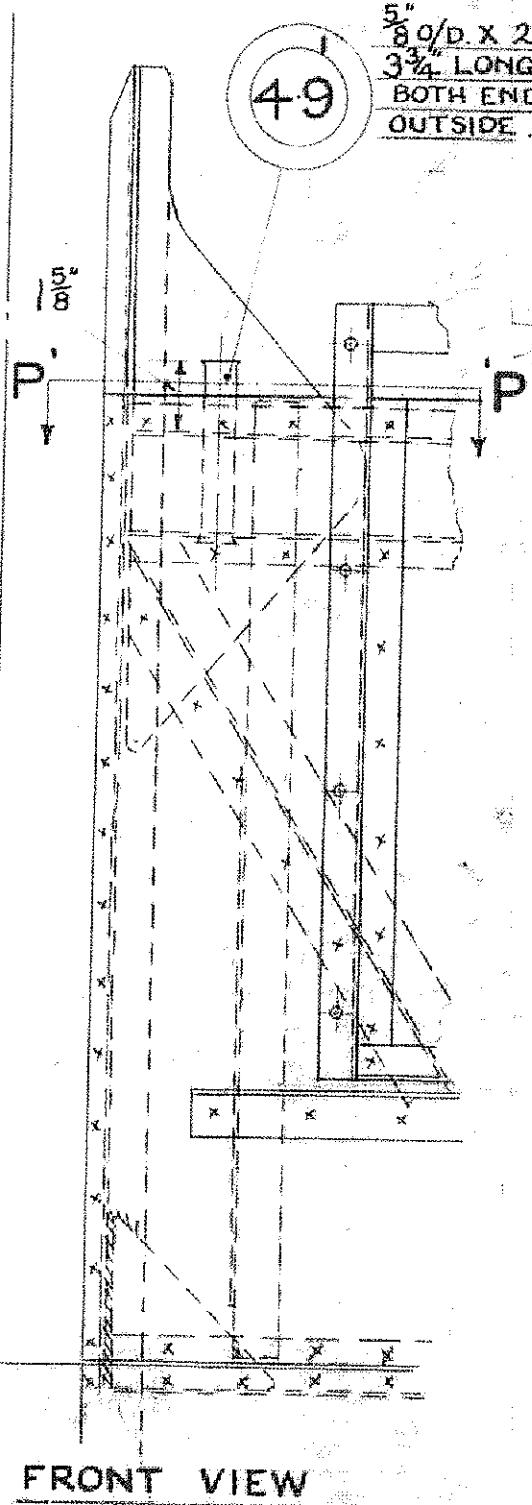


1 - 1/16 TO DATUM 'B'

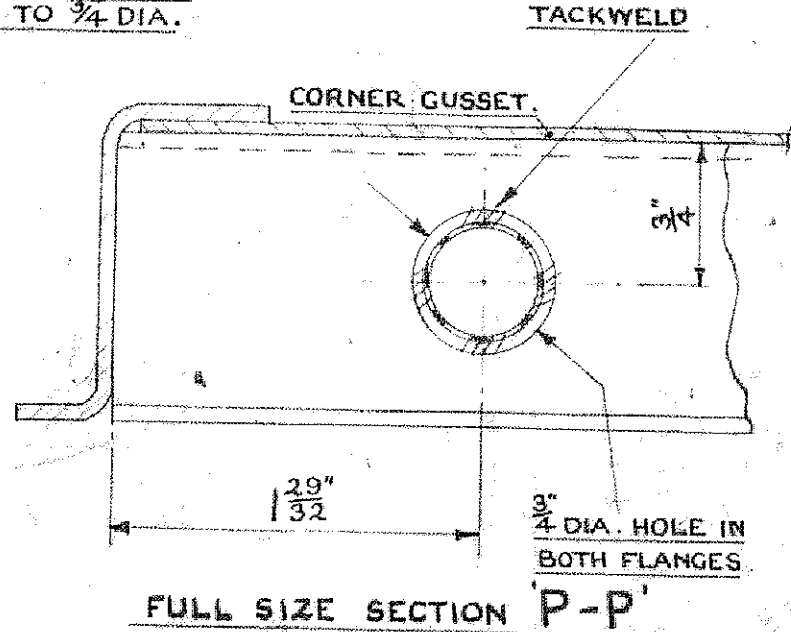
OFFSIDE MAX. PILLAR LINE.

DATUM C  
7 1/16

OFFSIDE MAX. PILLAR LINE. 7'-4"



5" O/D X 20 SWG. TUBE  
3 3/4" LONG. BELL MOUTH  
BOTH ENDS TO 3/4" DIA.  
OUTSIDE.



THIS DRAWING IS  
REQUIRED FOR RT 3  
WHEN MOD. 14/4 IS EMBODIED.

ALTERATIONS

RT 003 E.I. FRONT BULKHEAD STRUCTURE																					
PART NO		DESCRIPTION				MTL	SPEC.	NO PER ASSY													
⊕ MACHINED ALL OVER		LIMITS TO NEWALL STANDARDS				DIMENSIONS WITHOUT LIMITS TO BE IN ACCORDANCE WITH LPTB DATA SHEET D.S.1				RT3 AFTER MOD 14/4		RT 002 E1									
f MACHINED		B FOR HOLES P PUSH FIT X RUNNING FIT								TYPE		ASS'D ON		TYPE		ASS'D ON					
G GROUND		F FORCE FIT D DRIVING FIT Y " "																			

TITLE FRONT BULKHEAD STRUCTURE							
ISSUE NO	I					PROCESS SPEC NO	
MOD NO	14/4						
DATE	22.10.47						
DRAWN	BC						
CHECKED	F.						
PASSED							
ISSUE NO							
MOD NO							
DATE							
DRAWN							
CHECKED							
PASSED							

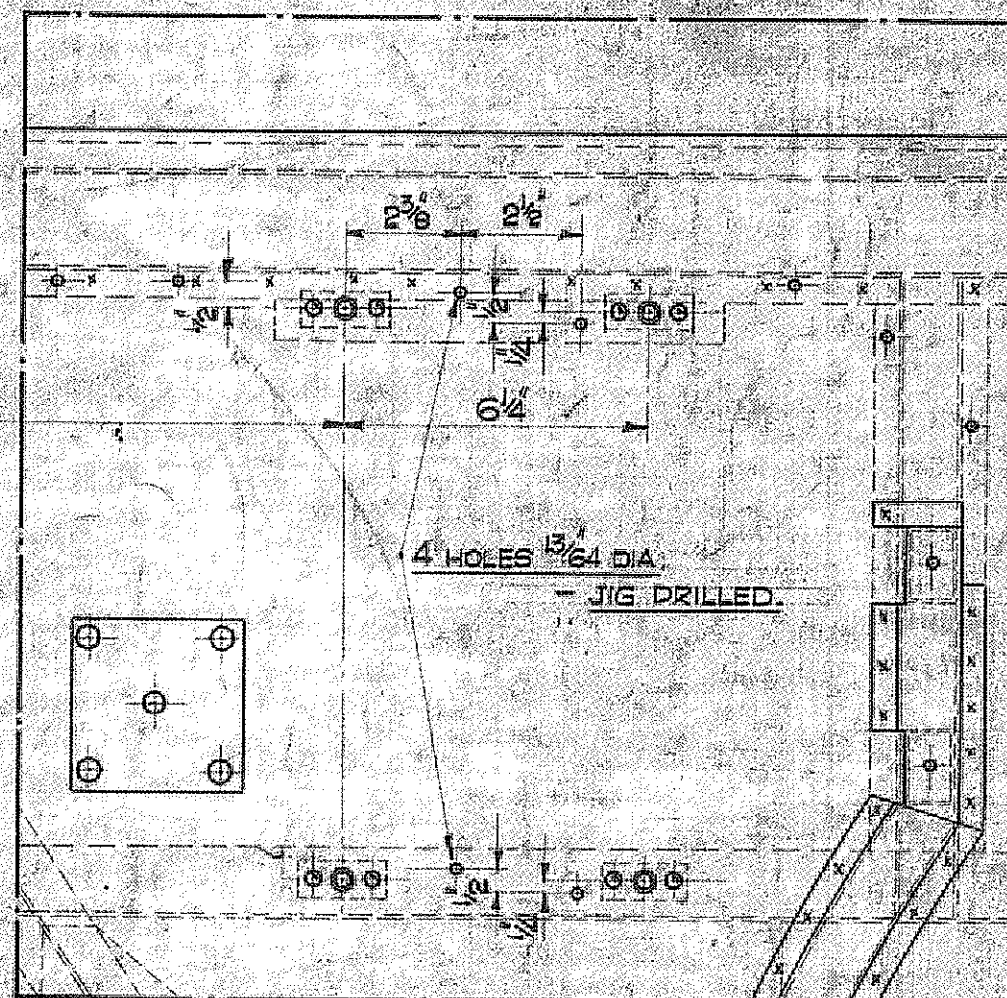
PART NO  
RT 003 E.I.  
SHT. 2  
ALL PARTS MUST BEAR OUR PART NO  
DATE LETTER & MAKERS TRADE MARK



DEPARTMENT OF THE CHIEF MECHANICAL ENGINEER (ROAD SERVICES)  
LITE CHISWICK WORKS, LONDON, W.4.

DRAWING NOT TO BE SCALED

OF BODY.



THIS DRAWING IS  
REQUIRED FOR R.T. 10  
WHEN MOD. 47. IS INCORPORATED

ALTERATIONS

ISSUE 2: BZ 216  
BODY CODE RT10  
WAS RT3.

FOR SCHEDULE - SEE SHEET 1.				TITLE FRONT BULKHEAD STRUCTURE			
RT.003.E.1. BULKHEAD STRUCTURE ASSY.				ISSUE NO. 1 2			
PART NO. DESCRIPTION				MOD. NO. MOD.47 BZ 216			
LIMITS TO NEWELL STANDARDS				DATE 25-11-47 12-8-58			
B FOR HOLES P PUSH FIT X RUNNING FIT				DRAWN CL. F.S.			
F FORCE FIT D DRIVING FIT Y				CHECKED CL.			
DIMENSIONS WITHOUT LIMITS TO BE IN ACCORDANCE WITH LITE DATA SHEET D.S.1.				PASSED			
RT.10 RT.002.E.1				ISSUE NO.			
TYPE ASSD ON TYPE ASSD ON				MOD. NO.			
				DATE			
				DRAWN			
				CHECKED			
				PASSED			

PROCESS SPEC NO.

PART NO. RT.003.E.1.

SHEET - 5

ALL PARTS MUST BEAR OUR PART NO. DATE LETTER & MAKERS TRADE MARK

ESB/30512/31  
3000 1/2 45



LAYOUT  
LAYOUT

1 HOLE  $\frac{13}{64}$ " DIA FOR  $\frac{3}{16}$ " BOLT  
- JIG DRILL AFTER ASSEMBLY

9 HOLES  $\frac{17}{64}$  DIA FOR  $\frac{1}{4}$ " BUNTS. - JIG DRILL AFTER ASSEMBLY.



MADE FROM SECTION 2171-414

0/5 OPPOSITE HAND

THIS DRAWING IS NOT REQUIRED  
WHEN ALT ADV BE216 IS  
EMBODIED.

[illegible]

## ALTERATIONS

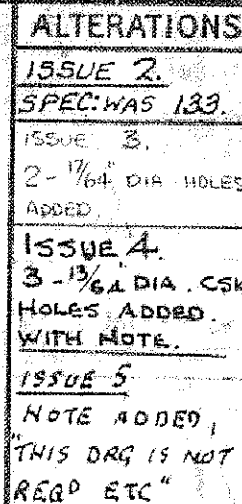
ISSUE 2.  
9 HOLES WAS 13  
4 BOTTOM HOLES  
DELETED

ISSUE 3

NOTE ADDED,

THIS ORC IS NOT  
REQD ETC"

DRAWING NOT TO BE SCALED

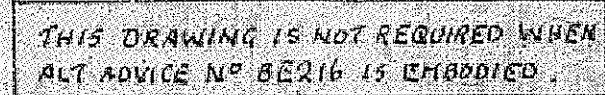


H 08/209/2 (3)  
 12/19 3-55



## LAYOUT

11-18/308/2/3  
3200-3-55



ISSUE 2  
SPEC. WAS 133  
ISSUE 3  
2- $\frac{1}{64}$ " DIA HOLES  
ADDED.  
ISSUE 4  
4- $\frac{1}{64}$ " DIA. CSK.  
HOLES ADDED  
WITH NOTE.

---

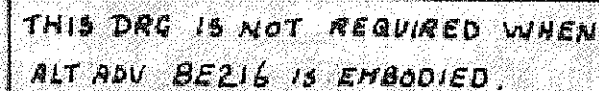
ISSUE 5  
NOTE ADDED,  
"THIS DRG IS NOT  
REQD ETC".

						TITLE MOUNTING PLATE 0/5														
						ISSUE NO. ALTN. NO. DATE DRAWN CHECKED PASSED					1 2 3 4 5					PROCESS SPEC. NO.				
						1 2 3 4 5					1 2 3 4 5					1 2 3 4 5				
						1 2 3 4 5					1 2 3 4 5					1 2 3 4 5				
						1 2 3 4 5					1 2 3 4 5					1 2 3 4 5				
						1 2 3 4 5					1 2 3 4 5					1 2 3 4 5				
						1 2 3 4 5					1 2 3 4 5					1 2 3 4 5				
						1 2 3 4 5					1 2 3 4 5					1 2 3 4 5				
						1 2 3 4 5					1 2 3 4 5					1 2 3 4 5				
						1 2 3 4 5					1 2 3 4 5					1 2 3 4 5				
						1 2 3 4 5					1 2 3 4 5					1 2 3 4 5				
						1 2 3 4 5					1 2 3 4 5					1 2 3 4 5				
						1 2 3 4 5					1 2 3 4 5					1 2 3 4 5				
						1 2 3 4 5					1 2 3 4 5					1 2 3 4 5				
						1 2 3 4 5					1 2 3 4 5					1 2 3 4 5				
						1 2 3 4 5					1 2 3 4 5					1 2 3 4 5				
						1 2 3 4 5					1 2 3 4 5					1 2 3 4 5				
						1 2 3 4 5					1 2 3 4 5					1 2 3 4 5				
						1 2 3 4 5					1 2 3 4 5					1 2 3 4 5				
						1 2 3 4 5					1 2 3 4 5					1 2 3 4 5				
						1 2 3 4 5					1 2 3 4 5					1 2 3 4 5				
						1 2 3 4 5					1 2 3 4 5					1 2 3 4 5				
						1 2 3 4 5					1 2 3 4 5					1 2 3 4 5				
						1 2 3 4 5					1 2 3 4 5					1 2 3 4 5				
						1 2 3 4 5					1 2 3 4 5					1 2 3 4 5				
						1 2 3 4 5					1 2 3 4 5					1 2 3 4 5				
						1 2 3 4 5					1 2 3 4 5					1 2 3 4 5				
						1 2 3 4 5					1 2 3 4 5					1 2 3 4 5				
						1 2 3 4 5					1 2 3 4 5					1 2 3 4 5				
						1 2 3 4 5					1 2 3 4 5					1 2 3 4 5				
						1 2 3 4 5					1 2 3 4 5					1 2 3 4 5				
						1 2 3 4 5					1 2 3 4 5					1 2 3 4 5				
						1 2 3 4 5					1 2 3 4 5					1 2 3 4 5				
						1 2 3 4 5					1 2 3 4 5					1 2 3 4 5				
						1 2 3 4 5					1 2 3 4 5					1 2 3 4 5				
						1 2 3 4 5					1 2 3 4 5					1 2 3 4 5				
						1 2 3 4 5					1 2 3 4 5					1 2 3 4 5				
						1 2 3 4 5					1 2 3 4 5					1 2 3 4 5				
						1 2 3 4 5					1 2 3 4 5					1 2 3 4 5				
						1 2 3 4 5					1 2 3 4 5					1 2 3 4 5				
						1 2 3 4 5					1 2 3 4 5					1 2 3 4 5				
						1 2 3 4 5					1 2 3 4 5					1 2 3 4 5				
						1 2 3 4 5					1 2 3 4 5					1 2 3 4 5				
						1 2 3 4 5					1 2 3 4 5					1 2 3 4 5				
						1 2 3 4 5					1 2 3 4 5					1 2 3 4 5				
						1 2 3 4 5					1 2 3 4 5					1 2 3 4 5				
						1 2 3 4 5					1 2 3 4 5					1 2 3 4 5				
						1 2 3 4 5					1 2 3 4 5					1 2 3 4 5				
						1 2 3 4 5					1 2 3 4 5					1 2 3 4 5				
						1 2 3 4 5					1 2 3 4 5					1 2 3 4 5				
						1 2 3 4 5					1 2 3 4 5					1 2 3 4 5				
						1 2 3 4 5					1 2 3 4 5					1 2 3 4 5				
						1 2 3 4 5					1 2 3 4 5					1 2 3 4 5				
						1 2 3 4 5					1 2 3 4 5					1 2 3 4 5				
						1 2 3 4 5					1 2 3 4 5					1 2 3 4 5				
						1 2 3 4 5					1 2 3 4 5					1 2 3 4 5				
						1 2 3 4 5					1 2 3 4 5					1 2 3 4 5				
						1 2 3 4 5					1 2 3 4 5					1 2 3 4 5				
						1 2 3 4 5					1 2 3 4 5					1 2 3 4 5				
						1 2 3 4 5					1 2 3 4 5					1 2 3 4 5				
						1 2 3 4 5					1 2 3 4 5					1 2 3 4 5				
						1 2 3 4 5					1 2 3 4 5					1 2 3 4 5				
						1 2 3 4 5					1 2 3 4 5					1 2 3 4 5				
						1 2 3 4 5					1 2 3 4 5					1 2 3 4 5				
						1 2 3 4 5					1 2 3 4 5					1 2 3 4 5				
						1 2 3 4 5					1 2 3 4 5					1 2 3 4 5				
						1 2 3 4 5					1 2 3 4 5					1 2 3 4 5				
						1 2 3 4 5					1 2 3 4 5					1 2 3 4 5				
						1 2 3 4 5					1 2 3 4 5					1 2 3 4 5				
						1 2 3 4 5					1 2 3 4 5					1 2 3 4 5				
						1 2 3 4 5					1 2 3 4 5					1 2 3 4 5				
						1 2 3 4 5					1 2 3 4 5					1 2 3 4 5				
						1 2 3 4 5					1 2 3 4 5					1 2 3 4 5				
						1 2 3 4 5					1 2 3 4 5					1 2 3 4 5				
						1 2 3 4 5					1 2 3 4 5					1 2 3 4 5				
						1 2 3 4 5					1 2 3 4 5					1 2 3				



## LAYOUT

88/509/2-3  
1200-3-16

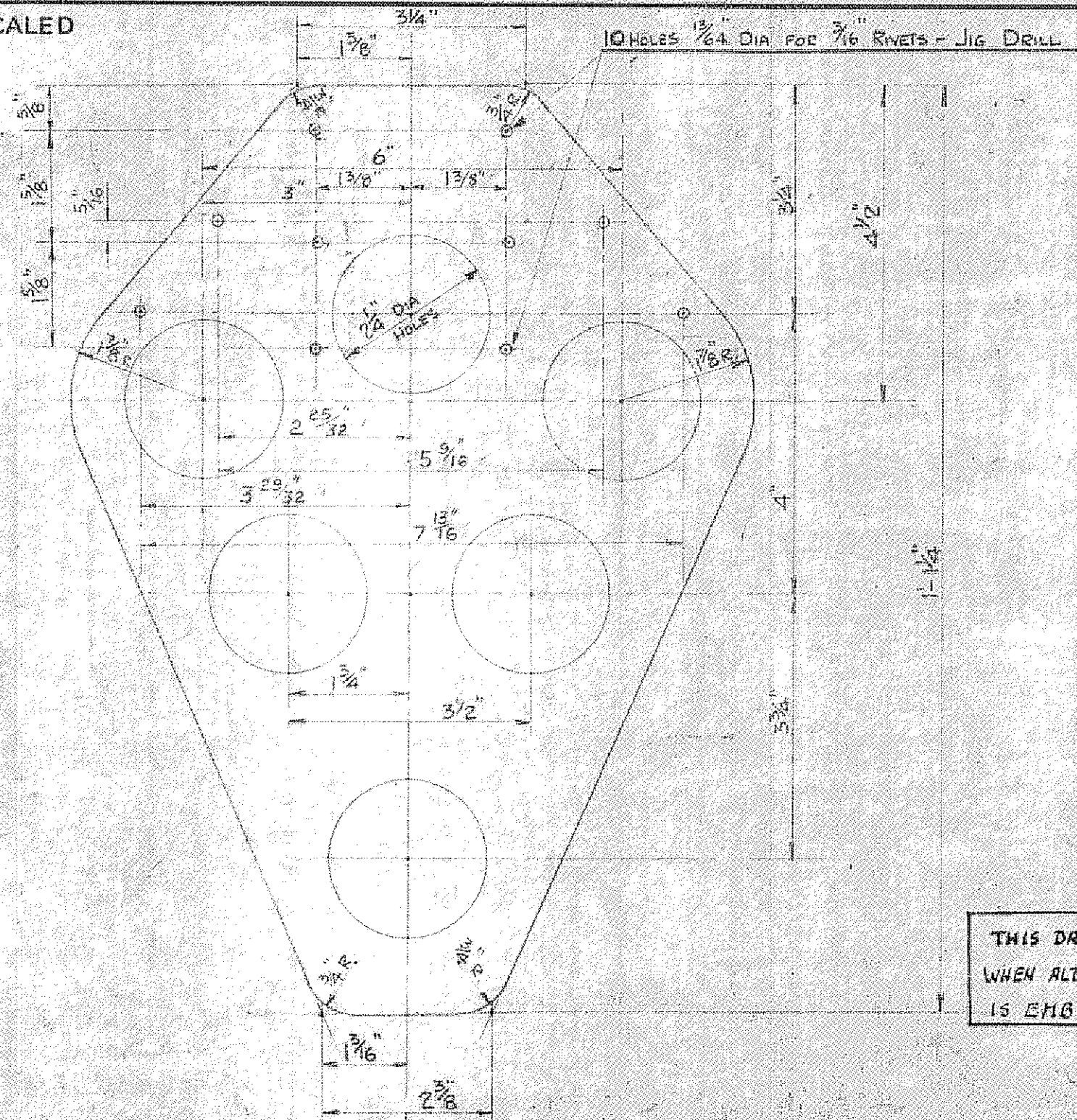


22

ISSUE 2.  
NOTE ADDED,  
"THIS DRG IS NOT  
REQD ETC"

										TITLE GUSSET PLATE									
										ISSUE NO ALTN NO DATE DRAWN CHECKED PASSED ISSUE NO ALTN NO DATE DRAWN CHECKED PASSED									
										1 2 BE216 11/9/55 10-5-56 H.S. F.S. R.S. H.S. F.S. R.S.									
										PROCESS SPEC. NO.									
										PART NO.									
										RT.003.E24									
RT.003.E24										GUSSET PLATE									
PART NO.										DESCRIPTION									
M.T.										SPEC.									
NO PER ASSY.																			
RT.003.E24										RT.003.E24									
TYPE										ASSD.ON									
TYPE										ASSD.ON									
MACHINED ALL OVER MACHINED GROUND										LIMITS TO NEWELL STANDARDS B FOR HOLES P PUSH FIT X RUNNING FIT F FORCE FIT D DRIVING FIT Y " "									
DIMENSIONS WITHOUT LIMITS TO BE IN ACCORDANCE WITH L.P.T.B. DATA SHEET DSI										RT.003.E24 RT.003.E24									
ALL PARTS MUST BEAR OUR PART NO. DATE LETTER & MAKERS TRADE MARK																			

DRAWING NOT TO BE SCALED



# ALTERATIONS

ISSUE 2  
4 HOLES 1/64 DIA.  
ADDED WITH DIM'S  
5/16, 2 25/32, 5 9/16  
3 25/32, 7 13/16  
NOTE - 10 HOLES  
WAS '6 HOLES'

ISSUE 3  
NOTE ADDED,  
'THIS DRG IS NOT  
REQD ETC'

THIS DRAWING IS NOT REQUIRED  
WHEN ALT ADVICE NO BE216  
IS EMBODIED.

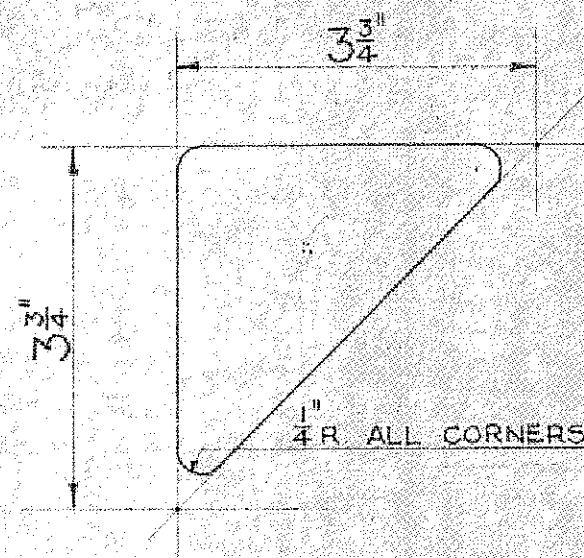
16 SW.G. 25

LAYOUT

RT.003.E25				GUSSET PLATE				M.S. 133			
PART NO				DESCRIPTION				MTL SPEC.			
⊕ MACHINED ALL OVER				LIMITS TO NEWELL STANDARDS				DIMENSIONS WITHOUT LIMITS TO BE IN ACCORDANCE WITH L.P.T.B. DATA SHEET DSI			
/ MACHINED				B FOR HOLES P PUSH FIT X RUNNING FIT				RT3 RT.003.E1			
G GROUND				F FORCE FIT D DRIVING FIT Y				TYPE ASSD.ON TYPE ASSD.ON			
TITLE				GUSSET PLATE				ISSUE NO			
ALTN. NO				—				MOD 35 BE216			
DATE				12/9/45				27.5.47 10.5.46			
DRAWN				HIS. LM				F.S.			
CHECKED				R.A.S.				F.S.			
PASSED				L				CG			
ISSUE NO				—				PROCESS SPEC. NO			
ALTN. NO				—				PART NO			
DATE				—				RT.003.E25			
DRAWN				—				ALL PARTS MUST BEAR OUR PART NO.			
CHECKED				—				DATE LETTER & MAKER'S TRADE MARK			
PASSED				—							



DRAWING NOT TO BE SCALED



THIS DRAWING IS NOT REQUIRED WHEN  
ALT ADV N° BE 216 IS EMBODIED.

14 S.W.G.

26

THIS PART PREVIOUSLY KNOWN AS PART N° BE.10233.

LAYOUT

				TITLE				GUSSET PLATE			
				ISSUE NO				PROCESS SPEC. N°			
				ALTN. NO							
				DATE				12-7-45			
				DRAWN				H.S.			
				CHECKED				H.S.			
				PASSED							
				ISSUE NO							
				ALTN. NO							
				DATE							
				DRAWN							
				CHECKED							
				PASSED							
RT.003.E26		GUSSET PLATE		M.S.		133		PART N°		RT.003.E26	
PART N°		DESCRIPTION		MTL		SPEC.		N° PER ASSY.			
⊕ MACHINED ALL OVER		LIMITS TO NEWELL STANDARDS		DIMENSIONS WITHOUT LIMITS TO BE IN ACCORDANCE WITH L.P.T.B. DATA SHEET DSI		RT3		RT.003.E1			
⊕ MACHINED		B FOR HOLES P PUSH FIT X RUNNING FIT				TYPE		ASSD.ON		TYPE ASSD.ON	
⊕ GROUND		F FORCE FIT D DRIVING FIT Y									

ALL PARTS MUST BEAR OUR PART N°  
DATE LETTER & MAKER'S TRADE MARK

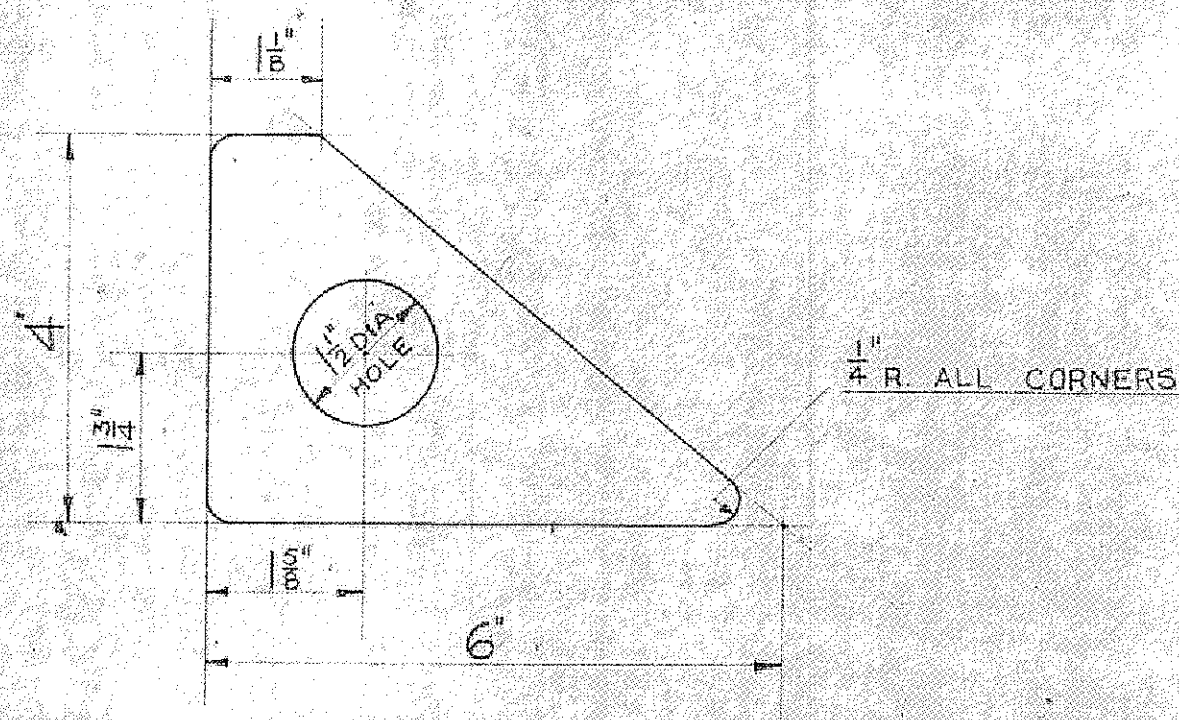
ALTERATIONS  
ISSUE 2.  
NOTE ADDED,  
"THIS DRG IS NOT  
REQD ETC"

DRAWING NOT TO BE SCALED

ALTERATIONS

ISSUE 2.

NOTE ADDED,  
"THIS DRG IS NOT  
REQD, ETC"



THIS DRAWING IS NOT REQUIRED WHEN  
ALT ADV NO BE 216 IS EMBODIED.

14 S.W.G.

27

THIS PART PREVIOUSLY KNOWN AS PART NO BE. 10231.

LAYOUT

TITLE					GUSSET PLATE				
RT.003.E 27	GUSSET PLATE	M. S.	133		ISSUE NO	1	2		
PART NO	DESCRIPTION	MTL	SPEC.	NO PER ASSY.	ALTN. NO		BE 216		
⊕ MACHINED ALL OVER	LIMITS TO NEWALL STANDARDS	DIMENSIONS WITHOUT LIMITS TO BE IN ACCORDANCE WITH L.P.T.B. DATA SHEET DSI			DATE	12-7-45	10-5-56		
f MACHINED	B FOR HOLES P PUSH FIT X RUNNING FIT	RT3 RT.003.EI			DRAWN	TIG	F.S.		
G GROUND	F FORCE FIT D DRIVING FIT-Y	TYPE ASSD.ON TYPE ASSD.ON			CHECKED	HIS.	FS		
					PASSED				
					ISSUE NO				
					ALTN. NO				
					DATE				
					DRAWN				
					CHECKED				
					PASSED				
					PART NO				
					RT.003.E27				
					ALL PARTS MUST BEAR OUR PART NO DATE LETTER & MAKERS TRADE MARK				



LAYOUT  
LAYOUT

[illegible]

**ISSUE 2.**

NOTE ADDED,  
"THIS DRG IS NOT  
REQD. ETC"

THIS DRAWING IS NOT REQUIRED WHEN  
ALT ADV BE 216 IS EMBODIED.

N/S AS DRAWN

25

16 S.W. 6

O/S OPPOSITE HAND

20

2 HOLES  $1\frac{3}{16}$ " DIA FOR  $\frac{3}{16}$ " RIVETS  
DRILL ON ASSEMBLY.

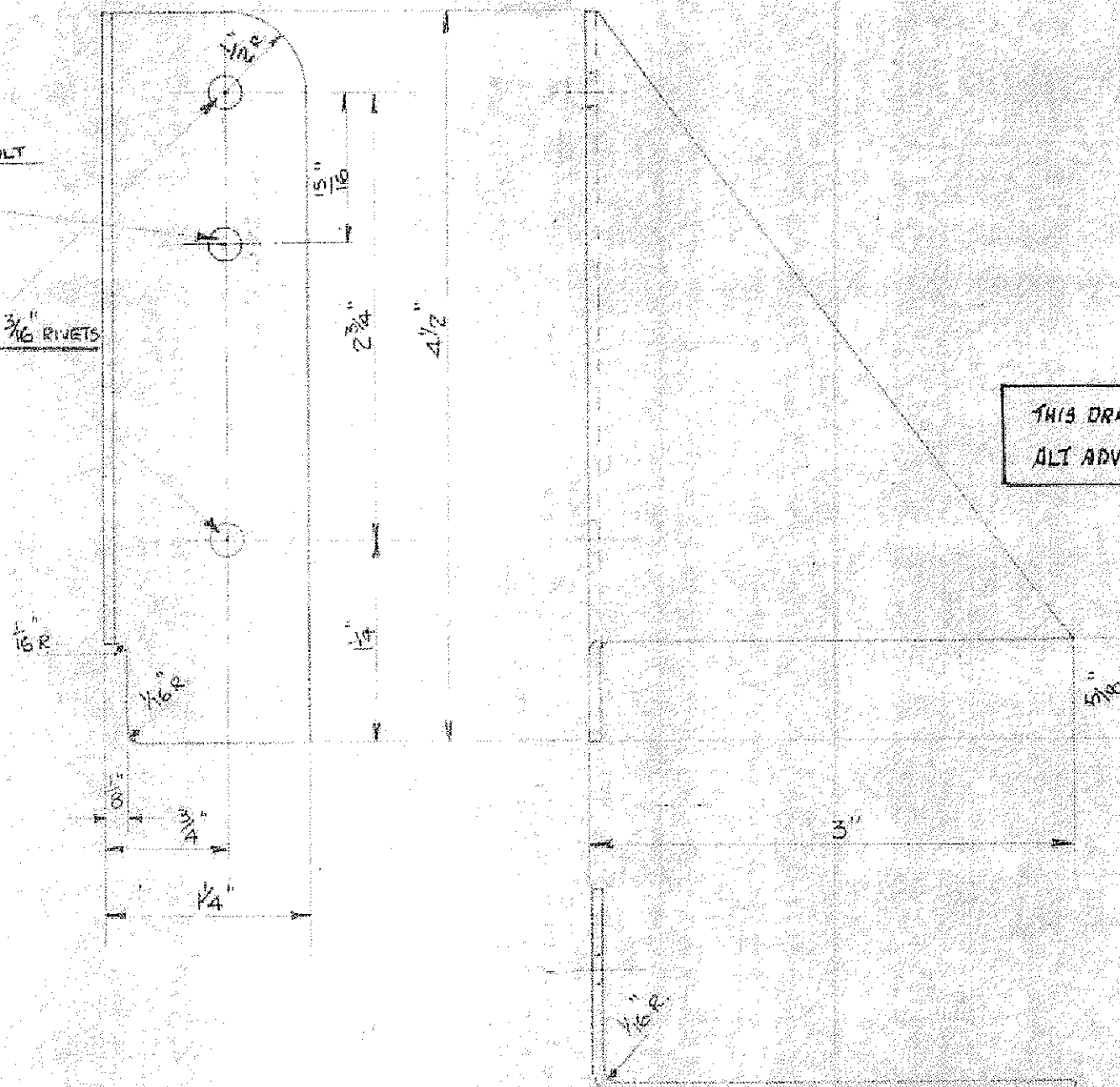
				TITLE				GUSSET BRACKET			
				ISSUE NO				1			
				ALTN. NO				2			
				DATE				13-7-45			
				DRAWN				J.M.			
				CHECKED				H.S.			
				PASSED				J.			
				ISSUE NO				PROCESS SPEC. NO			
				ALTN. NO							
				DATE							
				DRAWN							
				CHECKED							
				PASSED							
				ISSUE NO				PART NO			
				ALTN. NO				RT.003.E28			
				DATE				RT.003.E29			
				DRAWN							
				CHECKED				ALL PARTS MUST BEAR OUR PART NO			
				PASSED				DATE LETTER & MAKER'S TRADE MARK			



DRAWING NOT TO BE SCALED

1 HOLE  $\frac{13}{16}$ " DIA FOR  $\frac{3}{16}$ " BOLT  
JIG DRILL

2 HOLES  $\frac{13}{16}$ " DIA FOR  $\frac{3}{16}$ " RIVETS  
JIG DRILL



THIS DRAWING IS NOT REQUIRED WHEN  
ALT ADV N° BE216 IS EMBODIED

N/S AS DRAWN

30

16 S.W.G

O/S OPPOSITE HAND

31

LAYOUT  
LAYOUT

RT.003.E 30	GUSSET PLATE N/S	M.S.	133	
RT.003.E 31	GUSSET PLATE O/S	M.S.	133	
PART N°	DESCRIPTION	M.T.	SPEC.	N° PER ASSY.
⊕	MACHINED ALL OVER	LIMITS TO NEWELL STANDARDS DIMENSIONS WITHOUT LIMITS TO BE IN ACCORDANCE WITH L.P.T.B. DATA SHEET DSI		
f	MACHINED			
G	GROUND			
		RT3	RT.003.E1	
		TYPE	ASSD.ON	TYPE
				ASSD.ON

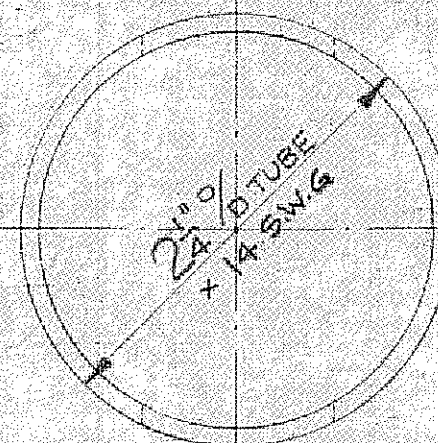
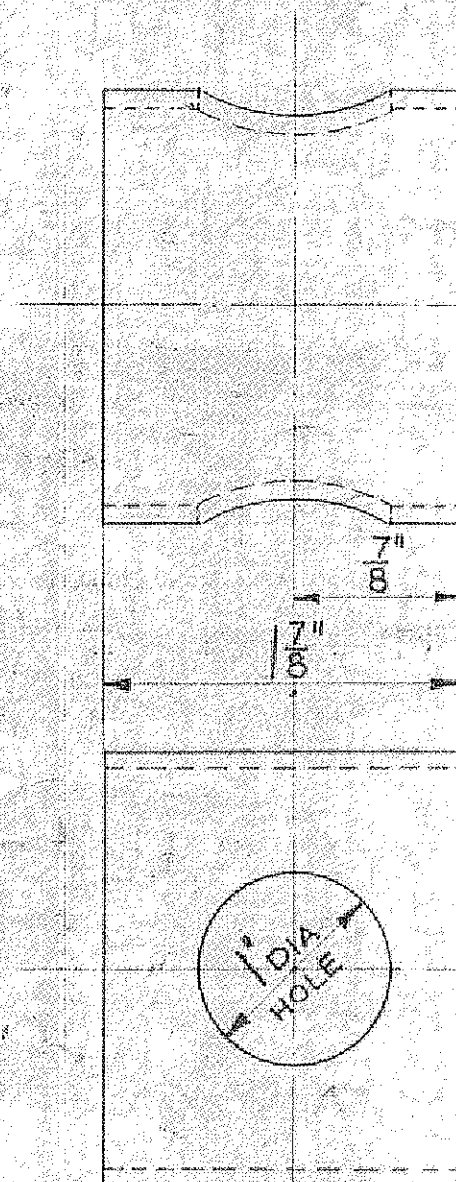
TITLE									
GUSSET PLATE									
ISSUE N°	1	2							
ALT. N°		BE216							
DATE	2/9/45	10-5-51							
DRAWN	H.S.	F.S.							
CHECKED	R.H.S.	T.S.							
PASSED									
ISSUE N°									
ALT. N°									
DATE									
DRAWN									
CHECKED									
PASSED									
PROCESS SPEC. N°									
PART N°									
RT.003.E 30									
RT.003.E 31									
ALL PARTS MUST BEAR OUR PART N°									
DATE LETTER & MAKERS TRADE MARK									

ALTERATIONS

ISSUE 2.

NOTE ADDED,  
"THIS DRG IS NOT  
REQD ETC"

DRAWING NOT TO BE SCALED



# ALTERATIONS

ISSUE 2.  
LAYOUT DELETED  
IN SCHEDULE.  
ISSUE 3  
/N ASSEM ON  
COLUMN,  
RT003 EI NOW  
FOR BEFORE  
BE216.  
ASSY NO FOR  
RT6 ADDED.

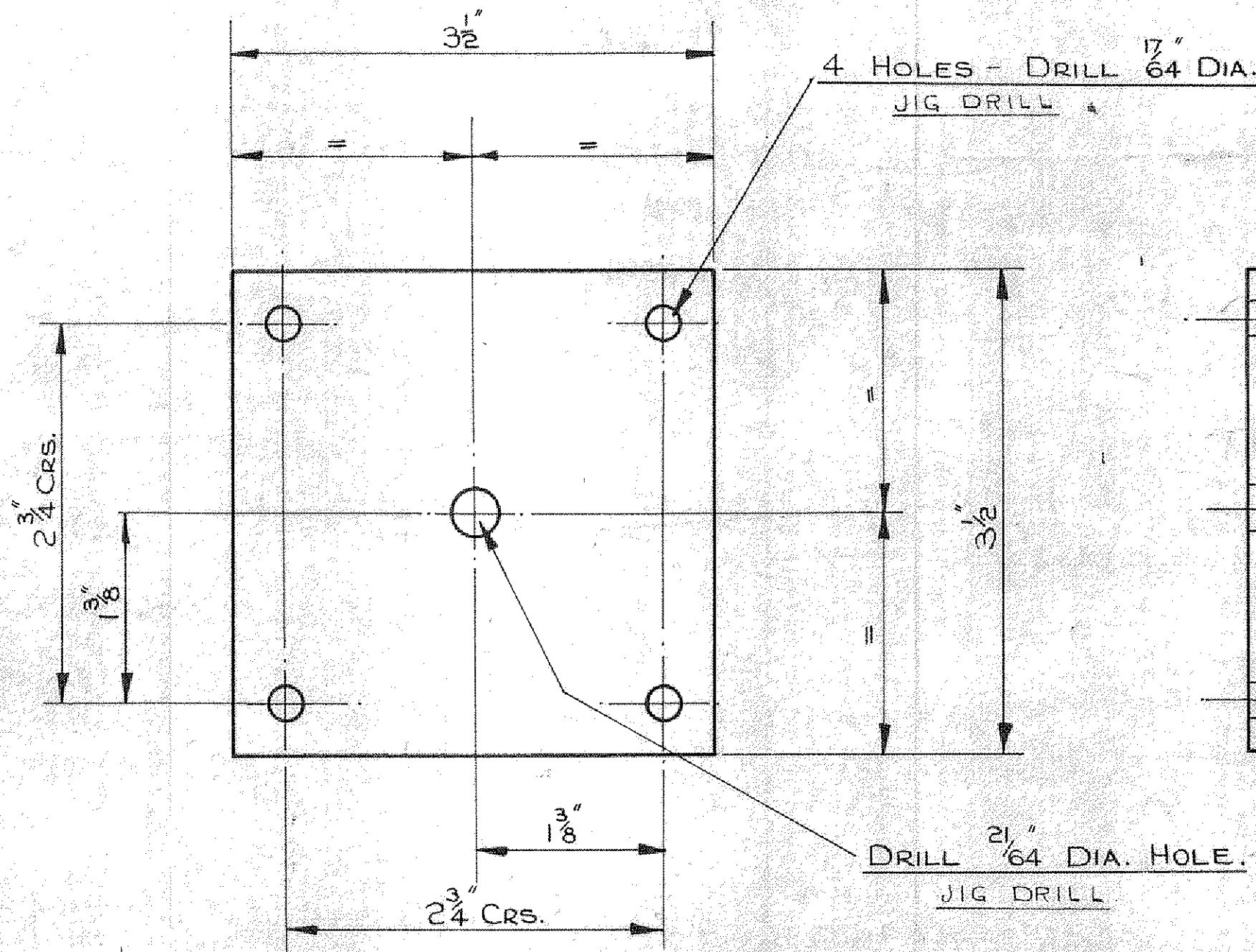
32

THIS PART PREVIOUSLY KNOWN AS PART NO BE.18311.

					TITLE					TUBE				



DRAWING NOT TO BE SCALED



# ALTERATIONS

ISSUE 2.  
SPEC. WAS N°8  
ISSUE 3.  
IN ASSD ON COLUMN,  
RT 003 EI NOW 'BEFORE  
MOD 298. RT 329 EI  
ADDED 'AFTER MOD 298'.  
ISSUE 4.  
IN ASSEM ON COL,  
ASSY NOS  
RT 003 EI &  
RT 329 EI, NOW  
FOR BEFORE BE 216.  
ASSEM ON NO  
FOR RT 3/4  
ADDED.

TRACED FROM AND PREVIOUSLY KNOWN AS 'BE. 11543

## TITLE STIFFENER PLATE-BONNET PROP.

ISSUE NO	1.	2.	3.	4.	PROCESS SPEC. NO
ALTN. NO		MOD 1	298	BE 216	
DATE	3.10.45	18.12.45	10.9.51	11.5.56	
DRAWN				F.S.	
CHECKED					
PASSED					
ISSUE NO					
ALTN. NO					
DATE					
DRAWN					
CHECKED					
PASSED					

PROCESS SPEC. NO

PART NO

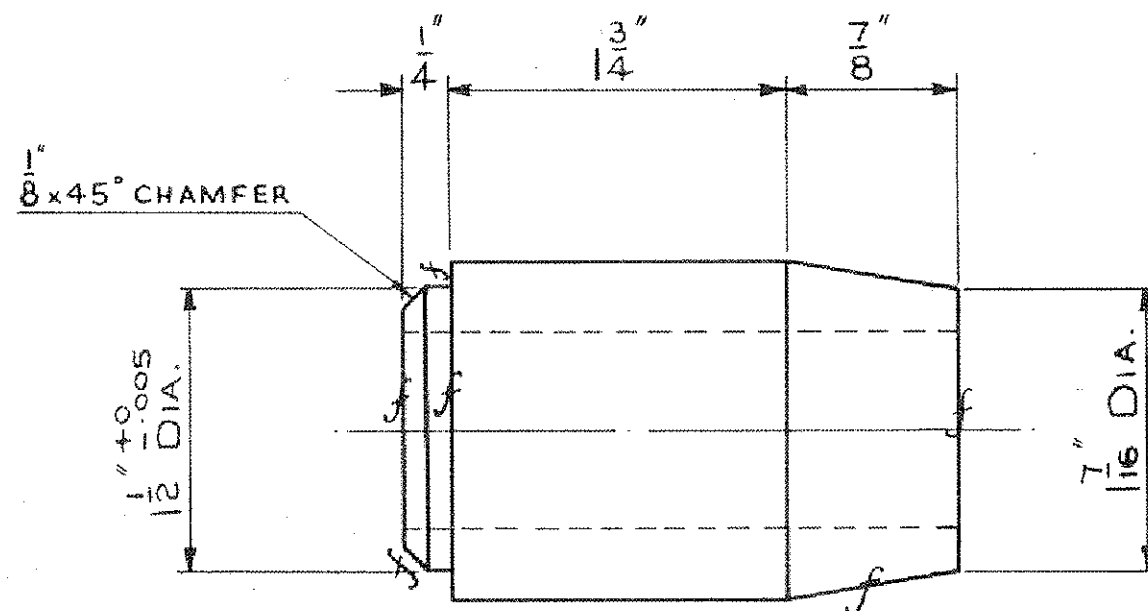
RT 003 E 35

ALL PARTS MUST BEAR OUR PART NO  
DATE LETTER & MAKER'S TRADE MARK

LAYOUT

RT 003 E 35	STIFFENER PLATE	STEEL	N°133	RT 3/4	RV 4216
PART NO	DESCRIPTION	MTL	SPEC.	NO PER ASSY.	RT 329 EI
⊕	MACHINED ALL OVER	LIMITS TO NEWELL STANDARDS			
⊕	MACHINED	DIMENSIONS WITHOUT LIMITS TO BE IN ACCORDANCE WITH L.P.T.B. DATA SHEET DSI			
G	GROUND	TYPE ASSD.ON			

DRAWING NOT TO BE SCALED



# ALTERATIONS

ISSUE 2.  
1/8" x 45° CHAMFER  
ADDED.  
PT. N° RT.463.E1 ADDED  
TO ASS'D ON COLUMN  
AFTER ADV. BE.216.

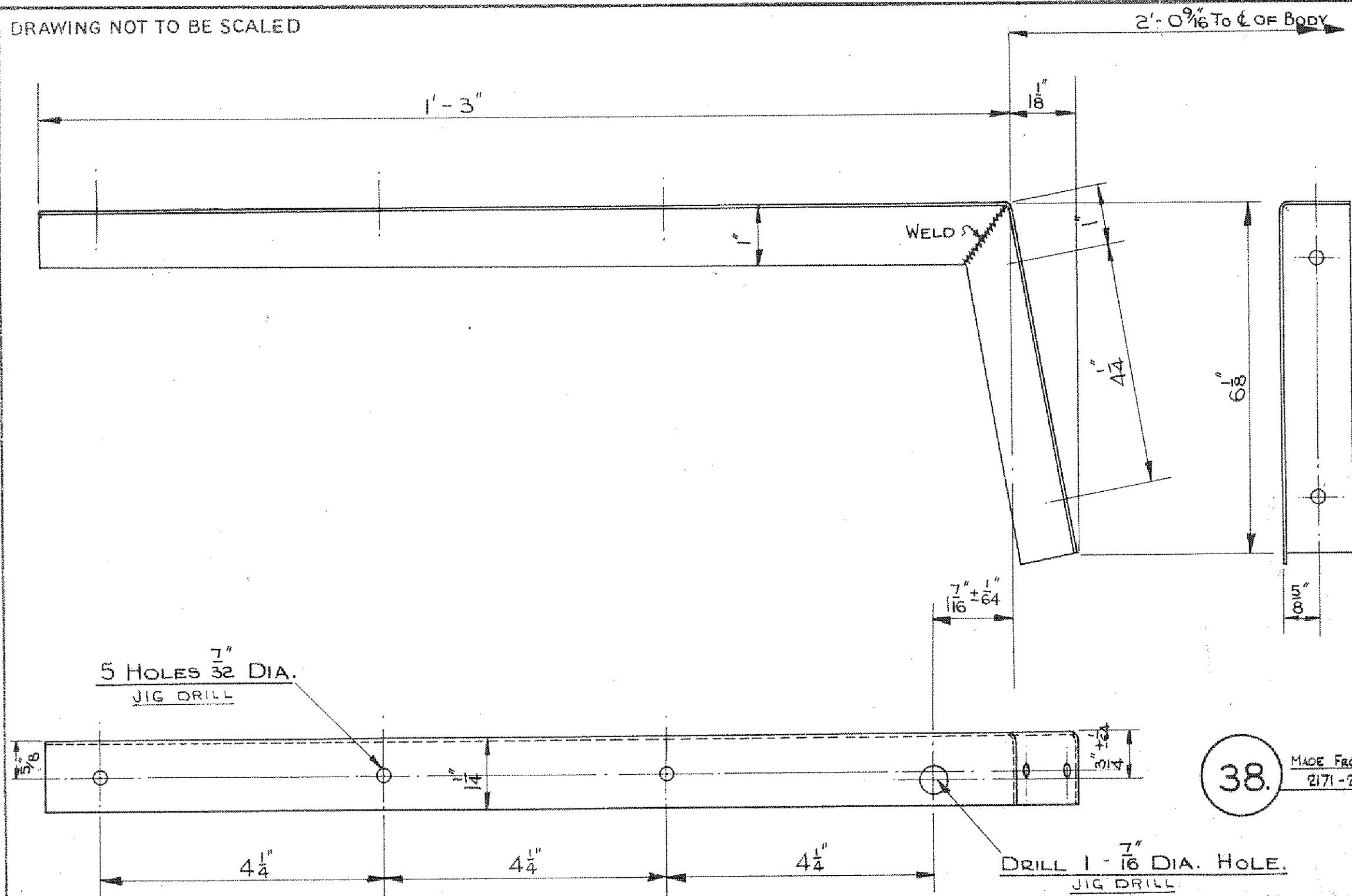
ISSUE 3  
IN ASS'D ON COLUMN  
RT 003 E1 MARKED  
BEFORE ADV. BE.216.

37.

TRACED FROM AND PREVIOUSLY KNOWN AS BE.13206

TITLE DOWEL.																																																																																	
<table border="1"> <tr> <td>ISSUE NO</td> <td>1</td> <td>2</td> <td>3</td> <td></td> <td></td> </tr> <tr> <td>ALTN. NO</td> <td></td> <td>BE.216</td> <td>BE.216</td> <td></td> <td></td> </tr> <tr> <td>DATE</td> <td>12.10.45</td> <td>14.3.56</td> <td>14.5.56</td> <td></td> <td></td> </tr> <tr> <td>DRAWN</td> <td></td> <td>LA</td> <td>LA</td> <td></td> <td></td> </tr> <tr> <td>CHECKED</td> <td></td> <td>F</td> <td>13</td> <td></td> <td></td> </tr> <tr> <td>PASSED</td> <td></td> <td>53</td> <td>13</td> <td></td> <td></td> </tr> <tr> <td>ISSUE NO</td> <td></td> <td></td> <td></td> <td></td> <td></td> </tr> <tr> <td>ALTN. NO</td> <td></td> <td></td> <td></td> <td></td> <td></td> </tr> <tr> <td>DATE</td> <td></td> <td></td> <td></td> <td></td> <td></td> </tr> <tr> <td>DRAWN</td> <td></td> <td></td> <td></td> <td></td> <td></td> </tr> <tr> <td>CHECKED</td> <td></td> <td></td> <td></td> <td></td> <td></td> </tr> <tr> <td>PASSED</td> <td></td> <td></td> <td></td> <td></td> <td></td> </tr> </table>										ISSUE NO	1	2	3			ALTN. NO		BE.216	BE.216			DATE	12.10.45	14.3.56	14.5.56			DRAWN		LA	LA			CHECKED		F	13			PASSED		53	13			ISSUE NO						ALTN. NO						DATE						DRAWN						CHECKED						PASSED					
ISSUE NO	1	2	3																																																																														
ALTN. NO		BE.216	BE.216																																																																														
DATE	12.10.45	14.3.56	14.5.56																																																																														
DRAWN		LA	LA																																																																														
CHECKED		F	13																																																																														
PASSED		53	13																																																																														
ISSUE NO																																																																																	
ALTN. NO																																																																																	
DATE																																																																																	
DRAWN																																																																																	
CHECKED																																																																																	
PASSED																																																																																	
PROCESS SPEC. N°																																																																																	
PART N°																																																																																	
RT.003.E37																																																																																	
ALL PARTS MUST BEAR OUR PART N° DATE LETTER & MAKERS' TRADE MARK																																																																																	
RT.003 E.37	DOWEL	M.S.	N°7																																																																														
PART N°	DESCRIPTION	MTL	SPEC.	NO PER ASSY.	RT.3 AFTER ADV. BE.216	RT.463.E1																																																																											
⊕ MACHINED ALL OVER f MACHINED G GROUND	LIMITS TO NEWELL STANDARDS B FOR HOLES P PUSH FIT X RUNNING FIT F FORCE FIT D DRIVING FIT Y " "	DIMENSIONS WITHOUT LIMITS TO BE IN ACCORDANCE WITH L.P.T.B. DATA SHEET DSI		RT.3 BEFORE ADV. BE.216	RT.003.E1																																																																												
					TYPE	ASSD.ON	TYPE	ASSD.ON																																																																									

DRAWING NOT TO BE SCALED



# ALTERATIONS

## ISSUE 2.

5/8" DIA. AT EXTREME  
L/H END OF PLATE  
WAS FROM C/O OF HOLE  
TO INSIDE EDGE OF  
FLANGE.

## ISSUE 3.

IN ASSD ON COL. P/N:  
RT.003 E1 NOW BEFORE  
MOD 298. P/N: RT.314 E1  
ADDED AFTER MOD 298.

## ISSUE 4.

IN ASSEM ON COL,  
ASSY NOS -  
RT003 E1 &  
RT314 E1 NOW  
FOR BEFORE BE216

ASSEM ON NO FOR  
RT3/4 ADDED.

LAYOUT.

RT. 003. E. 38.	O.S. WHEELARCH SUPPORT ANGLE	M.S.	133.
PART NO	DESCRIPTION	MTL	SPEC.
MACHINED ALL OVER	LIMITS TO NEWELL STANDARDS	DIMENSIONS WITHOUT LIMITS TO BE IN ACCORDANCE WITH LPT.B. DATA SHEET DSI	
MACHINED GROUND	B FOR HOLES P PUSH FIT X RUNNING FIT F FORCE FIT D DRIVING FIT Y " "		

RT3/4	RV9216.
RT8 AFTER MOD. 298	RT. 314. E1
RT3 BEFORE MOD. 298	RT. 003. E. 1.
TYPE	ASSD.ON
TYPE	ASSD.ON

## TITLE O.S. WHEELARCH SUPPORT ANGLE - FRONT BULK HEAD.

ISSUE NO	1.	2.	3.	4.
ALTN. NO		Mod 1	298	BE216
DATE	3.10.45	4.2.47	16.10.51	11.5.56
DRAWN			2 M	F.S.
CHECKED				
PASSED				
ISSUE NO				
ALTN. NO				
DATE				
DRAWN				
CHECKED				
PASSED				

PROCESS SPEC. NO	
PART NO	
RT. 003 E 38.	
ALL PARTS MUST BEAR OUR PART NO DATE LETTER & MAKERS TRADE MARK	



## LAYOUT

15-30/309/2(3)  
1200-3-44

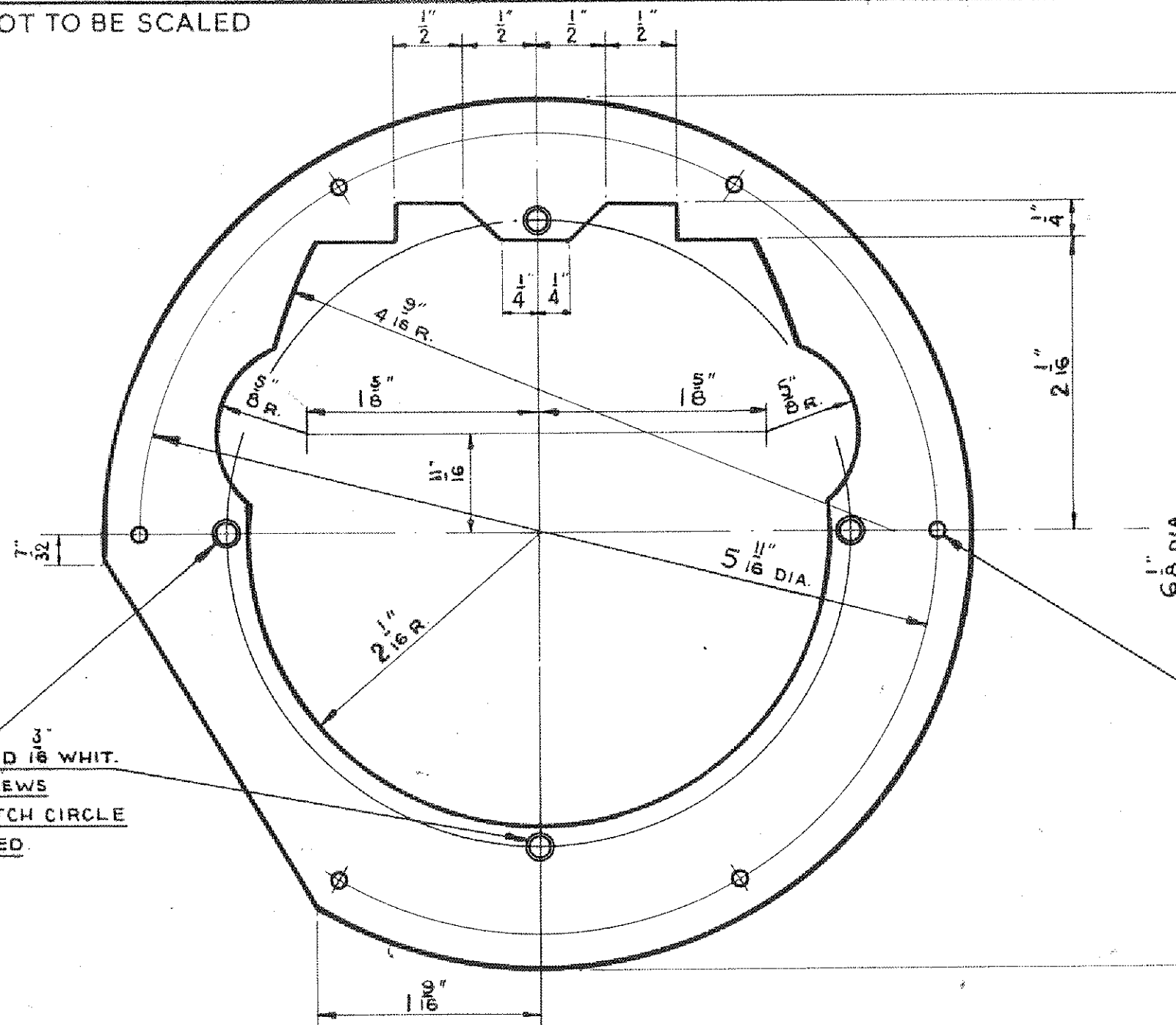


ASSEM ON NO  
FOR RT3/4  
90DED

										TITLE SUPPORT ANGLE									
										ISSUE NO									
										ALTN. NO									
										DATE									
										DRAWN									
										CHECKED									
										PASSED									
										PROCESS SPEC. NO.									
										PART NO									
										RT.003.E39									
RT.003.E39 SUPPORT ANGLE M.S. 133 RT3/4 RV4216.																			
PART NO DESCRIPTION MTL SPEC. NO PER ASSY. RT.8 AFTER MOD 298 RT.314 EI BEFORE BE 216																			
⊕ MACHINED ALL OVER LIMITS TO NEWALL STANDARDS B FOR HOLES P PUSH FIT X RUNNING FIT DIMENSIONS WITHOUT LIMITS TO BE IN ACCORDANCE WITH L.P.T.B. DATA SHEET DSI RT.8 BEFORE MOD 298 RT.003.EI																			
f MACHINED F FORCE FIT D DRIVING FIT Y " " TYPE ASSD.ON TYPE ASSD.ON																			
g GROUND																			
										ALL PARTS MUST BEAR OUR PART NO. DATE LETTER & MAKERS' TRADE MARK									



DRAWING NOT TO BE SCALED



10 SWG

40

ALTERATIONS

ISSUE 4  
6 HOLES 7/64  
DIA. ADDED.

ISSUE 5  
PROCESS SPEC. PT.6  
ADDED.

ISSUE 6  
RT. 465. E1 ADDED TO  
ASSD ON COLUMN,  
AFTER ADV. BE. 216.  
RT. 314. E1 MARKED  
BEFORE ADV. BE. 216.

										TITLE										FIXING PLATE.																																																																																																																																											
										ISSUE NO										PROCESS SPEC NO										PT.6																																																																																																																																	
										MOD NO										PART NO										R.T. 003.E.40.																																																																																																																																	
										DATE										ALL PARTS MUST BEAR OUR PART NO										DATE, LETTER AND MAKERS TRADE MARK																																																																																																																																	
										DRAWN																																																																																																																																																					
										CHECKED																																																																																																																																																					
										PASSED																																																																																																																																																					
										ISSUE NO																																																																																																																																																					
										MOD NO																																																																																																																																																					
										DATE																																																																																																																																																					
										DRAWN																																																																																																																																																					
										CHECKED																																																																																																																																																					
										PASSED																																																																																																																																																					
R.T. 003.E.40										FIXING PLATE.										M.S.										EN 2.										RTS AFTER										RT 465. E1																																																																																																													
PART NO										DESCRIPTION										MATL										SPEC.										NO PER										RTS AFTER										RT 314. E1.										BEFORE										ADV. BE. 216.																																																																															
										LIMITS TO NEWELL STANDARDS										DIMENSIONS WITHOUT										RT 3 BEFORE										RT. 003.E1.																																																																																																																							
										B FOR HOLES P PUSH FIT X RUNNING FIT										LIMITS TO BE IN										MOD. 298																																																																																																																																	
										F FORCE FIT D DRIVING FIT Y " "										ACCORDANCE WITH L.T.E.																																																																																																																																											
																				DATA SHEET D.S.I.																																																																																																																																											

4 HOLES  $\frac{17}{64}$  DIA. FOR  $\frac{1}{4}$  RIVETS - JIG DRILL



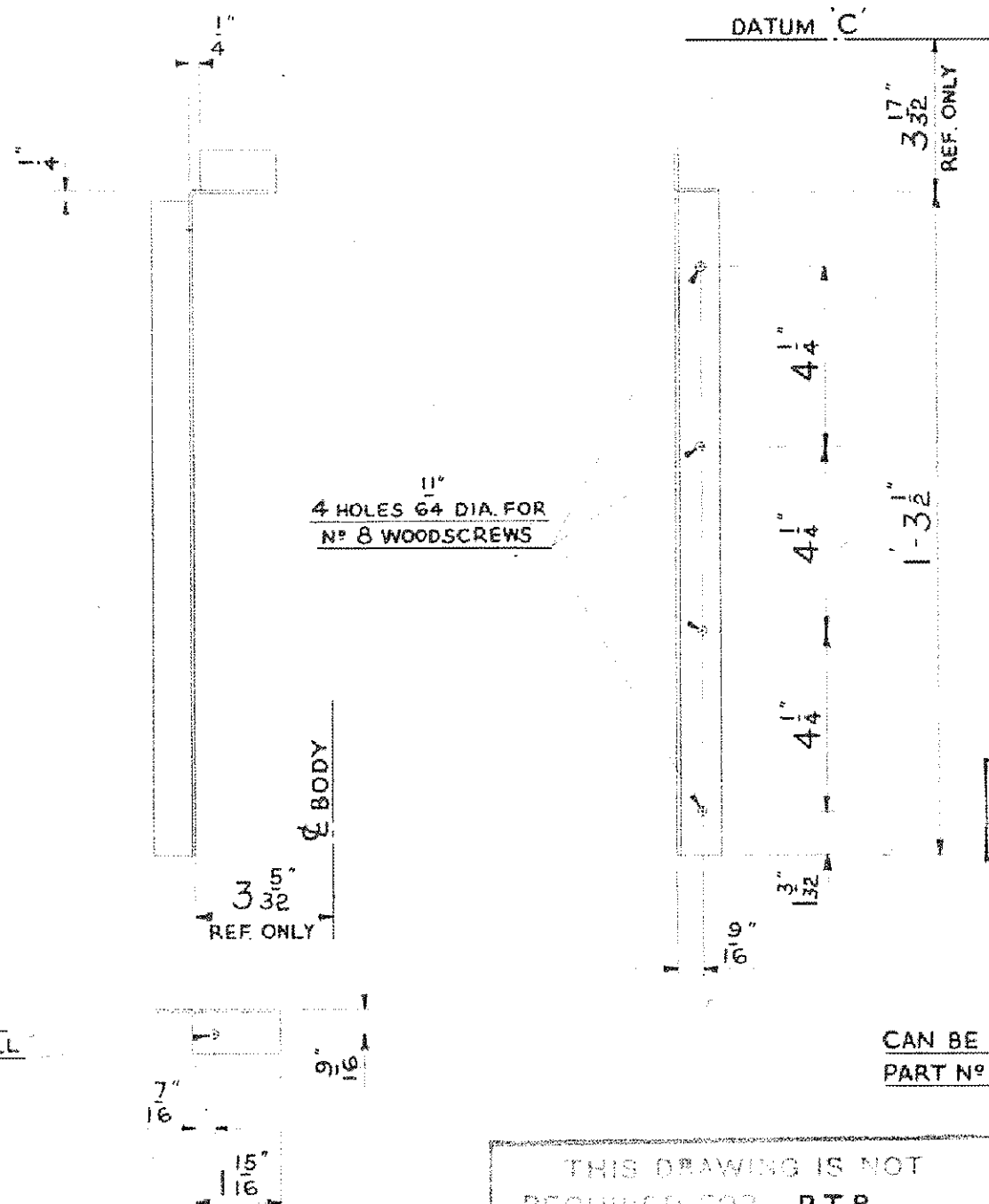
N/S. AS DRAWN  
14 B.G.

O/S OPPOSITE HAND.

ISSUE 6  
PROCESS SPEC  
NO WAS PT6A  
RSTC MIN NO 653-2-29

										TITLE									
										CONNECTING ANGLE.									
										ISSUE NO									
										MOD NO									
										DATE									
										DRAWN									
										CHECKED									
										PASSED									
										ISSUE NO									
										MOD NO									
										DATE									
										DRAWN									
										CHECKED									
										PASSED									
										PROCESS SPEC NO									
										P.T.6									
										PART NO									
										RT.003E 46.									
										RT.003E 47.									
										ALL PARTS MUST BEAR OUR PART NO									
										DATE LETTER AND MAKERS TRADE MARK									

DRAWING NOT TO BE SCALED



13" HOLE 64 DIA. FOR 2 BA BOLT-JIG DRILL

4 HOLES 1 1/4" DIA. FOR N° 8 WOODSCREWS

THIS DRAWING IS NOT REQUIRED WHEN ALT ADV N° BE 216 IS EMBODIED.

CAN BE MADE FROM PART N° RT.003.E39

50

MADE FROM SECTION 2171-70

THIS DRAWING IS NOT REQUIRED FOR RT.8 WHEN MOD 298 IS EMBODIED.

THIS DRAWING IS REQUIRED FOR RT.8 WHEN MOD. 396 IS EMBODIED.

TITLE SUPPORT ANGLE - ENGINE SHIELD

ISSUE N°	1	2	3
MOD N°	396	298	BE 216
DATE	1-8-51	2-8-51	10-8-54
DRAWN	L.M.	L.M.	F.S.
CHECKED	A.H.	A.H.	A.H.
PASSED	A.H.	A.H.	A.H.
ISSUE N°			
MOD N°			
DATE			
DRAWN			
CHECKED			
PASSED			

PROCESS SPEC N°

PART N°  
RT.003.E50

ALL PARTS MUST BEAR OUR PART N°  
DATE LETTER AND MAKERS TRADE MARK

RT.003.E50 SUPPORT ANGLE

PART N°

DESCRIPTION

MATL SPEC.

N° PER ASSY.

⊕ MACHINED ALL OVER  
/ MACHINED GROUND

LIMITS TO NEWALL STANDARDS  
B FOR HOLES P PUSH FIT X RUNNING FIT  
F FORCE FIT D DRIVING FIT Y " "

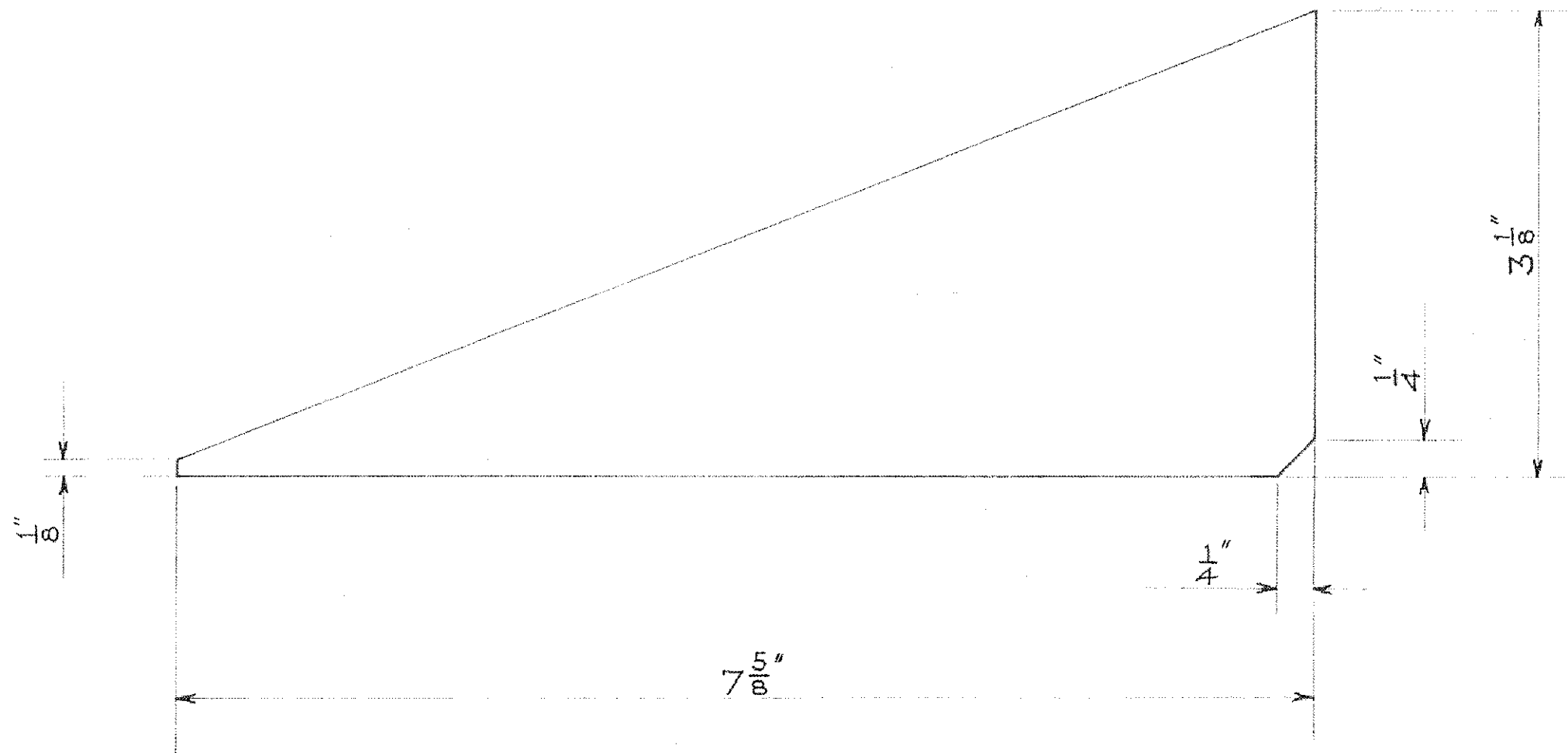
DIMENSIONS WITHOUT LIMITS TO BE IN ACCORDANCE WITH L.T.E. DATA SHEET D.S.1

RT.8 RT.003.E1 SMT4

TYPE ASSD.ON

TYPE ASSD.ON

DRAWING NOT TO BE SCALED



ADV BE159 RT3

THIS DRAWING IS NOT REQUIRED WHEN  
ALT ADVICE NO BE216 IS EMBODIED.

16 B.G.  
(.0625") 5.5

ALTERATIONS  
ADVICE BE 159  
ISSUE 2  
NOTE ADDED,  
"THIS DRG IS NOT  
REQD ETC"

RT 003 E55				PACKING PIECE				STEEL 133				LIMITS TO NEWALL STANDARDS				DIMENSIONS WITHOUT LIMITS TO BE IN ACCORDANCE WITH L.T.E. DATA SHEET D.S.1.				RT3 RT003E1 SHT 6				TYPE ASSD.ON TYPE ASSD.ON				TITLE PACKING PIECE FOR BULKHEAD BOTTOM REINFORCING PLATE				ISSUE NO 1 2				MOD NO BE159 BE216				DATE 17-2-52 22-5-56				DRAWN JCG F.S.				CHECKED X.V.B.				PASSED				ISSUE NO				MOD NO				DATE				DRAWN				CHECKED				PASSED				PROCESS SPEC NO P.T.6.				PART NO RT 003 E55				ALL PARTS MUST BEAR OUR PART NO DATE LETTER AND MAKERS TRADE MARK			
RT 003 E55				PACKING PIECE				STEEL 133				LIMITS TO NEWALL STANDARDS				DIMENSIONS WITHOUT LIMITS TO BE IN ACCORDANCE WITH L.T.E. DATA SHEET D.S.1.				RT3 RT003E1 SHT 6				TYPE ASSD.ON TYPE ASSD.ON				TITLE PACKING PIECE FOR BULKHEAD BOTTOM REINFORCING PLATE				ISSUE NO 1 2				MOD NO BE159 BE216				DATE 17-2-52 22-5-56				DRAWN JCG F.S.				CHECKED X.V.B.				PASSED				ISSUE NO				MOD NO				DATE				DRAWN				CHECKED				PASSED				PROCESS SPEC NO P.T.6.				PART NO RT 003 E55				ALL PARTS MUST BEAR OUR PART NO DATE LETTER AND MAKERS TRADE MARK			
PART NO				DESCRIPTION				MATERIAL SPEC.				LIMITS TO NEWALL STANDARDS				DIMENSIONS WITHOUT LIMITS TO BE IN ACCORDANCE WITH L.T.E. DATA SHEET D.S.1.				RT3 RT003E1 SHT 6				TYPE ASSD.ON TYPE ASSD.ON				TITLE PACKING PIECE FOR BULKHEAD BOTTOM REINFORCING PLATE				ISSUE NO 1 2				MOD NO BE159 BE216				DATE 17-2-52 22-5-56				DRAWN JCG F.S.				CHECKED X.V.B.				PASSED				ISSUE NO				MOD NO				DATE				DRAWN				CHECKED				PASSED				PROCESS SPEC NO P.T.6.				PART NO RT 003 E55				ALL PARTS MUST BEAR OUR PART NO DATE LETTER AND MAKERS TRADE MARK			
MACHINED ALL OVER MACHINED GROUND				LIMITS TO NEWALL STANDARDS				DIMENSIONS WITHOUT LIMITS TO BE IN ACCORDANCE WITH L.T.E. DATA SHEET D.S.1.				LIMITS TO NEWALL STANDARDS				DIMENSIONS WITHOUT LIMITS TO BE IN ACCORDANCE WITH L.T.E. DATA SHEET D.S.1.				RT3 RT003E1 SHT 6				TYPE ASSD.ON TYPE ASSD.ON				TITLE PACKING PIECE FOR BULKHEAD BOTTOM REINFORCING PLATE				ISSUE NO 1 2				MOD NO BE159 BE216				DATE 17-2-52 22-5-56				DRAWN JCG F.S.				CHECKED X.V.B.				PASSED				ISSUE NO				MOD NO				DATE				DRAWN				CHECKED				PASSED				PROCESS SPEC NO P.T.6.				PART NO RT 003 E55				ALL PARTS MUST BEAR OUR PART NO DATE LETTER AND MAKERS TRADE MARK			



7'-4" LINE - O.S.



THIS DRAWING IS NOT  
REQUIRED FOR RT. 8  
WHEN MOD. 396 IS EMPLOYED

ISSUE 8  
PART RT.017 E2.  
NOW DETAILED ON  
SEPARATE DRAWING  
ISSUE 9.  
NOTE - 'NOT REQ'D'  
ETC. ADDED.

[illegible]



Technical drawing of a mechanical part, likely a bracket or plate, showing dimensions and specifications.

**Dimensions:**

- Overall width:  $4\frac{1}{2}"$
- Overall height:  $4"$
- Top horizontal segments:  $4\frac{1}{32}"$ ,  $3\frac{7}{8}"$
- Top vertical segments:  $3\frac{11}{32}"$ ,  $2\frac{3}{4}"$ ,  $2\frac{1}{8}"$
- Bottom horizontal segments:  $2\frac{13}{16}"$ ,  $2\frac{21}{32}"$ ,  $2\frac{3}{4}"$ ,  $2\frac{3}{4}"$
- Bottom vertical segments:  $2\frac{1}{2}"$ ,  $1\frac{9}{32}"$ ,  $2\frac{3}{4}"$ ,  $3\frac{11}{32}"$
- Internal horizontal segments:  $2\frac{1}{16}"$ ,  $2\frac{1}{4}"$
- Internal vertical segments:  $2\frac{1}{2}"$ ,  $2\frac{1}{4}"$
- Radius:  $7\frac{1}{8}" R.$
- Central hole diameter:  $2\frac{17}{64}"$  DIA. HOLE
- Bottom edge hole diameter:  $3\frac{5}{64}"$

**Specifications:**

- 10 HOLES  $\frac{13}{64}"$  DIA. FOR  $\frac{1}{8}"$  DIA. RIVETS. JIG DRILL.
- 2 HOLES  $\frac{17}{64}"$  DIA. FOR  $\frac{1}{4}"$  DIA. BOLTS. JIG DRILL.

**Notes:**

- THIS DRAWING IS NOT REQUIRED WHEN MOD 542
- THIS DRAWING IS NOT REQUIRED WHEN MOD 542
- THIS DRAWING IS NOT REQUIRED WHEN MOD 542

THIS DRAWING IS NOT REQUIRED  
WHEN ALT ADV BE216 IS EMBODIED

THIS DRAWING IS  
REQUIRED FOR RT. 8  
WHEN MOD. 298 IS EMBODIED

THIS DRAWING IS NOT  
REQUIRED FOR RT 8  
WHEN MOD 396 IS EMBODIED

14 B.G.  
(.0785")

3

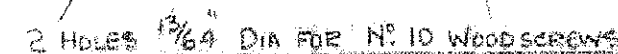
NOTE ADDED,  
"THIS DRG IS NOT  
REQD ETC"  
ADV BE2IG.

																																																																																																																																																																																																																																																																																																																																																																																																																																																																																																																																																																																																																																																																																																																																																																																																																																																																																																																																																																																																																																																																																																																																																																																																																																																																																																																																																																																																																																																								</
--	--	--	--	--	--	--	--	--	--	--	--	--	--	--	--	--	--	--	--	--	--	--	--	--	--	--	--	--	--	--	--	--	--	--	--	--	--	--	--	--	--	--	--	--	--	--	--	--	--	--	--	--	--	--	--	--	--	--	--	--	--	--	--	--	--	--	--	--	--	--	--	--	--	--	--	--	--	--	--	--	--	--	--	--	--	--	--	--	--	--	--	--	--	--	--	--	--	--	--	--	--	--	--	--	--	--	--	--	--	--	--	--	--	--	--	--	--	--	--	--	--	--	--	--	--	--	--	--	--	--	--	--	--	--	--	--	--	--	--	--	--	--	--	--	--	--	--	--	--	--	--	--	--	--	--	--	--	--	--	--	--	--	--	--	--	--	--	--	--	--	--	--	--	--	--	--	--	--	--	--	--	--	--	--	--	--	--	--	--	--	--	--	--	--	--	--	--	--	--	--	--	--	--	--	--	--	--	--	--	--	--	--	--	--	--	--	--	--	--	--	--	--	--	--	--	--	--	--	--	--	--	--	--	--	--	--	--	--	--	--	--	--	--	--	--	--	--	--	--	--	--	--	--	--	--	--	--	--	--	--	--	--	--	--	--	--	--	--	--	--	--	--	--	--	--	--	--	--	--	--	--	--	--	--	--	--	--	--	--	--	--	--	--	--	--	--	--	--	--	--	--	--	--	--	--	--	--	--	--	--	--	--	--	--	--	--	--	--	--	--	--	--	--	--	--	--	--	--	--	--	--	--	--	--	--	--	--	--	--	--	--	--	--	--	--	--	--	--	--	--	--	--	--	--	--	--	--	--	--	--	--	--	--	--	--	--	--	--	--	--	--	--	--	--	--	--	--	--	--	--	--	--	--	--	--	--	--	--	--	--	--	--	--	--	--	--	--	--	--	--	--	--	--	--	--	--	--	--	--	--	--	--	--	--	--	--	--	--	--	--	--	--	--	--	--	--	--	--	--	--	--	--	--	--	--	--	--	--	--	--	--	--	--	--	--	--	--	--	--	--	--	--	--	--	--	--	--	--	--	--	--	--	--	--	--	--	--	--	--	--	--	--	--	--	--	--	--	--	--	--	--	--	--	--	--	--	--	--	--	--	--	--	--	--	--	--	--	--	--	--	--	--	--	--	--	--	--	--	--	--	--	--	--	--	--	--	--	--	--	--	--	--	--	--	--	--	--	--	--	--	--	--	--	--	--	--	--	--	--	--	--	--	--	--	--	--	--	--	--	--	--	--	--	--	--	--	--	--	--	--	--	--	--	--	--	--	--	--	--	--	--	--	--	--	--	--	--	--	--	--	--	--	--	--	--	--	--	--	--	--	--	--	--	--	--	--	--	--	--	--	--	--	--	--	--	--	--	--	--	--	--	--	--	--	--	--	--	--	--	--	--	--	--	--	--	--	--	--	--	--	--	--	--	--	--	--	--	--	--	--	--	--	--	--	--	--	--	--	--	--	--	--	--	--	--	--	--	--	--	--	--	--	--	--	--	--	--	--	--	--	--	--	--	--	--	--	--	--	--	--	--	--	--	--	--	--	--	--	--	--	--	--	--	--	--	--	--	--	--	--	--	--	--	--	--	--	--	--	--	--	--	--	--	--	--	--	--	--	--	--	--	--	--	--	--	--	--	--	--	--	--	--	--	--	--	--	--	--	--	--	--	--	--	--	--	--	--	--	--	--	--	--	--	--	--	--	--	--	--	--	--	--	--	--	--	--	--	--	--	--	--	--	--	--	--	--	--	--	--	--	--	--	--	--	--	--	--	--	--	--	--	--	--	--	--	--	--	--	--	--	--	--	--	--	--	--	--	--	--	--	--	--	--	--	--	--	--	--	--	--	--	--	--	--	--	--	--	--	--	--	--	--	--	--	--	--	--	--	--	--	--	--	--	--	--	--	--	--	--	--	--	--	--	--	--	--	--	--	--	--	--	--	--	--	--	--	--	--	--	--	--	--	--	--	--	--	--	--	--	--	--	--	--	--	--	--	--	--	--	--	--	--	--	--	--	--	--	--	--	--	--	--	--	--	--	--	--	--	--	--	--	--	--	--	--	--	--	--	--	--	--	--	--	--	--	--	--	--	--	--	--	--	--	--	--	--	--	--	--	--	--	--	--	--	--	--	--	--	--	--	--	--	--	--	--	--	--	--	--	--	--	--	--	--	--	--	--	--	--	--	--	--	--	--	--	--	--	--	--	--	--	--	--	--	--	--	--	--	--	--	--	--	--	--	--	--	--	--	--	--	--	--	--	--	--	--	--	--	--	--	--	--	--	--	--	--	--	--	--	--	--	--	--	--	--	--	--	--	--	--	--	--	--	--	--	--	--	--	--	--	--	--	--	--	--	--	--	--	--	--	--	--	--	--	--	--	--	--	--	--	--	--	--	--	--	--	--	--	--	--	--	--	--	--	--	--	--	--	--	--	--	--	--	--	--	--	--	--	--	--	--	--	--	--	--	--	--	--	--	--	--	--	--	--	--	--	--	--	--	--	--	--	--	--	--	--	--	--	--	--	--	--	--	--	--	--	--	--	--	--	--	--	--	--	--	--	--	--	--	--	--	--	--	--	--	--	--	--	--	--	--	--	--	--	--	--	--	--	--	--	--	--	--	--	--	--	--	--	--	--	--	--	--	--	--	--	--	--	--	--	--	--	--	--	--	--	--	--	--	--	--	--	--	--	--	--	--	--	--	--	--	--	--	--	--	--	--	--	--	--	--	--	--	--	--	--	--	--	--	--	--	--	--	--	--	--	--	--	--	--	--	--	--	--	--	--	--	--	--	--	--	--	--	--	--	--	--	--	--	--	--	--	--	--	--	--	--	--	--	--	--	--	--	--	--	--	--	--	--	--	--	--	--	--	--	--	--	--	--	--	--	--	--	--	--	--	--	--	--	--	--	--	--	--	--	--	--	--	--	--	--	--	--	--	--	--	--	--	--	--	--	--	--	--	--	--	--	--	--	--	--	--	--	--	--	--	--	--	--	--	--	--	--	--	--	--	--	--	--	--	--	--	--	--	--	--	--	--	--	--	--	--	--	--	--	--	--	--	--	--	--	--	--	--	--	--	--	--	--	--	--	--	--	--	--	--	--	--	--	--	--	--	--	--	--	--	--	--	--	--	--	--	--	--	--	--	--	--	--	----



LAYOUT  
LAYOUT  
LAYOUT  
LAYOUT  
LAYOUT  
LAYOUT

5 1/4



ISSUE 2  
POSITION OF 2 HOLES  
ALTERED. 17/16 DIM'S  
WAS 3/4. 1 1/16 WAS  
3/8. 1 1/16 DIM'S  
WERE 2 3/8".  
PARTS 2 AND 3  
RAISED TO ISSUE 2

ISSUE 3  
DIMS: 1 5/16" WAS 2 3/16"  
FROM OTHER END.  
PT RT028.E3 NOW  
DETAILED ON SEPARATE DRG.  
NOTES & DIMS:  
APPERTAINING TO  
SAME DELETED.  
NOTE-SEE SEPARATE  
DRAWING" ADDED.  
GAUGE B.G WAS SWG.

ISSUE 4  
NOTE- BEFORE MOD 101  
ADDED TO RT029 E

ISSUE 5  
WAS TYPE RT3  
ASSD. RT01E1

N/S AS DRAWN

PT  
023 E

0/5 OPPOSITE HAND  
BEFORE MOD.101

RT  
029.8

[illegible]

TITLE						BRACKET ASSY.	
ISSUE NO	1	2	3	4	5	PROCESS SPEC. NO.	
ALTN. NO	1	MOD 1	MOD 1A	MOD 101	298		
DATE	6/9/48	13-1-47	7-6-48	7-6-48	29-10-51		
DRAWN	H.S.	L.M.	F.G.E.	F.G.E.	A.M.G.		
CHECKED	R.E.S.						
PASSED						PART NO. RT. 028 E1 RT. 029 E1	
ISSUE NO							
ALTN. NO							
DATE							
DRAWN							
CHECKED						ALL PARTS MUST BEAR OUR PART NO. DATE LETTER & MAKER'S TRADE MARK	
PASSED							

558/209/2131

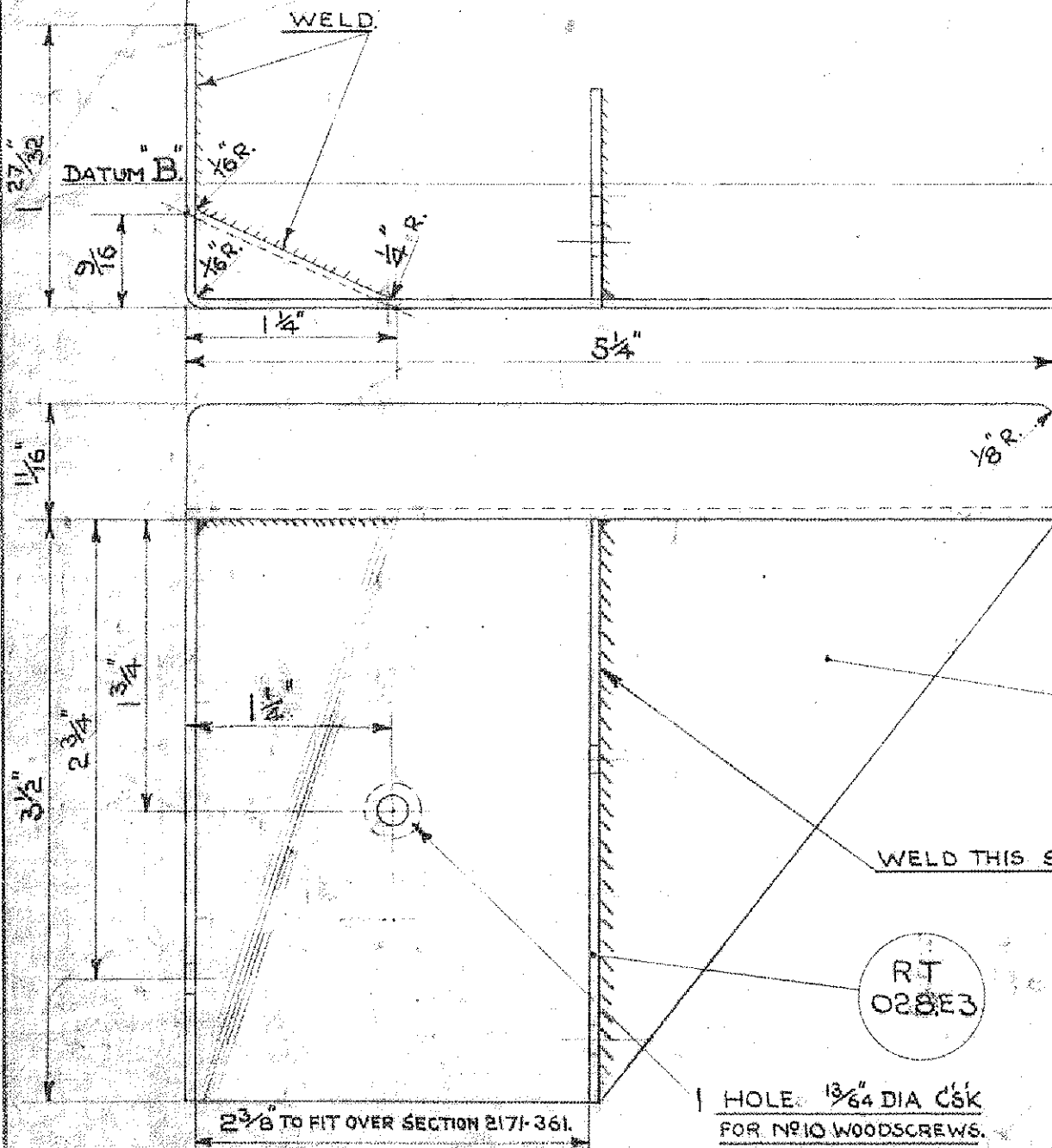
										TITLE										PLATE										BRACKET ASSY.																																							
										ISSUE NO										3										4																																							
										MOD NO										1A										101																																							
										DATE										7-6-48										7-6-48																																							
										DRAWN										F.G.E										F.G.E																																							
										CHECKED										J.S.										J.S.																																							
										PASSED										C.S.										C.S.																																							
										ISSUE NO																																																											
										MOD NO																																																											
										DATE																																																											
										DRAWN																																																											
										CHECKED																																																											
										PASSED																																																											
RT028.E3										PLATE										BRACKET ASSY.										M5										133																													
PART NO										DESCRIPTION										MTL										SPEC										NO PER ASSY																													
⊕ MACHINED										LIMITS TO NEWALL STANDARDS										DIMENSIONS WITHOUT										RT3 AFTER										RTI32.E1																													
⊗ ALL OVER										B FOR HOLES P PUSH FIT X RUNNING FIT										LIMITS TO BE IN										RT3 BEFORE										RT029.E1																													
⊘ MACHINED										F FOR FIT D DRIVING FIT Y " "										ACCORDANCE WITH L.T.E										MOD 101																																							
⊙ GROUND																				DATA SHEET D.S.1										RT3										RT028.E1																													
																														TYPE										ASS'D ON										TYPE										ASS'D ON									

ISSUE 3.  
PART WAS DETAILED  
ON ASSY. DRG.  
ISSUE 4.  
ASS'D ON RT132EI-  
AFTER MOD101 ADDED,  
8 RT029EI NOW-  
BEFORE MOD101 ADDED



DRAWING NOT TO BE SCALED

TO C BODY  
(REF. ONLY)



WELD THIS SIDE ONLY.

RT  
028E3

1 HOLE. 13/64" DIA C&K  
FOR NO 10 WOODSCREWS.

2

16 B.G.  
(.0625)

\* SEE SEPARATE DRAWING.

THIS DRAWING IS  
REQUIRED FOR RT3  
WHEN MOD. 101 IS EMBODIED.

1

ALTERATIONS

ISSUE 2  
WAS TYPE RT3  
ASSD. RT018.E1.

TITLE BRACKET ASSY. 9/s.

RT028.E3.	PLATE.	*	1
RT132.E2.	BRACKET.	M.S.	133
RT132.E1.	BRACKET ASSY. 0/s.		
PART NO	DESCRIPTION	MTL	SPEC.

⊕	MACHINED ALL OVER	LIMITS TO NEWELL STANDARDS
⊖	MACHINED GROUND	B FOR HOLES, P PUSH FIT, X RUNNING FIT F FORCE FIT, D DRIVING FIT

DIMENSIONS WITHOUT  
LIMITS TO BE IN  
ACCORDANCE WITH L.T.E.  
DATA SHEET D.S.1

RT3	RT018.E1.	TYPE	ASS'D ON	TYPE	ASS'D ON
-----	-----------	------	----------	------	----------

ISSUE NO	1	2
MOD NO	101	298
DATE	26.5.48	29.10.51
DRAWN	F.G.E.	A.H.G.
CHECKED	H.S.	H.S.
PASSED	H.S.	H.S.
ISSUE NO		
MOD NO		
DATE		
DRAWN		
CHECKED		
PASSED		

PROCESS SPEC NO	
PART NO	RT132.E1.
ALL PARTS MUST BEAR OUR PART NO DATE LETTER & MAKERS TRADE MARK	

2009 (2)

RT. 324. E3  
PART NO.  
⊕ MACHINE  
f ALL OVER  
G MACHINE  
GROUND

ISSUE 5  
"BE 159" ADDED  
TO ISSUES 3 & 4

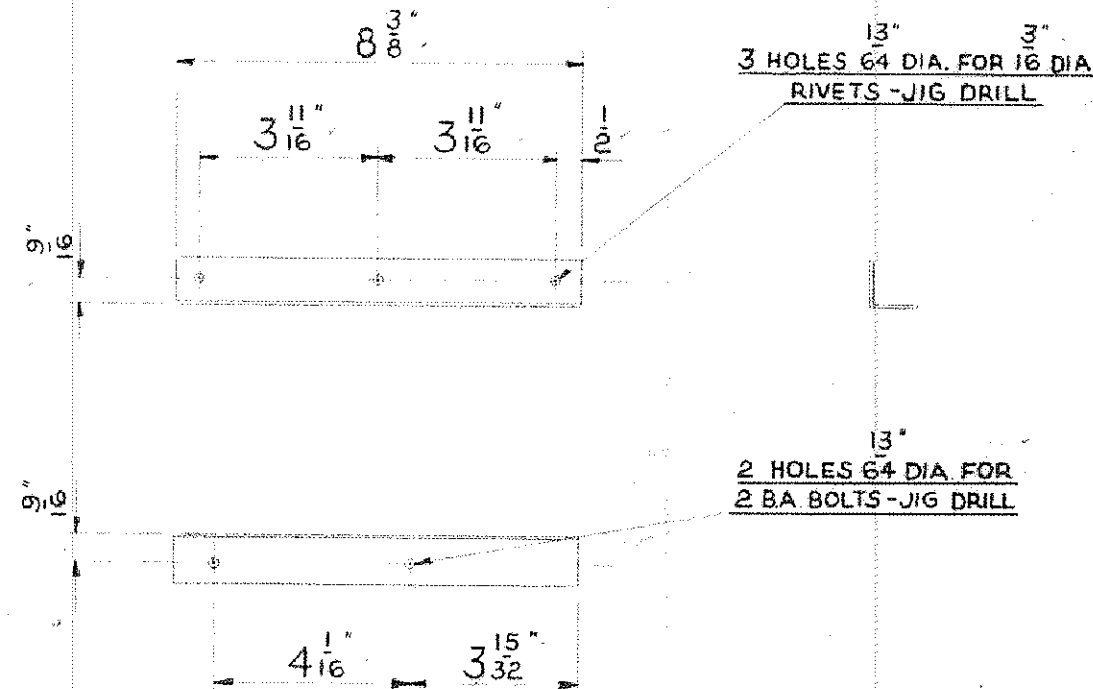


THIS DRAWING IS  
REQUIRED FOR RT.8  
WHEN MOD. 396 IS EMBODIED.

						TITLE SUPPORT ANGLE - ENGINE SHIELD & CAB FLOOR											
						ISSUE NO MOD. NO DATE DRAWN CHECKED PASSED ISSUE NO MOD. NO DATE DRAWN CHECKED PASSED					PROCESS SPEC. NO		PT.6				
						1 2 3 4 5 396 298 396 396 BE 159 1-8-51 2-8-51 28-8-51 8-11-51 29-2-52 JCG K.V.B.					PART NO		RT.324.E3				
RT.324.E3 SUPPORT ANGLE																	
PART NO		DESCRIPTION		MATL	SPEC.	NO PER ASSY.											
⊕ MACHINED ALL OVER MACHINED GROUND		LIMITS TO NEWALL STANDARDS		DIMENSIONS WITHOUT LIMITS TO BE IN ACCORDANCE WITH L.T.E. DATA SHEET D.S.I.		RT.6 RT.324.EI		TYPE ASSD.ON		TYPE ASSD.ON		ALL PARTS MUST BEAR OUR PART NO DATE LETTER AND MAKERS TRADE MARK					
B FOR HOLES P PUSH FIT X RUNNING FIT F FORCE FIT D DRIVING FIT Y " "																	



DRAWING NOT TO BE SCALED

CAN BE MADE FROM  
PART N° RT.003.E39

4

MADE FROM  
SECTION 2171-70THIS DRAWING IS NOT  
REQUIRED FOR RT.8  
WHEN MOD. 298 IS EMBODIED.THIS DRAWING IS  
REQUIRED FOR RT.8  
WHEN MOD. 396 IS EMBODIED.TITLE  
SUPPORT ANGLE - CAB FLOOR

RT.324.E4

SUPPORT ANGLE

PART N°

DESCRIPTION

MATL

SPEC.

NO PER  
ASSY.

RT.8

RT.324.EI

TYPE

ASSD.ON

TYPE

ASSD.ON

⊕ MACHINED  
ALL OVER  
MACHINED  
GROUND

LIMITS TO NEWALL STANDARDS  
B FOR HOLES P PUSH FIT X RUNNING FIT  
F FORCE FIT D DRIVING FIT Y " "

DIMENSIONS WITHOUT  
LIMITS TO BE IN  
ACCORDANCE WITH L.T.E.  
DATA SHEET D.S.I.

ISSUE N°

MOD. N°

DATE

DRAWN

CHECKED

PASSED

ISSUE N°

MOD. N°

DATE

DRAWN

CHECKED

PASSED

1

2

396

298

1.8.51

2.8.51

1.8.51

2.8.51

1.8.51

2.8.51

1.8.51

2.8.51

1.8.51

2.8.51

1.8.51

2.8.51

1.8.51

2.8.51

1.8.51

2.8.51

1.8.51

2.8.51

PROCESS SPEC. N°

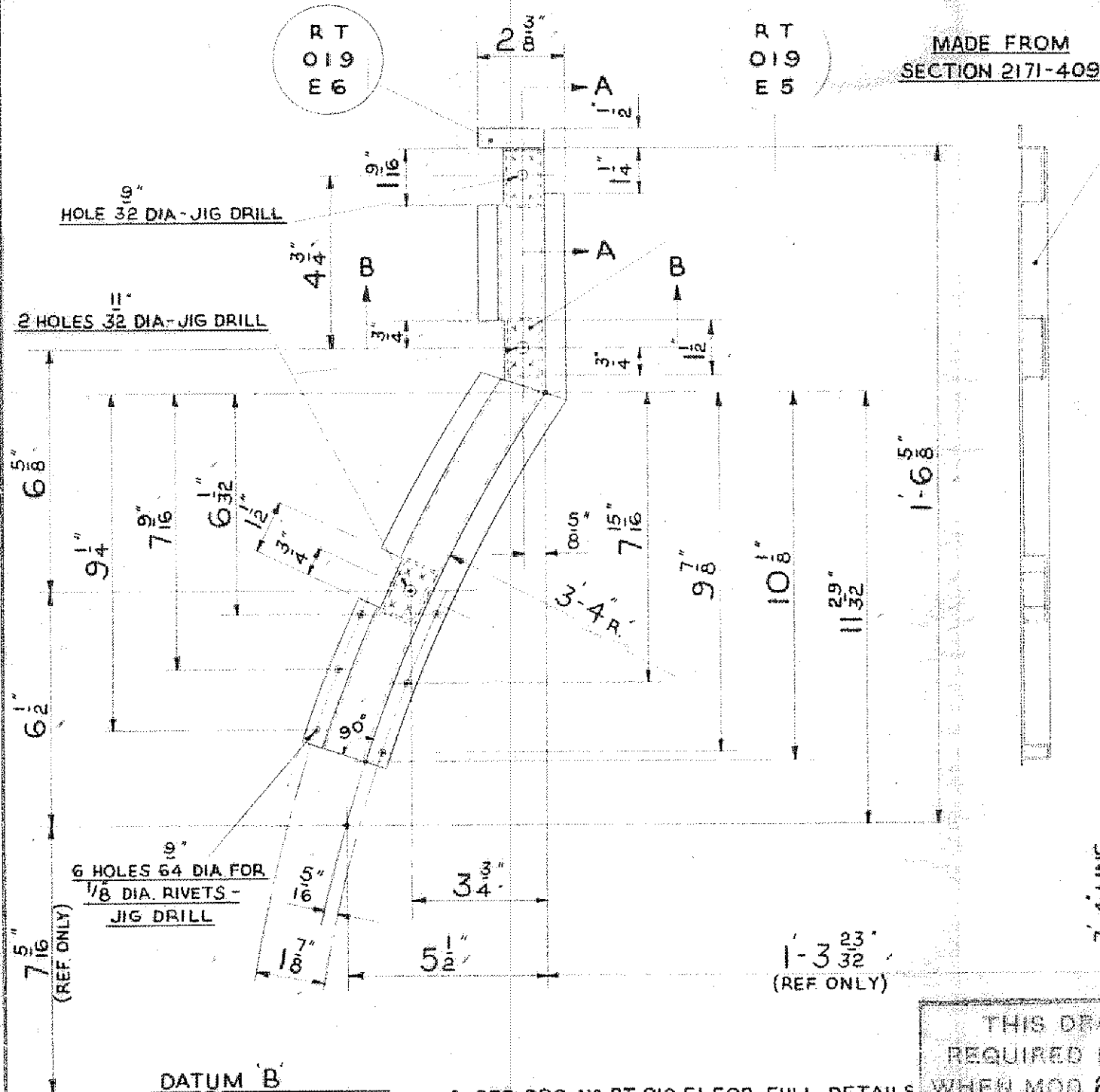
PT.6

PART N°

RT.324.E4

ALL PARTS MUST BEAR OUR PART N°  
DATE LETTER AND MAKERS TRADE MARK

DRAWING NOT TO BE SCALED



ALTERATIONS

ISSUE 2.  
NOTE RE. MOD. 298  
ADDED.

Δ SEE DRG. N° RT.019.EI FOR FULL DETAILS.

TITLE UPPER SUPPORT ASSY - N/S WING STRUCTURE

RT.019.E6	STIFFENER - TOP	Δ	1
RT.019.E5	STIFFENER	Δ	2
RT.325.E2	SUPPORT		1
RT.325.E1	UPPER SUPPORT ASSY.		

PART N°	DESCRIPTION	MATL. SPEC.	N° PER ASSY.
---------	-------------	-------------	--------------

⊕	MACHINED ALL OVER	LIMITS TO NEWALL STANDARDS	DIMENSIONS WITHOUT LIMITS TO BE IN ACCORDANCE WITH L.T.E. DATA SHEET D.S.1.
⊖	MACHINED GROUND	B FOR HOLES P PUSH FIT X RUNNING FIT	
G		F FORCE FIT D DRIVING FIT	

RT.8 RT.003.EI SHT.4

TYPE	ASSD.ON	TYPE	ASSD.ON
------	---------	------	---------

ISSUE N°	1	2
MOD. N°	396	298
DATE	31.7.51	2.8.51
DRAWN		
CHECKED		
PASSED		
ISSUE N°		
MOD. N°		
DATE		
DRAWN		
CHECKED		
PASSED		

PROCESS SPEC. N°

PART N°  
RT.325.EI

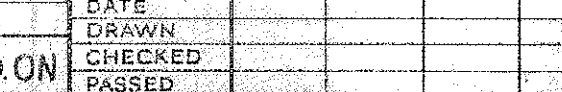
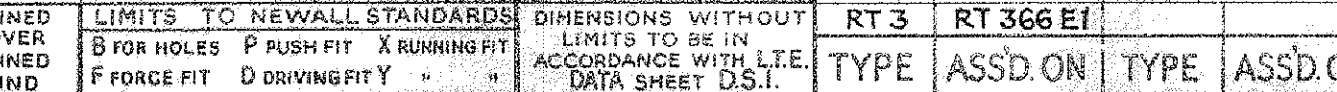
ALL PARTS MUST BEAR OUR PART N°  
DATE LETTER AND MAKERS TRADE MARK



ALL PARTS MUST BEAR OUR PART NO.  
DATE LETTER AND MAKER'S TRADE MARK.

NOTE - JIG DRILL  
ADDED TO 13 HOLES  
9/64 DIA. AT REQUEST  
OF PARK ROYAL.

359/2(3)

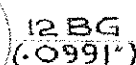



ST BEAR OUR PART NO  
ND MAKERS TRADE MARK

				TITLE CORNER SUPPORT for N/S WING STRUCTURE			
				ISSUE NO 1 MOD NO BE 159 DATE 12-12-51 DRAWN JCG CHECKED XVS PASSED ISSUE NO MOD NO DATE DRAWN CHECKED PASSED			
				PROCESS SPEC. NO P.T.6			
				PART NO			
				RT 366 E5			
				ALL PARTS MUST BEAR OUR PART NO DATE LETTER AND MAKERS TRADE MARK			
RT 366 E5	CORNER SUPPORT ~ N/S WING	M.S. 133					
PART NO	DESCRIPTION	MATL SPEC.	NO PER ASSY.				
⊕ MACHINED ALL OVER MACHINED GROUND	LIMITS TO NEWALL STANDARDS B FOR HOLES P PUSH FIT X RUNNING FIT F FORCE FIT D DRIVING FIT Y " "	DIMENSIONS WITHOUT LIMITS TO BE IN ACCORDANCE WITH L.T.E. DATA SHEET D.S.I.		RT 3	RT 366 E1	TYPE	ASSD. ON
				TYPE	ASSD. ON	TYPE	ASSD. ON



DRAWING NOT TO BE SCALED



TITLE PATCH PLATE ASSY - N/S

					TITLE PATCH PLATE ASSY - N/S																
RT 433 E4		PATCH PLATE PACKING		M.S.	110-01	1							ISSUE NO MOD. NO		1	2	3	4	PROCESS SPEC NO		PT 6
RT 433 E3		PATCH PLATE WEB		M.S.	110-01	2							DATE		27 1 54	16 6 54	6 4 55	11-5-55			
RT 433 E2		PATCH PLATE		M.S.	110-01	1							DRAWN		RCT	RCT	RCT	KYB			
RT 433 E1		PATCH PLATE ASSY - N/S											CHECKED		KYB	KYB	KYB	KYB			PART NO
PART NO		DESCRIPTION		MATL	SPEC.	NO PER ASSY.							PASSED								RT 433E1
⊕ MACHINED ALL OVER MACHINED GROUND		LIMITS TO NEWALL STANDARDS		DIMENSIONS WITHOUT LIMITS TO BE IN ACCORDANCE WITH L.T.E. DATA SHEET D.S.1.		RT 8		RT 440E1		TYPE		ASSD ON		TYPE		ASSD ON				ALL PARTS MUST BEAR OUR PART NO DATE LETTER AND MAKERS TRADE MARK	
		B FOR HOLES P PUSH FIT X RUNNING FIT																			
		F FORCE FIT D DRIVING FIT Y " "																			

# ALTERATIONS

ADVICE BE 159

ISSUE 2

2 HOLES  $\frac{1}{64}$  DIA

DIM 31/10/51
 REMOVED

DATE 3/28/72 DELT  
MURPHY, R. E. 100-100000

WIDTH OF FLANGE 6.00  
DIM 1 1/2" x 1/2" x 1/2"

1234 5 6 7 8 9 10 11 12 13 14 15 16 17 18 19 20 21 22 23 24 25 26 27 28 29 30 31 32 33 34 35 36 37 38 39 40 41 42 43 44 45 46 47 48 49 50 51 52 53 54 55 56 57 58 59 60 61 62 63 64 65 66 67 68 69 70 71 72 73 74 75 76 77 78 79 80 81 82 83 84 85 86 87 88 89 90 91 92 93 94 95 96 97 98 99 100 101 102 103 104 105 106 107 108 109 110 111 112 113 114 115 116 117 118 119 120 121 122 123 124 125 126 127 128 129 130 131 132 133 134 135 136 137 138 139 140 141 142 143 144 145 146 147 148 149 150 151 152 153 154 155 156 157 158 159 160 161 162 163 164 165 166 167 168 169 170 171 172 173 174 175 176 177 178 179 180 181 182 183 184 185 186 187 188 189 190 191 192 193 194 195 196 197 198 199 200 201 202 203 204 205 206 207 208 209 210 211 212 213 214 215 216 217 218 219 220 221 222 223 224 225 226 227 228 229 230 231 232 233 234 235 236 237 238 239 240 241 242 243 244 245 246 247 248 249 250 251 252 253 254 255 256 257 258 259 260 261 262 263 264 265 266 267 268 269 270 271 272 273 274 275 276 277 278 279 280 281 282 283 284 285 286 287 288 289 290 291 292 293 294 295 296 297 298 299 300 301 302 303 304 305 306 307 308 309 310 311 312 313 314 315 316 317 318 319 320 321 322 323 324 325 326 327 328 329 330 331 332 333 334 335 336 337 338 339 340 341 342 343 344 345 346 347 348 349 350 351 352 353 354 355 356 357 358 359 360 361 362 363 364 365 366 367 368 369 370 371 372 373 374 375 376 377 378 379 380 381 382 383 384 385 386 387 388 389 390 391 392 393 394 395 396 397 398 399 400 401 402 403 404 405 406 407 408 409 410 411 412 413 414 415 416 417 418 419 420 421 422 423 424 425 426 427 428 429 430 431 432 433 434 435 436 437 438 439 440 441 442 443 444 445 446 447 448 449 450 451 452 453 454 455 456 457 458 459 460 461 462 463 464 465 466 467 468 469 470 471 472 473 474 475 476 477 478 479 480 481 482 483 484 485 486 487 488 489 490 491 492 493 494 495 496 497 498 499 500 501 502 503 504 505 506 507 508 509 510 511 512 513 514 515 516 517 518 519 520 521 522 523 524 525 526 527 528 529 530 531 532 533 534 535 536 537 538 539 540 541 542 543 544 545 546 547 548 549 550 551 552 553 554 555 556 557 558 559 560 561 562 563 564 565 566 567 568 569 570 571 572 573 574 575 576 577 578 579 580 581 582 583 584 585 586 587 588 589 590 591 592 593 594 595 596 597 598 599 600 601 602 603 604 605 606 607 608 609 610 611 612 613 614 615 616 617 618 619 620 621 622 623 624 625 626 627 628 629 630 631 632 633 634 635 636 637 638 639 640 641 642 643 644 645 646 647 648 649 650 651 652 653 654 655 656 657 658 659 660 661 662 663 664 665 666 667 668 669 670 671 672 673 674 675 676 677 678 679 680 681 682 683 684 685 686 687 688 689 690 691 692 693 694 695 696 697 698 699 700 701 702 703 704 705 706 707 708 709 710 711 712 713 714 715 716 717 718 719 720 721 722 723 724 725 726 727 728 729 730 731 732 733 734 735 736 737 738 739 740 741 742 743 744 745 746 747 748 749 750 751 752 753 754 755 756 757 758 759 760 761 762 763 764 765 766 767 768 769 770 771 772 773 774 775 776 777 778 779 780 781 782 783 784 785 786 787 788 789 790 791 792 793 794 795 796 797 798 799 800 801 802 803 804 805 806 807 808 809 810 811 812 813 814 815 816 817 818 819 820 821 822 823 824 825 826 827 828 829 830 831 832 833 834 835 836 837 838 839 840 841 842 843 844 845 846 847 848 849 850 851 852 853 854 855 856 857 858 859 860 861 862 863 864 865 866 867 868 869 870 871 872 873 874 875 876 877 878 879 880 881 882 883 884 885 886 887 888 889 890 891 892 893 894 895 896 897 898 899 900 901 902 903 904 905 906 907 908 909 910 911 912 913 914 915 916 917 918 919 920 921 922 923 924 925 926 927 928 929 930 931 932 933 934 935 936 937 938 939 940 941 942 943 944 945 946 947 948 949 950 951 952 953 954 955 956 957 958 959 960 961 962 963 964 965 966 967 968 969 970 971 972 973 974 975 976 977 978 979 980 981 982 983 984 985 986 987 988 989 990 991 992 993 994 995 996 997 998 999 1000 1001 1002 1003 1004 1005 1006 1007 1008 1009 1010 1011 1012 1013 1014 1015 1016 1017 1018 1019 1020 1021 1022 1023 1024 1025 1026 1027 1028 1029 1030 1031 1032 1033 1034 1035 1036 1037 1038 1039 1040 1041

1 32 E 74  
100-1-105-1-2

ISSUE DATED TO 2  
ON PT/NP 2 3 64

ICEUT 2

ISSUE 3

DIMS 4 7/8, 1 1/4 W

5 1/8, 3/4"

Issue A

ISSUE 4

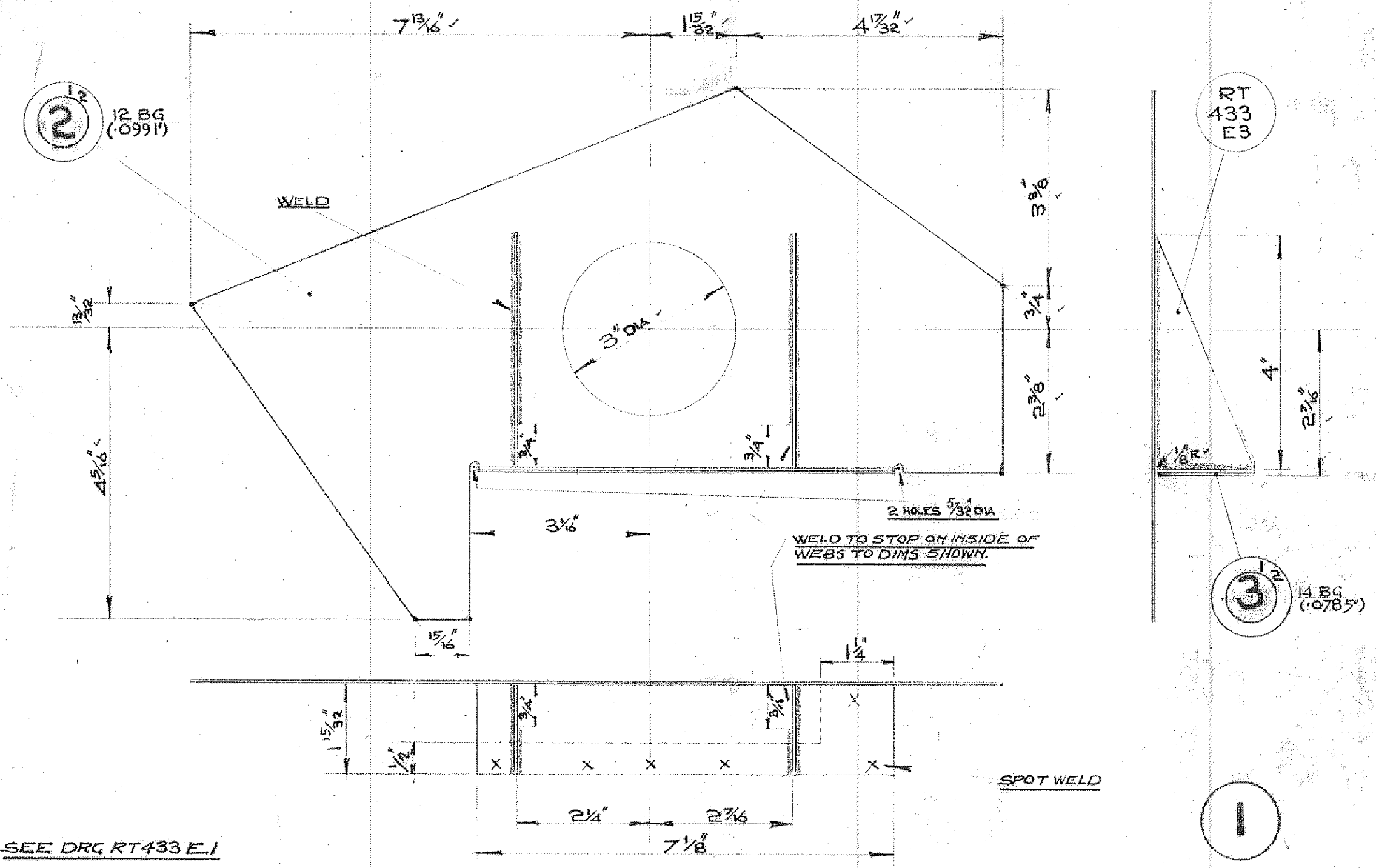
DIM. 1 7/8" WAS 2 1/8"

Nov. 11/2 "Answered"

**DIM. 716 ADDED**

DEPARTMENT OF THE CHIEF MECHANICAL ENGINEER (ROAD SERVICES)  
L.T.E. CHISWICK WORKS, LONDON, W.4

DRAWING NOT TO BE SCALED



Δ SEE DRG RT433 E.1

REMOVE SHARP EDGES

PART NO	DESCRIPTION	MATL	SPEC.	NO PER ASSY.
RT 434 E3	PATCH PLATE PACKING	M.S	110-01	1
RT 433 E3	PATCH PLATE WEB	Δ		2
RT 434 E2	PATCH PLATE	M.S	110-01	1
RT 434 E1	PATCH PLATE ASSY - 9/8			
⊕	MACHINED ALL OVER	LIMITS TO NEWELL STANDARDS B FOR HOLES P PUSH FIT X RUNNING FIT F FORCE FIT D DRIVING FIT " "		
f	MACHINED			
G	GROUND			
		DIMENSIONS WITHOUT LIMITS TO BE IN ACCORDANCE WITH L.T.E. DATA SHEET D.S.1.		
		RT 8	RT440E1	
		TYPE	ASSD.ON	TYPE ASSD.ON

TITLE					PROCESS SPEC NO	
PATCH PLATE ASSY - 9/8					PT 6	
ISSUE NO	1	2	3		PART NO	
MOD NO	1	2	3			
DATE	27.1.54	16.6.54	21.7.54		RT 434 E1	
DRAWN	RCT	RCT	KVB			
CHECKED	KVB	KVB	KVB		ALL PARTS MUST BEAR OUR PART NO DATE LETTER AND MAKERS TRADE MARK	
PASSED						
ISSUE NO						
MOD NO						
DATE						
DRAWN						
CHECKED						
PASSED						

ALTERATIONS

ADVICE BE 159

ISSUE 2

2 HOLES 1/4" DIA  
REMOVED,  
DIM 3 1/2" E 15/32" O.D. OF  
WIDTH OF FLANGE  
REDUCED  
DIMS 1 15/32" E 1/2" WERE  
1 13/32" E 3/4"  
ISSUE RAISED TO 2  
ON P/OP E.C.3

ISSUE 3

DIM 1/2" WAS 1/4"

309/2(3)  
(2000 1.31 - C15)